

LOC/DME I-VQX 110.75 Chan 44(Y)	APP CRS 274°	Rwy ldg TDZE Apt Elev 7500 667 680
--	------------------------	--

ILS or LOC RWY 28L

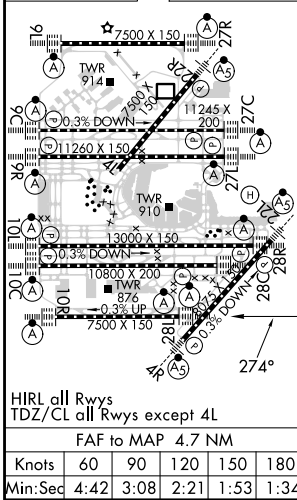
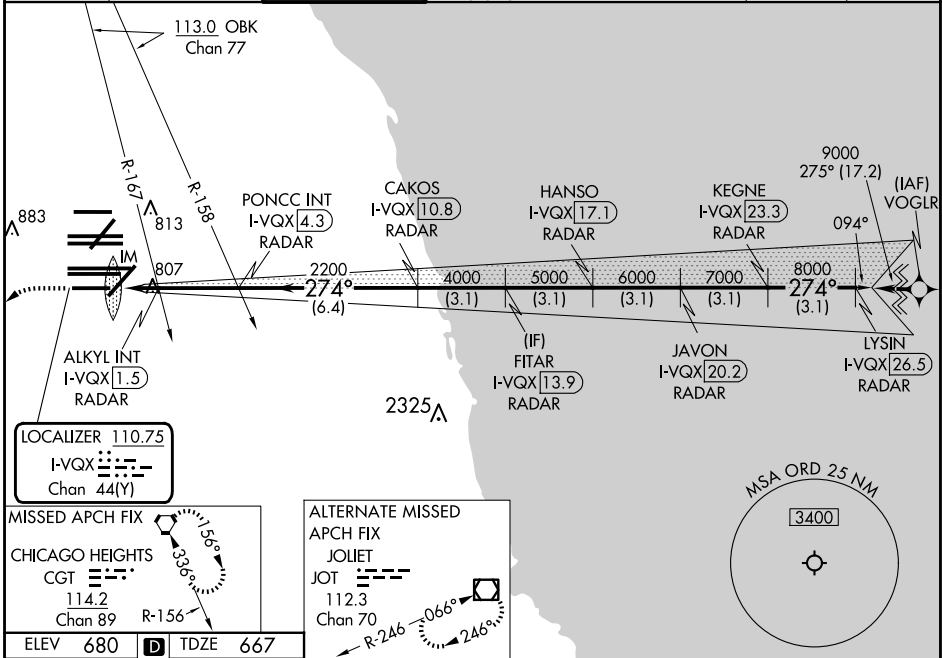
CHICAGO O'HARE INTL (ORD)

Aircraft not GPS equipped - RADAR required for procedure entry. DME or RADAR required.
From VOGLR: RNAV 1-GPS required.
Simultaneous approach authorized.



MISSED APPROACH: Climb to 1200 then climbing left turn to 4000 direct CGT VORTAC and hold.

D-ATIS 135.4 282.225	CHICAGO APP CON 119.0 292.125	O'HARE TOWER 133.0 348.0	GND CON (TWR NORTH) 124.125 (TWR SOUTH) 118.05 (ALL TWRS) 226.675	(TWR CENTER) 121.75 (OBND) (IBND) 121.9	CLNC DEL 121.6	CPDLC
--	---	------------------------------------	---	--	--------------------------	-------



ELEV 680	D	TDZE 667			
1200	4000	CGT			
*LOC only.					
I-VQX DME ANTENNA	ALSKY INT I-VQX RADAR	PONCC INT I-VQX RADAR	FITAR I-VQX RADAR	JAVON I-VQX RADAR	LYSIN I-VQX RADAR
0.3	0.8	4.3	13.9	20.2	26.5
0.2	0.9	0.7	2.9 NM	6.4 NM	3.1 NM
CATEGORY A					
S-ILS 28L 867/18 200 (200-½)					
S-LOC 28L 1240/24 573 (600-½)			1240-1¼ 573 (600-1¼)		
ALKYL FIX MINIMUMS (DUAL VOR RECEIVERS OR DME REQUIRED)					
S-LOC 28L 1060/24 393 (400-½)			1060/35 393 (400-⅝)		

EC-3, 20 FEB 2025 to 20 MAR 2025

EC-3, 20 FEB 2025 to 20 MAR 2025