

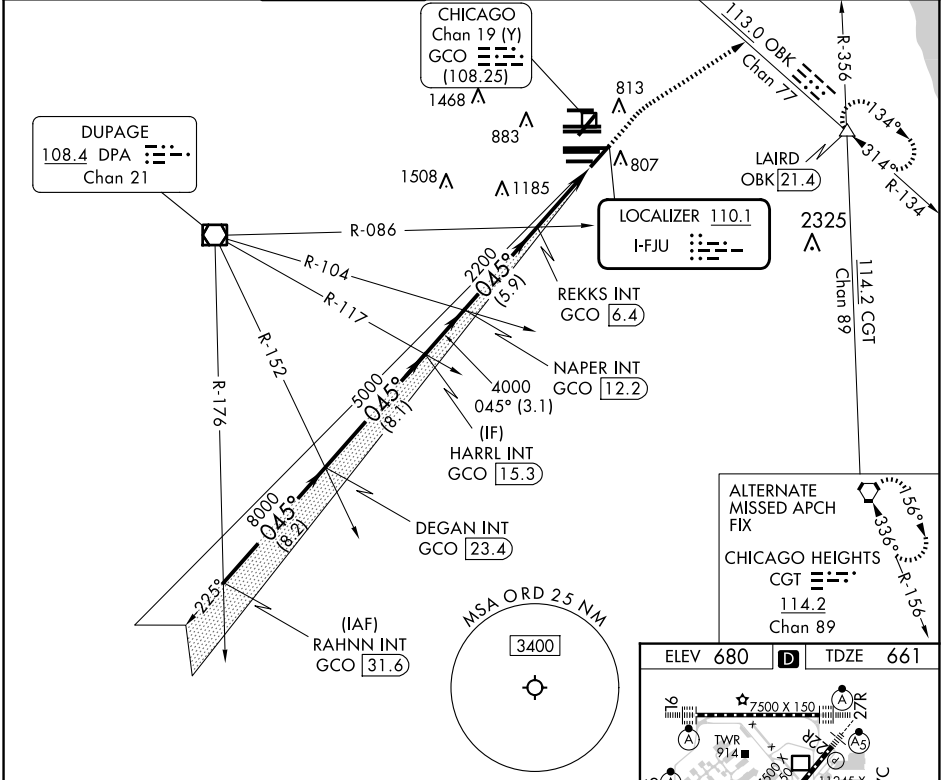
LOC I-FJU 110.1	APP CRS 045°	Rwy ldg TDZE Apt Elev 8075 661 680
---------------------------	------------------------	--

ILS or LOC RWY 4R

CHICAGO O'HARE INTL (ORD)

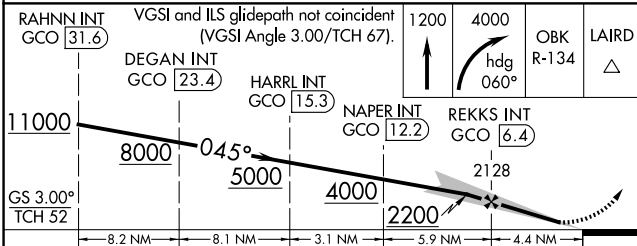
RADAR required for procedure entry.		MALSR	MISSED APPROACH: Climb to 1200 then climbing right turn to 4000 on heading 060° and OBK VOR/DME R-134 to LAIRD INT/OBK 21.4 DME and hold.	
-------------------------------------	--	-------	---	--

D-ATIS 135.4 282.225	CHICAGO APP CON 119.0 292.125	O'HARE TOWER 120.75 348.0	124.125 (TWR NORTH) 118.05 (TWR SOUTH) 226.675 (ALL TWRs)	GND CON (TWR CENTER) 121.75 (OBND) 121.9 (IBND)	CLNC DEL 121.6	CPDLC
--	---	-------------------------------------	--	---	--------------------------	-------



ALTERNATE MISSED APCH FIX

CHICAGO HEIGHTS CGT 114.2 Chan 89



ELEV 680	TDZE 661
----------	----------

HRL all Rwys
TDZ/CL all Rwys except 4L
FAF to MAP 4.4 NM

Knots	60	90	120	150	180
Min:Sec	4:24	2:56	2:12	1:46	1:28

CATEGORY	A	B	C	D
S-ILS 4R	861/18		200 (200-1/2)	
S-LOC 4R	1160/24 499 (500-1/2)		1160/50 499 (500-1)	
CIRCLING	1220-1 540 (600-1)		1220-1 1/2 540 (600-1 1/2) 1460-2 1/2 780 (800-2 1/2)	

EC-3, 20 FEB 2025 to 20 MAR 2025

EC-3, 20 FEB 2025 to 20 MAR 2025