

LOC/DME I-OYG 111.9 Chan 56	APP CRS 093°	Rwy Idg 11245 TDZE 673 Apt Elev 680
--	------------------------	--

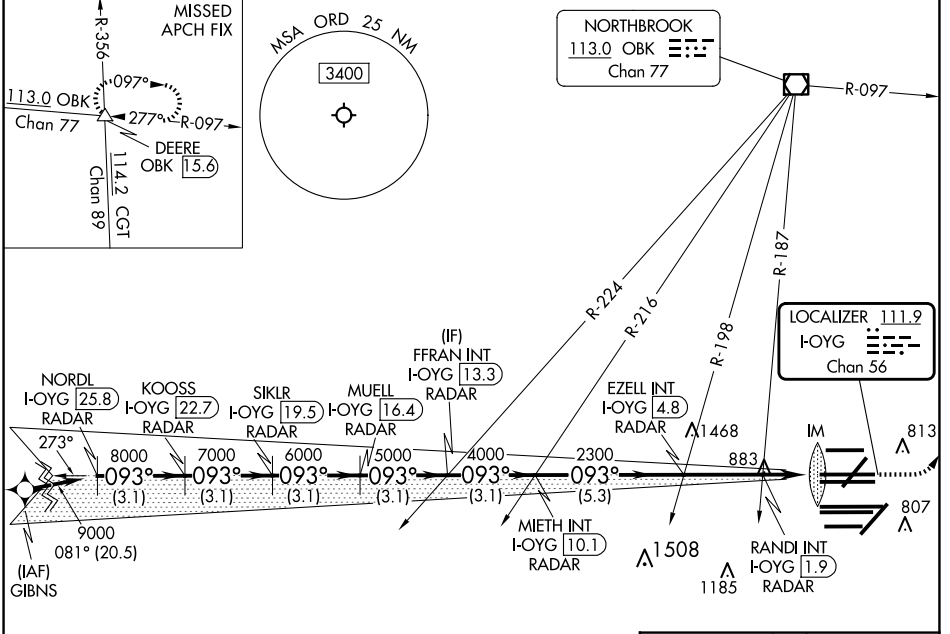
ILS or LOC RWY 9C

CHICAGO O'HARE INTL (ORD)

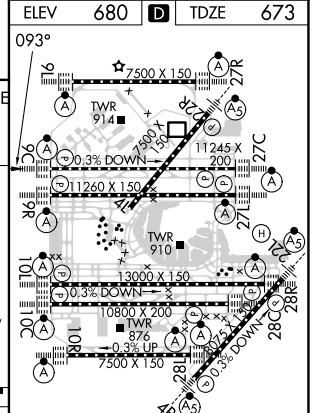
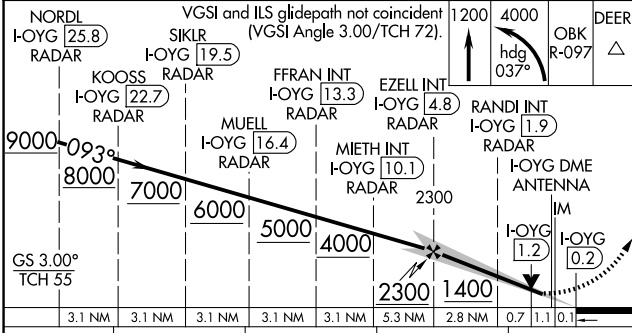
DME or RADAR required. From GIBNS: RNAV 1-GPS required. Aircraft not GPS equipped - RADAR required for procedure entry.
 Simultaneous approach authorized. For inop ALS, increase S-LOC 9C Cat C/D visibility to 1½ SM.

ALSF-2
 MISSED APPROACH: Climb to 1200 then climbing left turn to 4000 on heading 037° and OBK VOR/DME R-097 to DEERE INT/ OBK 15.6 DME and hold.

D-ATIS 135.4 282.225	CHICAGO APP CON 119.0 292.125	O'HARE TOWER 121.15 348.0	GND CON (TWR CENTER) 124.125 118.05 226.675 (ALL TWRs)	(TWR NORTH) 121.75 (OBND) 121.9 (IBND)	CLNC DEL 121.6	CPDLC
--	---	-------------------------------------	--	--	--------------------------	-------



NORDL I-OYG (25.8) RADAR	VGSI and ILS glidepath not coincident (VGSI Angle 3.00/TCH 72).	1200	4000	OBK R-097	DEERE
--------------------------	---	------	------	-----------	-------



CATEGORY	A	B	C	D
S-ILS 9C	873/18 200 (200-½)			
S-LOC 9C	1140/24	467 (500-½)	1140/50	467 (500-1)

HIRL all Rwys					
TDZ/CL all Rwys except 4L	FAF to MAP 4.9 NM				
Knots	60	90	120	150	180
Min:Sec	4:54	3:16	2:27	1:58	1:38

EC-3, 20 FEB 2025 to 20 MAR 2025

EC-3, 20 FEB 2025 to 20 MAR 2025