

CHICAGO, ILLINOIS

AL-166 (FAA)

ILS PRM RWY 10C (CAT II & III) (CLOSE PARALLEL)

CHICAGO O'HARE INTL (ORD)

LOC/DME I-SXH 108.95 Chan 26(Y)	APP CRS 093°	Rwy Ldg 10540 TDZE 669 Apt Elev 680
--	------------------------	--

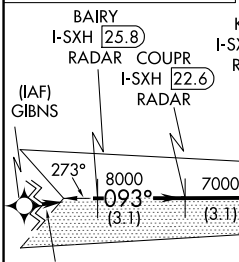
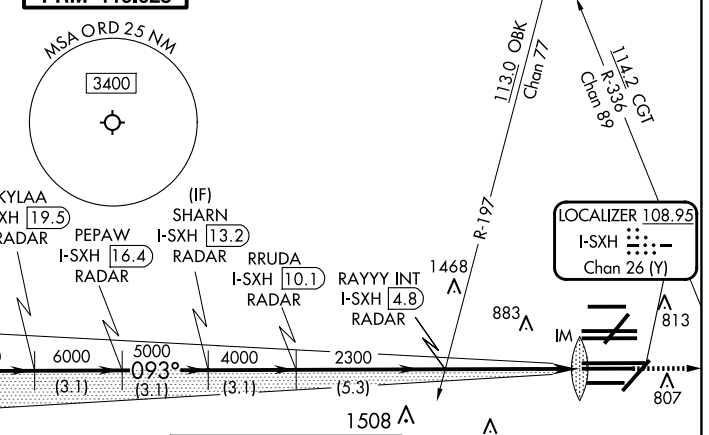
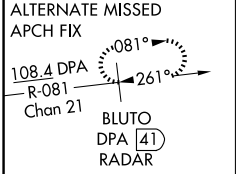
RNAV 1-GPS or RADAR required for procedure entry. DME or RADAR required.
From GIBNS: RNAV-1 GPS required.

▼ CAT II: RVR 1000 authorized with specific OPSPEC, MSPEC, or LOA approval and use of Autoland or HUD touchdown.
Simultaneous approach authorized. Use of FD or AP required during simultaneous operations. Dual VHF comm required. See additional requirements on AAUP.

ALSF-2

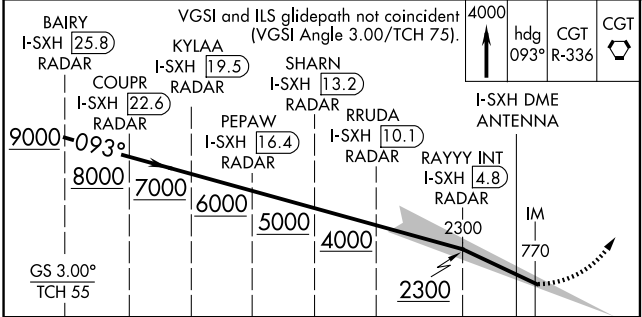
MISSED APPROACH: Climb to 4000 on heading 093° and CGT VORTAC R-336 to CGT VORTAC and hold.

D-ATIS 135.4 282.225	CHICAGO APP CON 119.0 292.125	O'HARE TOWER 120.75 348.0 PRM 119.625	GND CON (TWR CENTER) 121.125 (TWR NORTH) 118.05 (TWR SOUTH) 226.675 (ALL TWRs)	(TWR CENTER) 121.75 (OBND) 121.9 (IBND)	CLNC DEL 121.6	CPDLC
--	---	---	--	---	--------------------------	-------



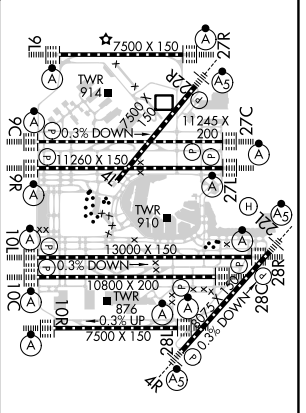
MISSED APCH FIX

CHICAGO HEIGHTS CGT **114.2** Chan 89



4000	hdg 093°	CGT R-336	CGT																																				
<table border="1"> <tr> <td>---</td> <td>3.1 NM</td> <td>3.1 NM</td> <td>3.1 NM</td> <td>3.1 NM</td> <td>3.1 NM</td> <td>5.3 NM</td> <td>5 NM</td> <td>1091'</td> </tr> <tr> <td>CATEGORY</td> <td colspan="2">A</td> <td colspan="2">B</td> <td colspan="2">C</td> <td colspan="2">D</td> </tr> <tr> <td>S-ILS 10C</td> <td colspan="8">CAT II RA 102/12 100 DA 769</td> </tr> <tr> <td>S-ILS 10C</td> <td colspan="8">CAT III RVR 06</td> </tr> </table>				---	3.1 NM	3.1 NM	3.1 NM	3.1 NM	3.1 NM	5.3 NM	5 NM	1091'	CATEGORY	A		B		C		D		S-ILS 10C	CAT II RA 102/12 100 DA 769								S-ILS 10C	CAT III RVR 06							
---	3.1 NM	3.1 NM	3.1 NM	3.1 NM	3.1 NM	5.3 NM	5 NM	1091'																															
CATEGORY	A		B		C		D																																
S-ILS 10C	CAT II RA 102/12 100 DA 769																																						
S-ILS 10C	CAT III RVR 06																																						

ELEV 680	D	TDZE 669
----------	----------	----------



HIRL all Rwys
TDZ/CL all Rwys except 4L

CATEGORY II and III ILS - SPECIAL AIRCREW & AIRCRAFT CERTIFICATION REQUIRED

CHICAGO, ILLINOIS
Amdt 1A 03JAN19

41°59'N-87°54'W

CHICAGO O'HARE INTL (ORD)

ILS PRM RWY 10C (CAT II & III) (CLOSE PARALLEL)

EC-3, 20 FEB 2025 to 20 MAR 2025

EC-3, 20 FEB 2025 to 20 MAR 2025