

# ILS PRM RWY 28C (CLOSE PARALLEL) CHICAGO O'HARE INTL (ORD)

|  |                        |  |
|--|------------------------|--|
| LOC/DME I-VZE<br><b>108.95</b><br>Chan <b>26 (Y)</b> | APP CRS<br><b>273°</b> | Rwy ldg <b>10800</b><br>TDZE <b>651</b><br>Apt Elev <b>680</b> |
|--|------------------------|--|

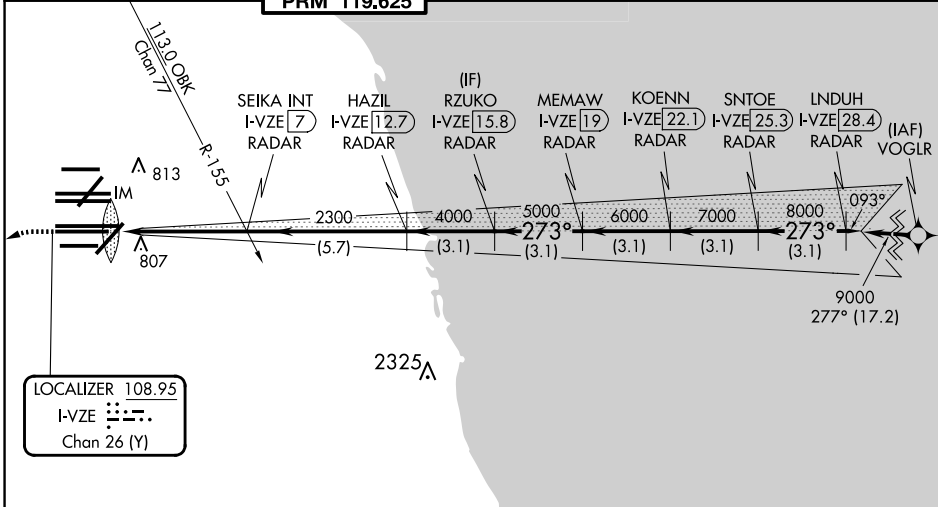
Aircraft not GPS equipped - RADAR required for procedure entry. DME or RADAR required.  
From VOGLR: RNAV 1-GPS required.

ALSF-2

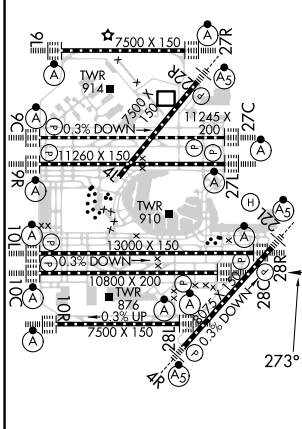
MISSED APPROACH: Climb to 1100 then climbing left turn to 4000 on heading 215° and DPA VOR/DME R-082 to DPA VOR/DME and hold.

Simultaneous approach authorized. Use of FD or AP required during simultaneous operations. Dual VHF comm required. See additional requirements on AAUP.

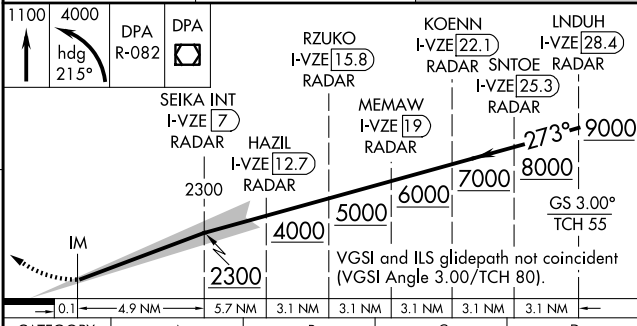
|  |   |   |   |   |                          |       |
|--|---|---|---|---|--------------------------|-------|
| D-ATIS<br><b>135.4</b><br><b>282.225</b> | CHICAGO APP CON<br><b>119.0 292.125</b> | O'HARE TOWER<br><b>120.75 348.0</b><br><b>PRM 119.625</b> | GND CON<br>(TWR NORTH) <b>124.125</b><br>(TWR SOUTH) <b>118.05</b><br><b>226.675</b> (ALL TWRS) | (TWR CENTER)<br>(OBND) <b>121.75</b><br>(IBND) <b>121.9</b> | CLNC DEL<br><b>121.6</b> | CPDLC |
|--|---|---|---|---|--------------------------|-------|



|                 |          |                 |
|-----------------|----------|-----------------|
| ELEV <b>680</b> | <b>D</b> | TDZE <b>651</b> |
|-----------------|----------|-----------------|



HIRL all Rwy's  
TDZ/CL all Rwy's except 4L



|           |                      |   |   |   |
|-----------|----------------------|---|---|---|
| CATEGORY  | A                    | B | C | D |
| S-ILS 28C | 851/18 200 (200-1/2) |   |   |   |

EC-3, 20 FEB 2025 to 20 MAR 2025

EC-3, 20 FEB 2025 to 20 MAR 2025