

# ILS PRM RWY 28C (SA CAT I)

(CLOSE PARALLEL)

CHICAGO O'HARE INTL (ORD)

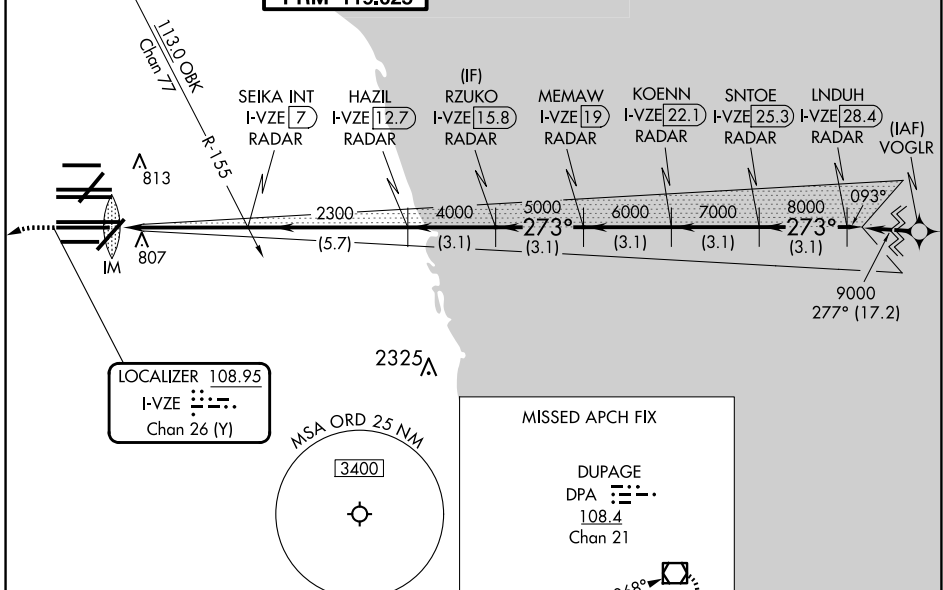
LOC/DME I-VZE <b>108.95</b> Chan <b>26 (Y)</b>	APP CRS <b>273°</b>	Rwy ldg <b>10800</b> TDZE <b>651</b> Apt Elev <b>680</b>
--	------------------------	--

Aircraft not GPS equipped - RADAR required for procedure entry.  
DME or RADAR required.  
From VOGLR: RNAV 1-GPS required.

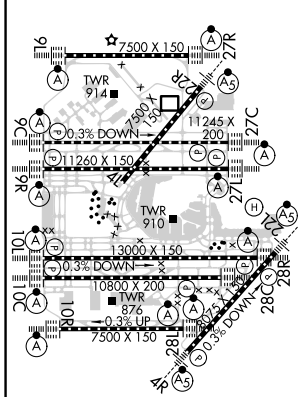
ALSF-2 	MISSED APPROACH: Climb to 1100 then climbing left turn to 4000 on heading 215° and DPA VOR/DME R-082 to DPA VOR/DME and hold.
------------	--

Simultaneous approach authorized. Use of FD or AP required during simultaneous operations. Dual VHF comm required. See additional requirements on AAUP.  
Requires specific OPSPEC, MSPEC, or LOA approval and use of HUD to DH.

D-ATIS <b>135.4</b> <b>282.225</b>	CHICAGO APP CON <b>119.0 292.125</b>	O'HARE TOWER <b>120.75 348.0</b> <b>PRM 119.625</b>	GND CON (TWR NORTH) <b>124.125</b> (TWR SOUTH) <b>118.05</b> <b>226.675</b> (ALL TWRS)	(TWR CENTER) <b>121.75</b> (OBND) <b>121.9</b> (IBND)	CLNC DEL <b>121.6</b>	CPDLC
--	---	---	---	---	--------------------------	-------



ELEV <b>680</b>	<b>D</b>	TDZE <b>651</b>
-----------------	----------	-----------------



1100	4000	DPA R-082	DPA	VGSI and ILS glidepath not coincident (VGSI Angle 3.00/TCH 80)
hdg 215°				
SEIKA INT I-VZE 7	HAZIL I-VZE 12.7	RZUKO I-VZE 15.8	MEMAW I-VZE 19	KOENN I-VZE 22.1
RADAR	RADAR	RADAR	RADAR	RADAR
2300	4000	5000	6000	7000
2300	2300	2300	2300	2300
1044'	5 NM	5.7 NM	3.1 NM	3.1 NM
3.1 NM	3.1 NM	3.1 NM	3.1 NM	3.1 NM
CATEGORY	A	B	C	D
S-ILS 28C	RA 155/14 150 DA 801			

**SA CATEGORY I ILS - SPECIAL AIRCREW & AIRCRAFT CERTIFICATION REQUIRED**

# ILS PRM RWY 28C (SA CAT I) (CLOSE PARALLEL)

EC-3, 20 FEB 2025 to 20 MAR 2025

EC-3, 20 FEB 2025 to 20 MAR 2025