

30NOV23

O'HARE EIGHT DEPARTURE

CHICAGO, ILLINOIS
CHICAGO O'HARE INTL (ORD)

**TOP ALTITUDE:
5000**

RADAR required.

SPECIAL INSTRUCTIONS: For appropriate departure control frequency, see graphic. Use frequency depicted within the sector where first navaid/fix for your route is located (sectors indicated by dashed lines; frequencies in dashed box within).

BADGER
116.4 BAE
Chan 111

NOTE: All turbo-jet departures in all directions, maintain 250K until advised by ATC.

CLNC DEL
121.6
CPDLC

CHICAGO DEP CON
WEST
126.625 327.075

CHICAGO DEP CON
EAST/NORTH
125.0 337.4

KEELER
116.6 ELX
Chan 113

IOWA CITY
116.2 IOW
Chan 109

DUPAGE
108.4 DPA
Chan 21

CHICAGO
Chan 19 (Y)
GCO
(108.25)

TAKEOFF MINIMUMS

- Rwy 22R: NA - ATC.
- Rwys 4L/R, 9L/C/R, 10L/C/R, 22L, 28C/R: Standard.
- Rwy 27L/C: Standard with minimum climb of 220' per NM to 1800.
- Rwy 27R: Standard with minimum climb of 220' per NM to 1700.
- Rwy 28L: Standard with minimum climb of 210' per NM to 900, or alternatively, with standard takeoff minimums and a normal 200' per NM climb gradient, takeoff must occur no later than 1300' prior to DER.

NOTE: Chart not to scale.

(CONTINUED ON FOLLOWING PAGE)

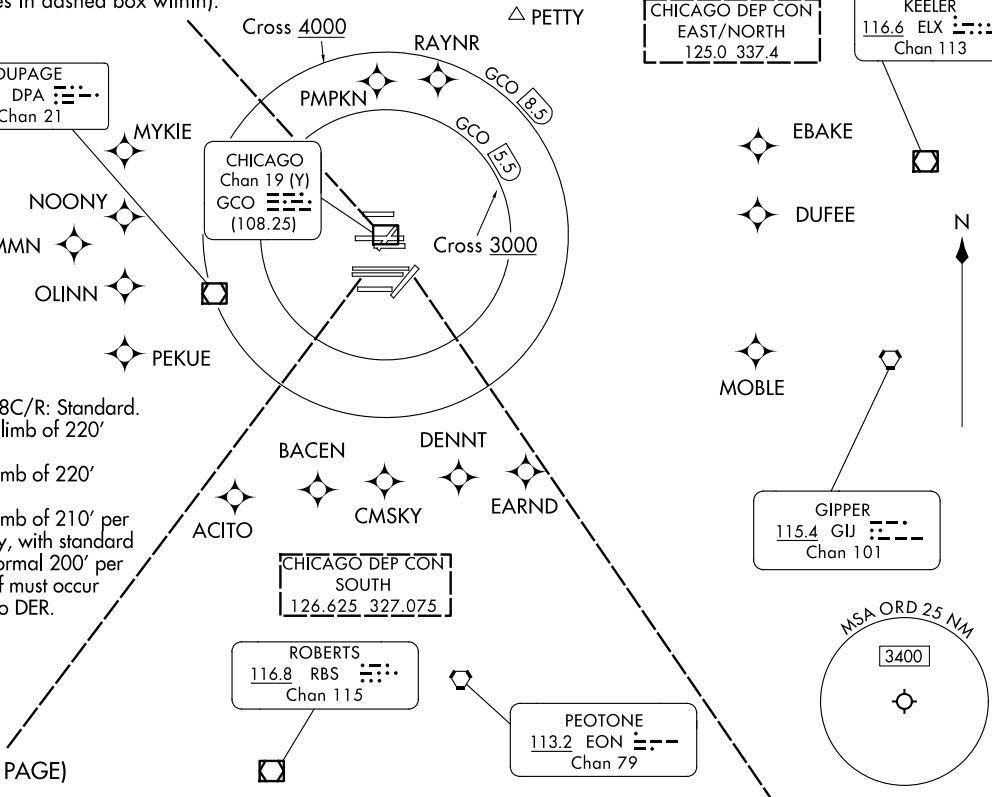
ROBERTS
116.8 RBS
Chan 115

PEOTONE
113.2 EON
Chan 79

CHICAGO DEP CON
SOUTH
126.625 327.075

GIPPER
115.4 GU
Chan 101

MSA ORD 25 NM
3400



24025

O'HARE EIGHT DEPARTURE

CHICAGO O'HARE INTL (ORD)
CHICAGO, ILLINOIS

AL-166 (FAA)

O'HARE EIGHT DEPARTURE



DEPARTURE ROUTE DESCRIPTION

ALL AIRCRAFT: Expect RADAR vectors to first enroute navaid/fix.
Expect clearance to requested altitude/flight level ten minutes after departure.

ALL AIRCRAFT: Cross 5.5 DME arc of GCO DME at or above 3000, cross
8.5 DME arc of GCO DME at or above 4000, maintain 5000 or assigned altitude.
If unable to comply advise ATC as soon as possible prior to departure.

EC-3, 20 FEB 2025 to 20 MAR 2025

EC-3, 20 FEB 2025 to 20 MAR 2025