

WAAS CH 81934 W10B	APP CRS 093°	Rwy Idg 10540 TDZE 669 Apt Elev 680
--	------------------------	--

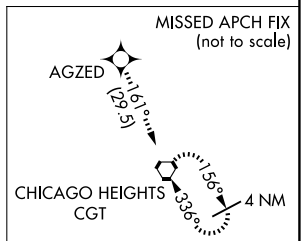
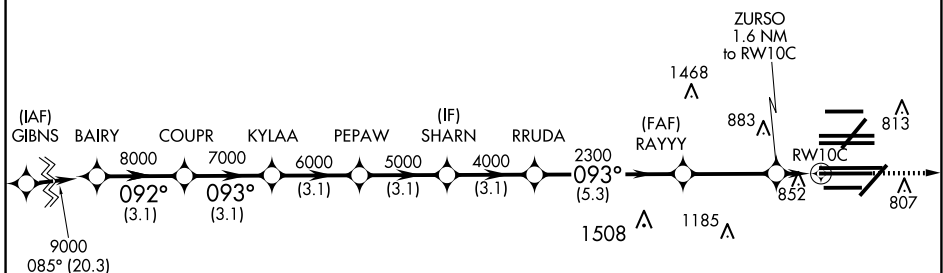
RNAV (GPS) RWY 10C

CHICAGO O'HARE INTL (ORD)

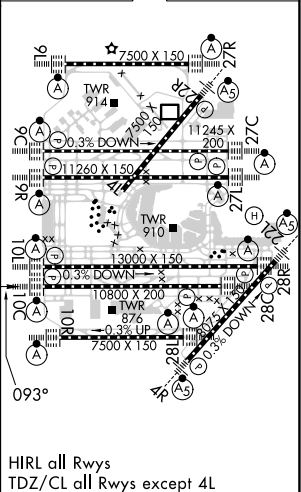
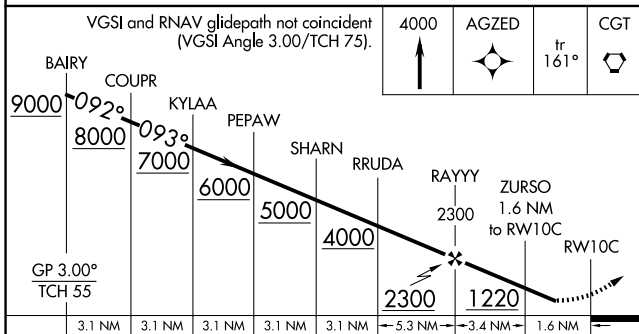
RNP APCH - GPS.	ALSF-2	MISSED APPROACH: Climb to 4000 direct AGZED and on track 161° to CGT VORTAC and hold.
<p>Simultaneous approach authorized. For uncompensated Baro-VNAV systems, LNAV/VNAV NA below -19°C or above 54°C. LNAV procedure NA during simultaneous operations. Use of FD or AP required during simultaneous operations. Rwy 10C helicopter visibility reduction below RVR 4000 NA.</p>		

D-ATIS 135.4 282.225	CHICAGO APP CON 119.0 292.125	O'HARE TOWER 120.75 348.0	GND CON (TWR NORTH) 124.125 (TWR SOUTH) 118.05 (ALL TWRs) 226.675	(TWR CENTER) (OBND) 121.75 (IBND) 121.9	CLNC DEL 121.6	CPDLC
--	--	-------------------------------------	---	---	--------------------------	-------

RADAR REQUIRED



ELEV 680	D	TDZE 669
----------	----------	----------



CATEGORY	A	B	C	D
LPV DA	869/18		200 (200-½)	
LNAV/VNAV DA	1062/40		393 (400-¾)	
LNAV MDA	1120/24	451 (500-½)	1120/45	451 (500-¾)

HIRL all Rwys
TDZ/CL all Rwys except 4L

EC-3, 20 FEB 2025 to 20 MAR 2025

EC-3, 20 FEB 2025 to 20 MAR 2025