

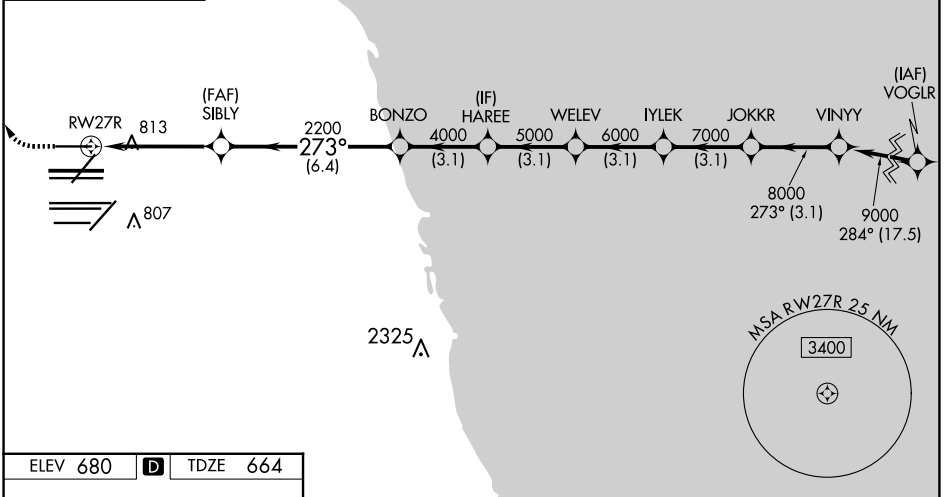
WAAS CH 69508 W27B	APP CRS 273°	Rwy Idg TDZE 664 Apt Elev 680	7500
--	------------------------	---	-------------

RNAV (GPS) RWY 27R

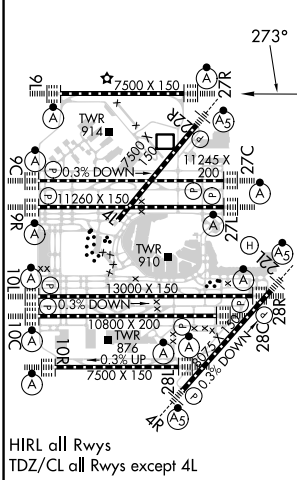
CHICAGO O'HARE INTL (ORD)

RNP APCH.	ALSF-2 	MISSED APPROACH: Climb to 1100 then climbing right turn to 4000 direct OBK VOR/DME and hold, continue climb-in-hold to 4000.
RADAR required for procedure entry.		
<p>Simultaneous approach authorized. LNAV procedure NA during simultaneous operations. Use of FD or AP providing RNAV track guidance required during simultaneous operations. For uncompensated Baro-VNAV systems, procedure NA below -1°C or above 54°C.</p>		

D-ATIS 135.4 282.225	CHICAGO APP CON 119.0 292.125	O'HARE TOWER 128.15 348.0	GND CON (TWR NORTH) 124.125 (TWR SOUTH) 118.05 226.675 (ALL TWRs)	(TWR CENTER) (OBND) 121.75 (IBND) 121.9	CLNC DEL 121.6	CPDLC
--	---	-------------------------------------	---	---	--------------------------	-------



ELEV 680	D	TDZE 664
----------	----------	----------



1100	4000	OBK				
* LNAV only.						
* 1.3 NM to RW27R						
* 1.3 NM to RW27R						
2200	4000	5000	6000	7000	8000	9000
1.3	3.4	6.4 NM	3.1 NM	3.1 NM	3.1 NM	3.1 NM
273°						273°
GP 3.00° TCH 55						
CATEGORY	A	B	C	D		
LPV DA	864/18		200 (200-½)			
LNAV/VNAV DA	961/24		297 (300-½)			
LNAV MDA	1120/24 456 (500-½)		1120/45 456 (500-¾)			

EC-3, 20 FEB 2025 to 20 MAR 2025

EC-3, 20 FEB 2025 to 20 MAR 2025