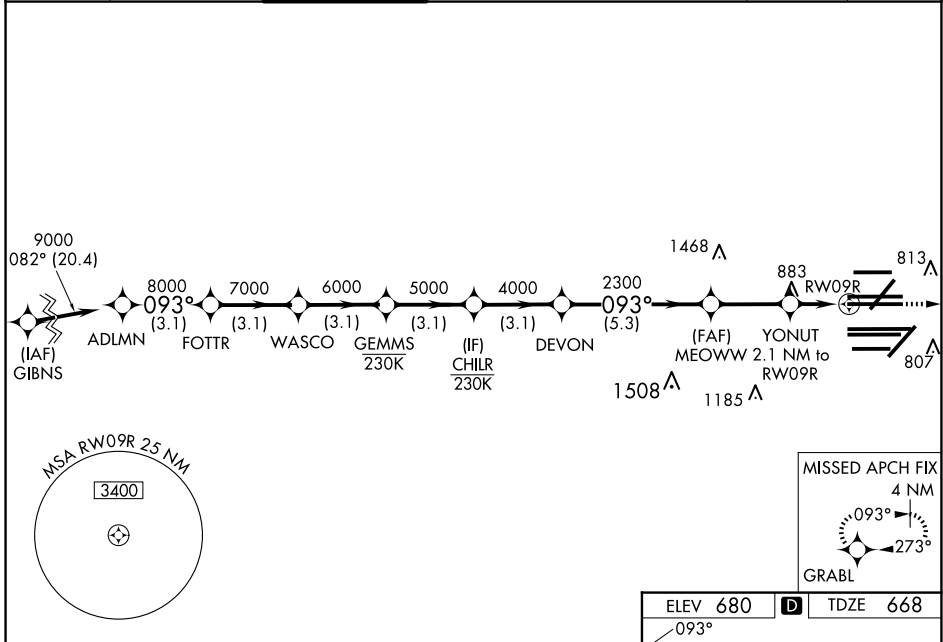


WAAS CH 78204 W09A	APP CRS 093°	Rwy ldg 11260 TDZE 668 Apt Elev 680
--	------------------------	--

RNAV (GPS) RWY 9R

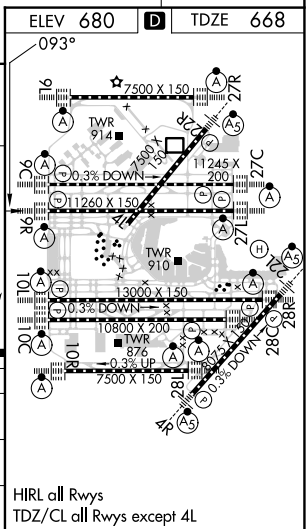
CHICAGO O'HARE INTL (ORD)

RNP APCH - GPS.		<p>Simultaneous approach authorized. LNAV procedure NA during simultaneous operations. Use of FD or AP required during simultaneous operations. For uncompensated Baro-VNAV systems, LNAV/VNAV NA below -19°C or above 54°C. For inop ALS, increase LNAV/VNAV all Cats visibility to RVR 4500. For inop ALS, increase LNAV Cats C/D visibility to 1 3/8 SM.</p>		<p>MISSED APPROACH: Climb to 4000 direct GRABL and hold.</p>		
D-ATIS 135.4 282.225	CHICAGO APP CON 119.0 292.125	O'HARE TOWER 126.9 348.0	GND CON (TWR NORTH) 124.125 (TWR SOUTH) 118.05 (ALL TWRs) 226.675	(TWR CENTER) 121.75 (OBND) 121.9 (IBND)	CLNC DEL 121.6	CPDLC



VGSI and RNAV glidepath not coincident (VGSI Angle 3.00/TCH 76).

ADLMN	FOTTR	WASCO	GEMMS	CHILR	DEVON	MEOWW	YONUT	RW09R
9000	8000	7000	6000	5000	4000	2300	1380	4000
GP 3.00°								
TCH 58								
	3.1 NM	3.1 NM	3.1 NM	3.1 NM	3.1 NM	5.3 NM	2.8 NM	0.9 NM
CATEGORY	A		B		C		D	
LPV DA			868/18		200 (200-1/2)			
LNAV/VNAV DA			976/24		308 (300-1/2)			
LNAV MDA	1140/24		472 (500-1/2)		1140/50		472 (500-1)	



EC-3, 20 FEB 2025 to 20 MAR 2025

EC-3, 20 FEB 2025 to 20 MAR 2025