

CHICAGO, ILLINOIS

AL-166 (FAA)

RNAV (GPS) PRM RWY 10C (CLOSE PARALLEL)

CHICAGO O'HARE INTL (ORD)

| | | |
|--|------------------------|--|
| WAAS CH 81934 W10B | APP CRS 093° | Rwy Idg 10540 TDZE 669 Apt Elev 680 |
|--|------------------------|--|

RNP APCH - GPS.

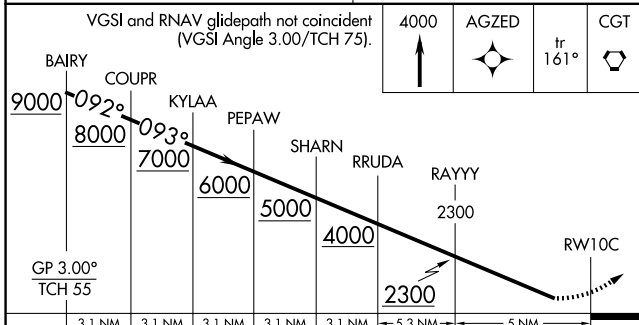
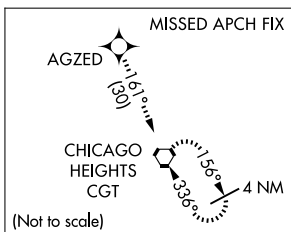
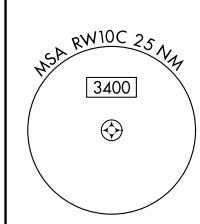
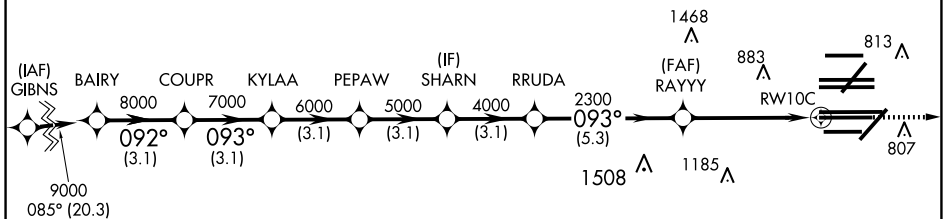
Simultaneous approach authorized. Dual VHF comm required. See additional requirements on AAUP. For uncompensated Baro-VNAV systems, LNAV/VNAV NA below -19°C or above 54°C. Rwy 10C helicopter visibility reduction below RVR 4000 NA. Use of FD or AP required during simultaneous operations.

ALSF-2

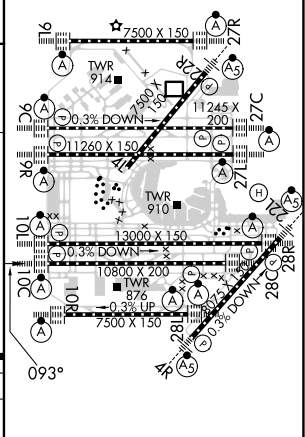
MISSED APPROACH: Climb to 4000 direct AGZED and on track 161° to CGT VORTAC and hold.

| | | | | | | |
|--|---|---|--|---|--------------------------|-------|
| D-ATIS 135.4 282.225 | CHICAGO APP CON 119.0 292.125 | O'HARE TOWER 120.75 348.0 PRM 119.625 | GND CON (TWR CENTER) 124.125 (TWR NORTH) 118.05 (TWR SOUTH) 226.675 (ALL TWRs) | (TWR CENTER) 121.75 (OBND) 121.9 (IBND) | CLNC DEL 121.6 | CPDLC |
|--|---|---|--|---|--------------------------|-------|

RADAR REQUIRED



| | | |
|----------|----------|----------|
| ELEV 680 | D | TDZE 669 |
|----------|----------|----------|



| | | | | | | | |
|--------------------|--------|--------|---------|--------|---------------|--------|------|
| GP 3.00° TCH 55 | 3.1 NM | 3.1 NM | 3.1 NM | 3.1 NM | 3.1 NM | 5.3 NM | 5 NM |
| CATEGORY | A | | B | | C | D | |
| LPV DA | | | 869/18 | | 200 (200-1/2) | | |
| LNAV/VNAV DA | | | 1062/40 | | 393 (400-3/4) | | |

HIRL all Rwy's
TDZ/CL all Rwy's except 4L

CHICAGO, ILLINOIS
Orig-B 25JAN24

41°59'N-87°54'W

CHICAGO O'HARE INTL (ORD)

RNAV (GPS) PRM RWY 10C (CLOSE PARALLEL)

EC-3, 20 FEB 2025 to 20 MAR 2025

EC-3, 20 FEB 2025 to 20 MAR 2025