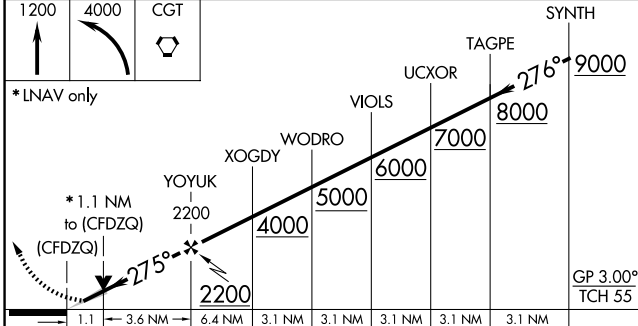
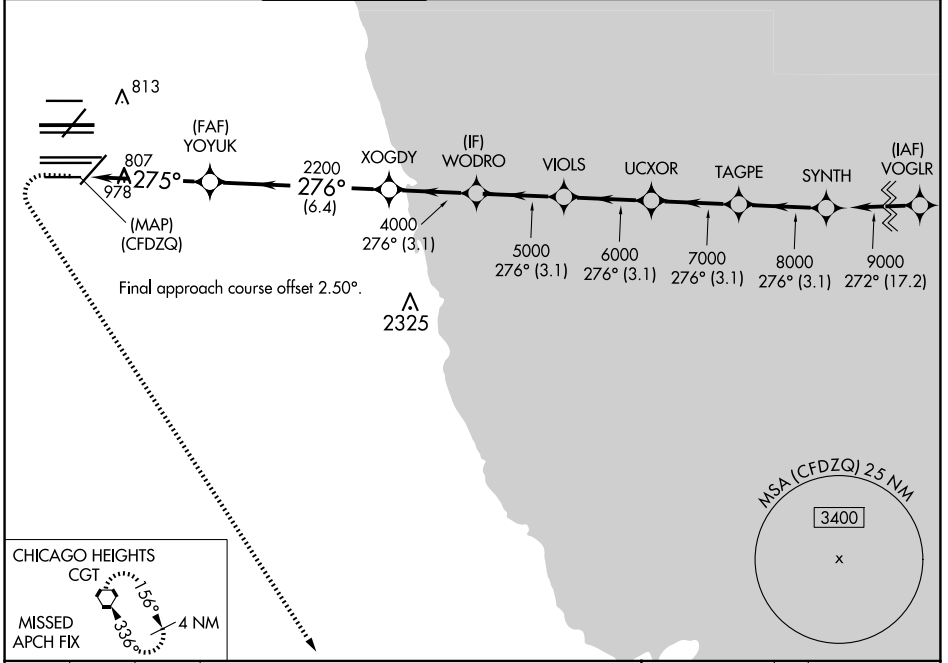


WAAS CH <b>93839</b> <b>W28E</b>	APP CRS <b>275°</b>	Rwy Idg TDZE Apt Elev	<b>7500</b> <b>667</b> <b>680</b>
--	------------------------	-----------------------------	---

# RNAV (GPS) Y RWY 28L

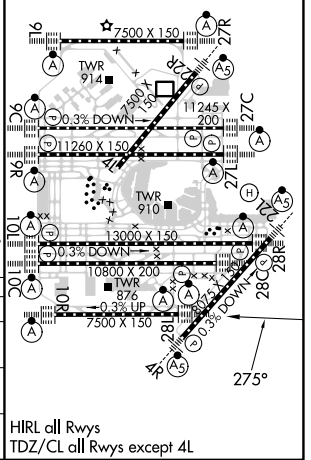
CHICAGO O'HARE INTL (ORD)

RNP APCH		ALSF-2		MISSED APPROACH: Climb to 1200 then climbing left turn to 4000 direct CGT VORTAC and hold.		
<p>Simultaneous approach authorized. LNAV procedure NA during simultaneous operations. For uncompensated Baro-VNAV systems, LNAV/VNAV NA below -19°C or above 54°C. Use of FD or AP required during simultaneous operations.</p>		<p>Simultaneous approach authorized. LNAV procedure NA during simultaneous operations. For uncompensated Baro-VNAV systems, LNAV/VNAV NA below -19°C or above 54°C. Use of FD or AP required during simultaneous operations.</p>				
D-ATIS <b>135.4</b> <b>282.225</b>	CHICAGO APP CON <b>119.0 292.125</b>	O'HARE TOWER <b>133.0 348.0</b>	GND CON (TWR NORTH) <b>124.125</b> (TWR SOUTH) <b>118.05</b> (ALL TWRs) <b>226.675</b>	(TWR CENTER) <b>121.75</b> (OBND) <b>121.9</b> (IBND)	CLNC DEL <b>121.6</b>	CPDLC



ELEV 680	TDZE 667
----------	----------

CATEGORY	A	B	C	D
LPV DA		917/24	250 (300-1/2)	
LNAV/VNAV DA		1090/40	423 (500-3/4)	
LNAV MDA	1060/24	393 (400-1/2)	1060/35	393 (400-5/8)



EC-3, 20 FEB 2025 to 20 MAR 2025

EC-3, 20 FEB 2025 to 20 MAR 2025