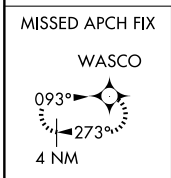
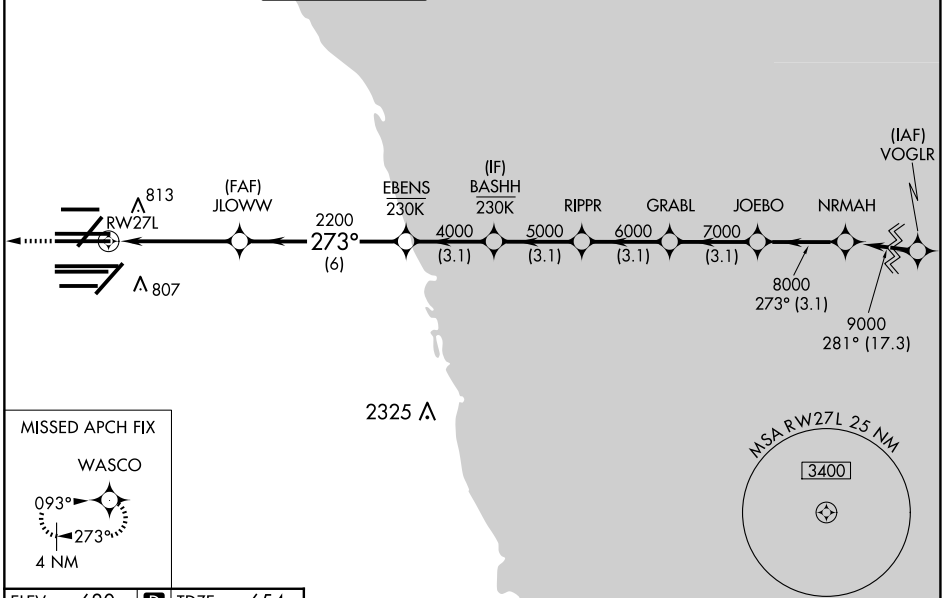


WAAS CH 77804 W27A	APP CRS 273°	Rwy Idg 11260 TDZE 654 Apt Elev 680
--	------------------------	--

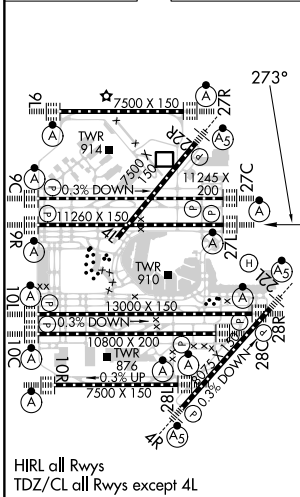
RNAV (GPS) Z RWY 27L

CHICAGO O'HARE INTL (ORD)

RNP APCH - GPS.		ALSIF-2		MISSED APPROACH: Climb to 4000 direct WASCO and hold.		
<p>Simultaneous approach authorized. LNAV procedure NA during simultaneous operations. Use of FD or AP required during simultaneous operations. For uncompensated Baro-VNAV systems, LNAV/VNAV NA below -19°C or above 54°C.</p>						
D-ATIS 135.4 282.225	CHICAGO APP CON 119.0 292.125	O'HARE TOWER 126.9 348.0	GND CON 124.125 (TWR NORTH) 118.05 (TWR SOUTH) 226.675 (ALL TWR/S)	(TWR CENTER) 121.75 (IOBND) 121.9 (IBND)	CLNC DEL 121.6	CPDLC



ELEV 680	D	TDZE 654
----------	----------	----------



4000	WASCO	VGSI and RNAV glidepath not coincident (VGSI Angle 3.00/TCH 77).		NRMAH				
↑		JLOWWW	EBENS	BASHHH	RIPPR	GRABL	JOEBO	NRMAH
		2200	4000	5000	6000	7000	8000	9000
		1.2 NM	3.5 NM	6 NM	3.1 NM	3.1 NM	3.1 NM	3.1 NM
		RW27L						GP 3.00° TCH 57
CATEGORY	A	B	C	D				
LPV	DA	854/18		200 (200-½)				
LNAV/VNAV	DA	1088/40		434 (500-¾)				
LNAV MDA	1100/24	446 (500-½)		1100/45	446 (500-¾)			