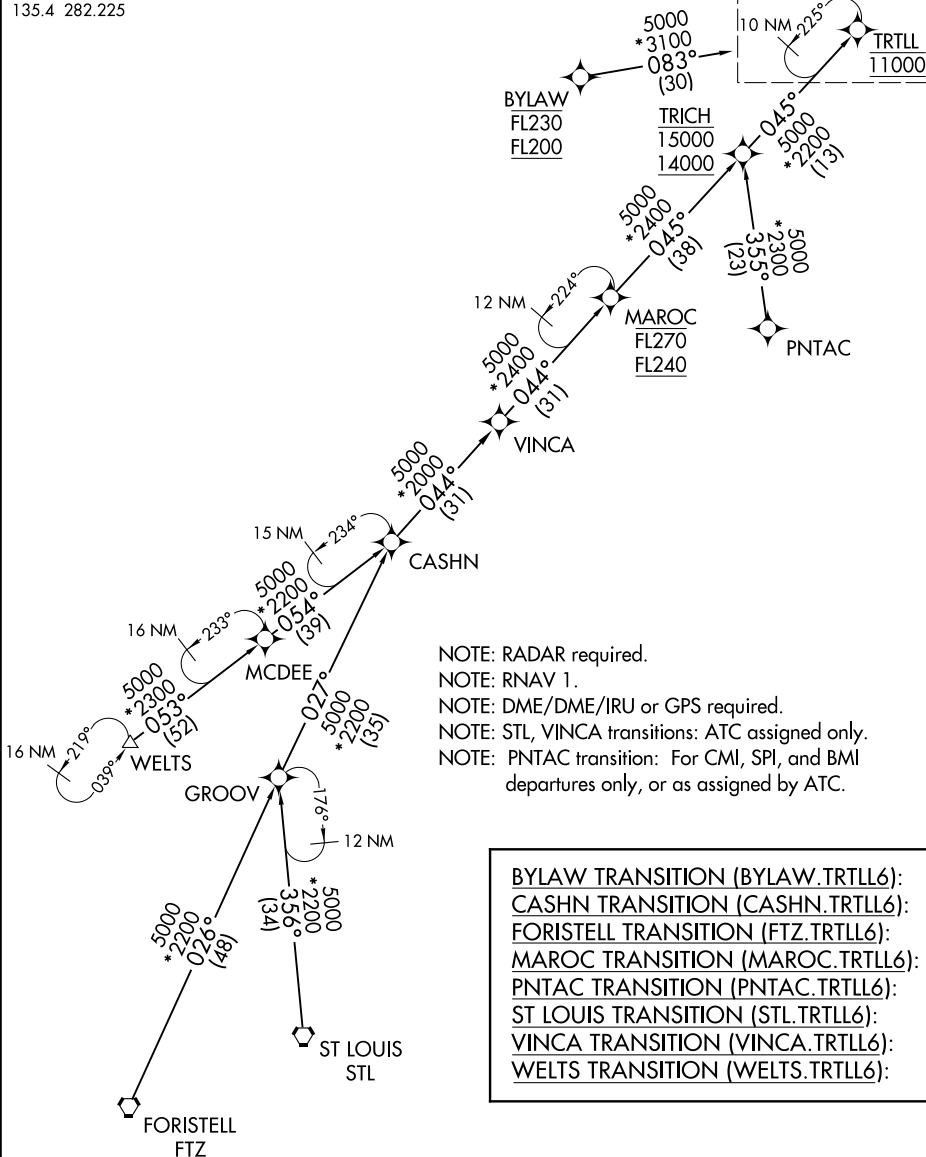


TRTLL SIX ARRIVAL (RNAV) Transition Routes

CHICAGO APP CON
119.0 292.125
D-ATIS
135.4 282.225

See following page for
Arrival Routes



(CONTINUED ON FOLLOWING PAGE)

NOTE: Chart not to scale.

EC-3, 20 FEB 2025 to 20 MAR 2025

EC-3, 20 FEB 2025 to 20 MAR 2025

TRTLL SIX ARRIVAL (RNAV) Arrival Routes

ARRIVAL ROUTE DESCRIPTION

From TRTLL on track 045° to HIHRY, then on track 045° to RINNO.

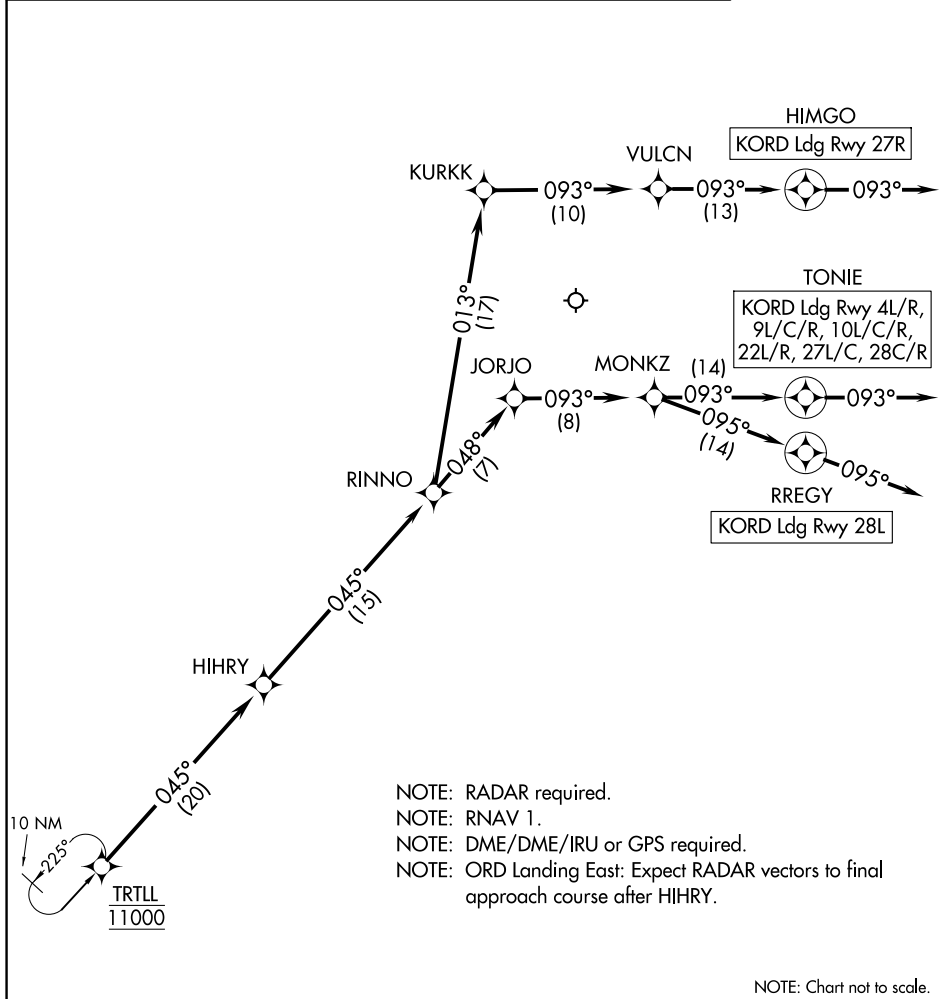
LANDING RWYS 4L/R, 9L/C/R, 10L/C/R, 22L/R, 27L/C, 28C/R:

From RINNO on track 048° to JORJO, then on track 093° to MONKZ, then on track 093° to TONIE, then on track 093°. Expect RADAR vectors to final approach course.

LANDING RWY 27R: From RINNO on track 013° to KURKK, then on track 093° to VULCN, then on track 093° to HIMGO, then on track 093°. Expect RADAR vectors to final approach course.

LANDING RWY 28L: From RINNO on track 048° to JORJO, then on track 093° to MONKZ, then on track 095° to RREGY, then on track 095°. Expect RADAR vectors to final approach course.

CHICAGO APP CON
119.0 292.125
D-ATIS
135.4 282.225



- NOTE: RADAR required.
- NOTE: RNAV 1.
- NOTE: DME/DME/IRU or GPS required.
- NOTE: ORD Landing East: Expect RADAR vectors to final approach course after HIHRY.

NOTE: Chart not to scale.

EC-3, 20 FEB 2025 to 20 MAR 2025

EC-3, 20 FEB 2025 to 20 MAR 2025