

CHICAGO APP CON
119.0 292.125
D-ATIS
135.4 282.225

(CONTINUED ON FOLLOWING PAGE)

VEECK VEECK5) 20310
VEECK FIVE ARRIVAL (RNAV) Transition Routes

AL-166 (FAA)
CHICAGO O'HARE INTL (ORD)
CHICAGO, ILLINOIS

See following
page for
Arrival Route.

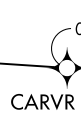


104°
10 NM

9000
*2400
284°
(34)



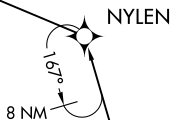
9000
*2300
277°
(15)



1098°
10 NM

9000
*2200
278°
(16)

FORT WAYNE
FWA



167°
8 NM

9000
*2400
347°
(23)



- NOTE: RADAR required.
- NOTE: RNAV 1.
- NOTE: DME/DME/IRU or GPS required.
- NOTE: Expect possible reroute to WATSN RNAV STAR.
- NOTE: FORT WAYNE Transition: ATC assigned only.

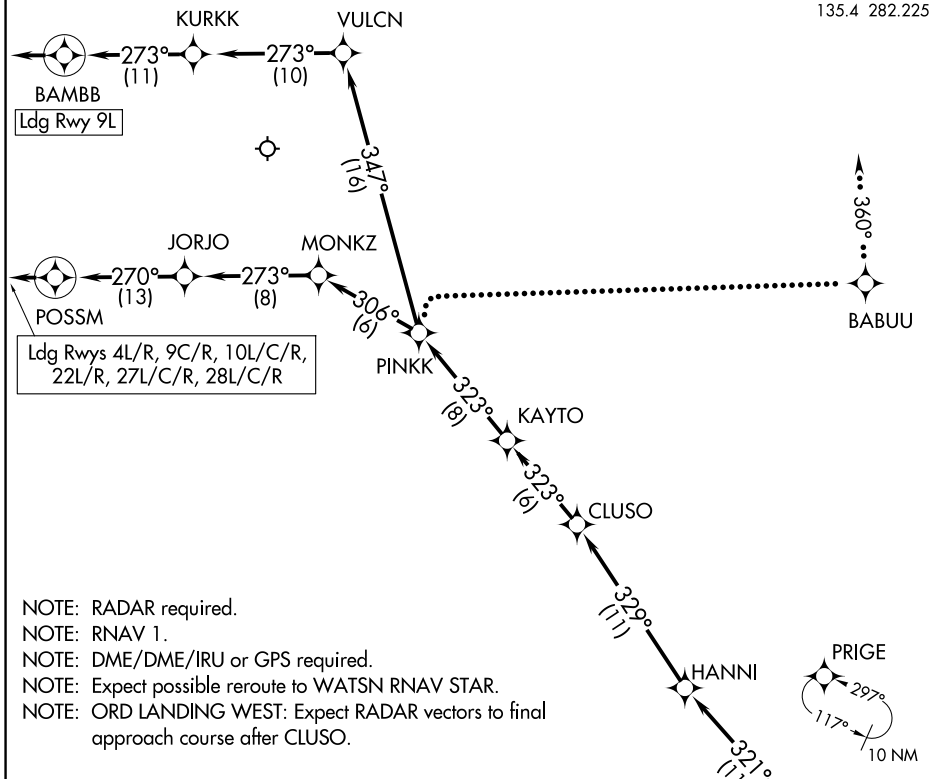
BONNT TRANSITION (BONNT.VEECK5):
FORT WAYNE TRANSITION (FWA.VEECK5):

NOTE: Chart not to scale.

VEECK FIVE ARRIVAL (RNAV) Transition Routes
VEECK.VEECK5) 05NOV20
CHICAGO, ILLINOIS
CHICAGO O'HARE INTL (ORD)

VEECK FIVE ARRIVAL (RNAV) Arrival Routes

CHICAGO APP CON
119.0 292.125
D-ATIS
135.4 282.225



ARRIVAL ROUTE DESCRIPTION

From VEECK on track 302° to BOONE, then on track 321° to HANNI, then on track 329° to CLUSO, then on track 323° to KAYTO, then on track 323° to PINKK.

LANDING RWYS 4L/R, 9C/R, 10L/C/R, 22L/R, 27L/C/R, 28L/C/R:
From PINKK on track 306° to MONKZ, then on track 273° to JORJO, then on track 270° to POSSM, then on track 270°. Expect RADAR vectors to final approach course.

LANDING RWY 9L: From PINKK on track 347° to VULCN, then on track 273° to KURKK, then on track 273° to BAMBB, then on track 273°. Expect RADAR vectors to final approach course.

LOST COMMUNICATIONS:

ORD AIRCRAFT LANDING WEST: At PINKK, turn right direct BABUU, maintain 5000, then via 360° heading, intercept localizer and execute ILS or LOC Rwy 28R approach.

ORD AIRCRAFT LANDING EAST: Standard.

NOTE: Chart not to scale.

VEECK FIVE ARRIVAL (RNAV) Arrival Routes

EC-3, 20 FEB 2025 to 20 MAR 2025

EC-3, 20 FEB 2025 to 20 MAR 2025