

CHICAGO APP CON
119.0 292.125
D-ATIS
135.4 282.225

- EMMMA TRANSITION (EMMMA.WYNDE2)
- FLINT TRANSITION (FNT.WYNDE2)
- OBSTR TRANSITION (OBSTR.WYNDE2)
- ODAXY TRANSITION (ODAXY.WYNDE2)
- SAULT STE MARIE TRANSITION (SSM.WYNDE2)
- SMUUV TRANSITION (SMUUV.WYNDE2)
- TRAVERSE CITY TRANSITION (TVC.WYNDE2)
- UFDUH TRANSITION (UFDUH.WYNDE2)
- VICTORY TRANSITION (VIO.WYNDE2)

(WYNDE.WYNDE2) 20310

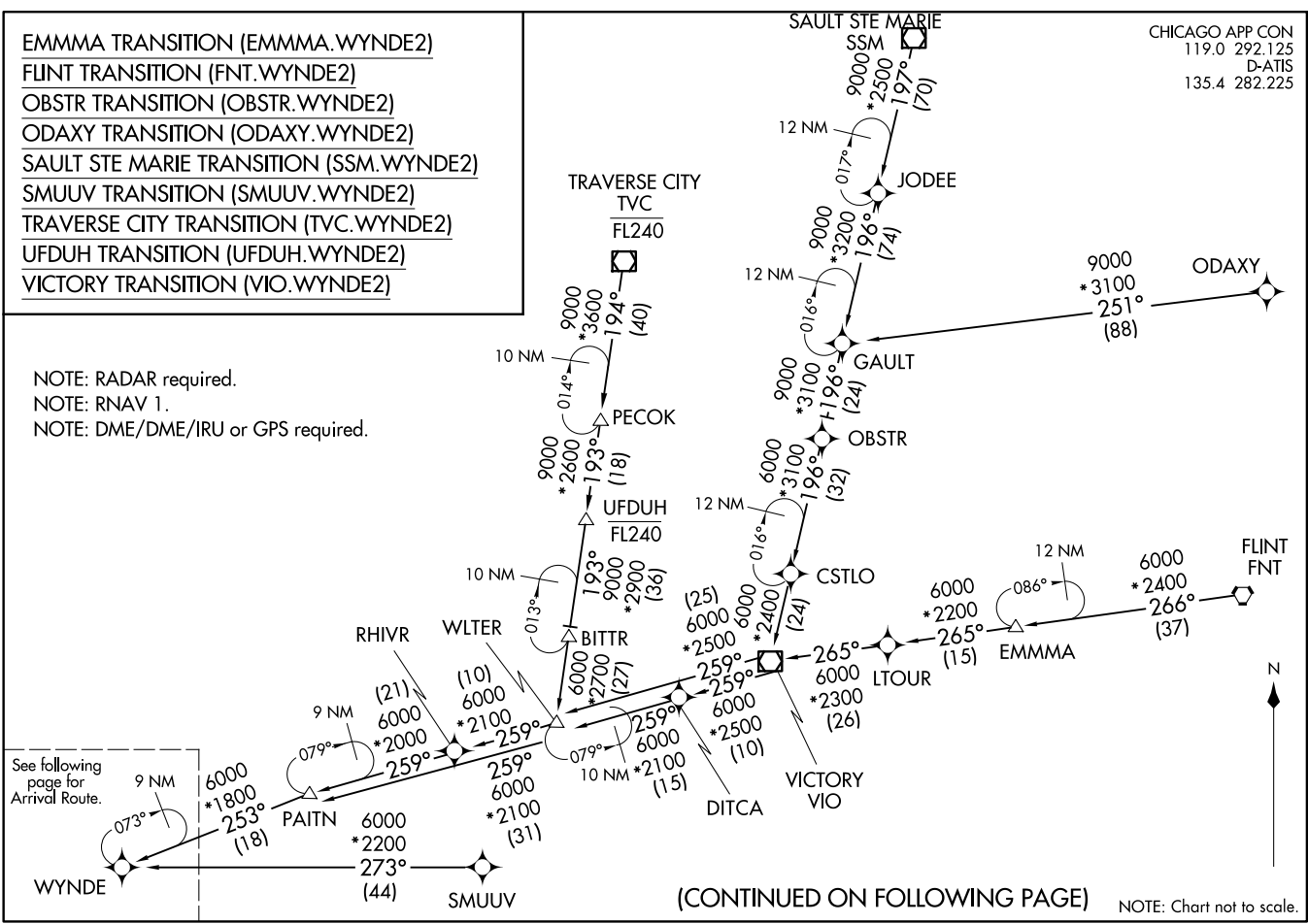
AL-156 (FAA)

CHICAGO O'HARE INTL (ORD)
CHICAGO, ILLINOIS

WYNDE TWO ARRIVAL (RNAV) Transition Routes
(WYNDE.WYNDE2) 05NOV20

CHICAGO, ILLINOIS
CHICAGO O'HARE INTL (ORD)

NOTE: RADAR required.
NOTE: RNAV 1.
NOTE: DME/DME/IRU or GPS required.



(CONTINUED ON FOLLOWING PAGE)

NOTE: Chart not to scale.

ARRIVAL ROUTE DESCRIPTION

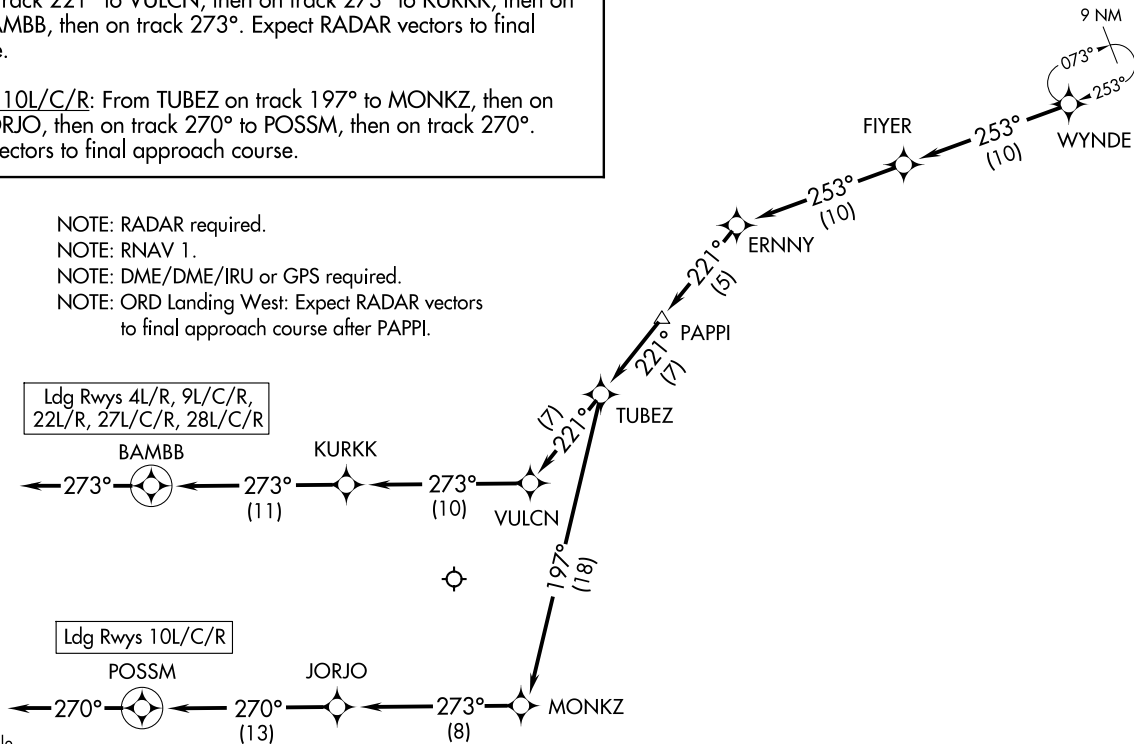
From WYNDE on track 253° to FIYER, then on track 253° to ERNNY, then on track 221° to PAPPY, then on track 221° to TUBEZ.

LANDING RWYS 4L/R, 9L/C/R, 22L/R, 27L/C/R, 28L/C/R:

From TUBEZ on track 221° to VULCN, then on track 273° to KURKK, then on track 273° to BAMBB, then on track 273°. Expect RADAR vectors to final approach course.

LANDING RWY 10L/C/R: From TUBEZ on track 197° to MONKZ, then on track 273° to JORJO, then on track 270° to POSSM. Expect RADAR vectors to final approach course.

CHICAGO APP CON
119.0 292.125
D-ATIS
135.4 282.225



WYNDE TWO ARRIVAL (RNAV) Arrival Routes
(WYNDE: WYNDE2) 05NOV20

CHICAGO, ILLINOIS
CHICAGO O'HARE INTL (ORD)

(WYNDE: WYNDE2) 20310
WYNDE TWO ARRIVAL (RNAV) Arrival Routes
AL-166 (FAA)

CHICAGO O'HARE INTL (ORD)
CHICAGO, ILLINOIS