

HI-ILS or LOC Z RWY 26

LOC I-DDX 109.9	APCH CRS 261°	Rwy ldg 11,760 TDZE 109 Arprt Elev 109
---------------------------	-------------------------	--

[USAF]

SEYMOUR JOHNSON AFB (KGSB)

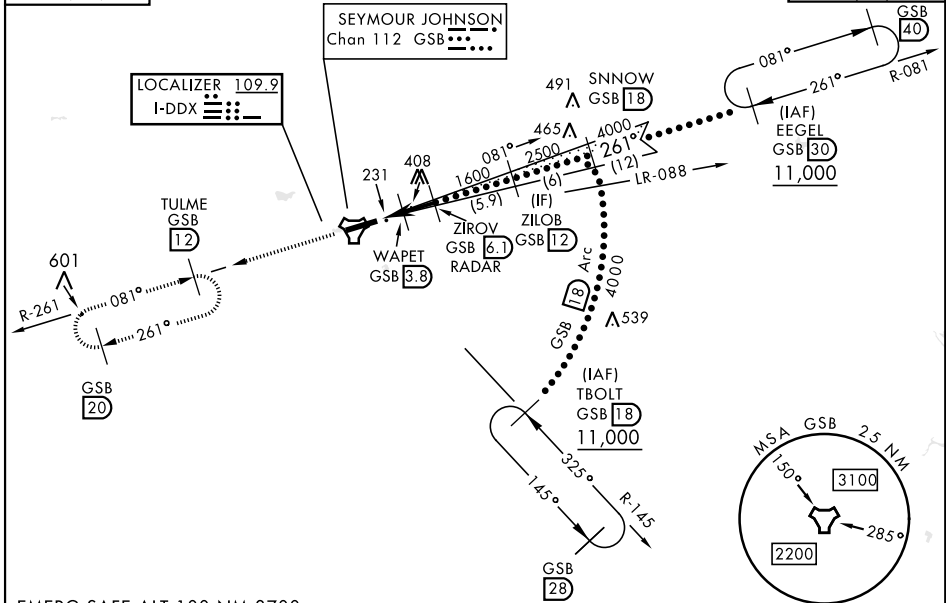
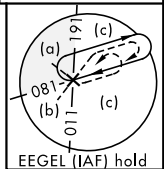
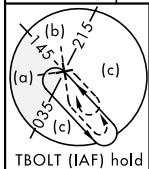
RADAR or DME required.

ALSIF-1

MISSED APPROACH: Climb to 2200 via GSB
TACAN R-261 to TULME and hold.

▼ * When ALS inop, increase RVR to 40 and vis to 3/4 mile.
** When ALS inop, increase RVR to 60 and vis to 1 1/8 miles.

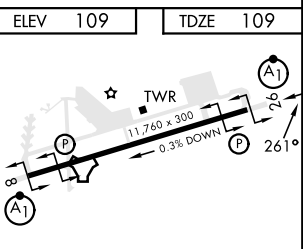
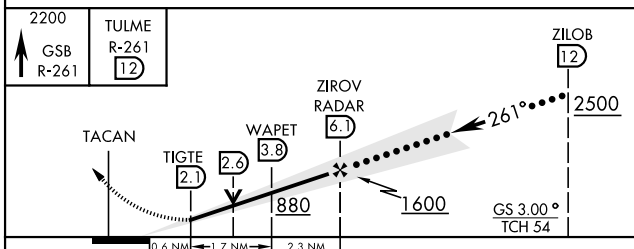
ATIS ★ 317.625	APP CON 123.7 290.9 (258°-110°) 119.7 273.6 (111°-257°)	TOWER ★ 126.25 370.875	GND CON 132.45 275.8	CLNC DEL 128.025 270.8
--------------------------	---	----------------------------------	--------------------------------	----------------------------------



SE-2, 20 FEB 2025 to 20 MAR 2025

SE-2, 20 FEB 2025 to 20 MAR 2025

EMERG SAFE ALT 100 NM 3700



CATEGORY	C	D	E
S-ILS 26 *	309/24	200 (200-1/2)	
S-LOC 26 **	500/35	391 (400-5/8)	
CIRCLING ***	680-1 1/2 571 (600-1 1/2)	740-2 631 (700-2)	740-2 1/4 631 (700-2 1/4)

HIRL Rwy 8-26					
FAF to MAP 4 NM					
Knots	120	140	160	180	200
Min:Sec	2:00	1:43	1:30	1:20	1:12

HI-ILS or LOC Z RWY 26