

GOLDSBORO, NORTH CAROLINA

# ILS or LOC Y RWY 26

LOC I-DDX <b>109.9</b>	APCH CRS <b>261°</b>	Rwy ldg 11,760 TDZE <b>109</b> Arprt Elev <b>109</b>
---------------------------	-------------------------	---------------------------------------------------------------------

[USAF]

SEYMOUR JOHNSON AFB (KGSB)

RADAR or DME required



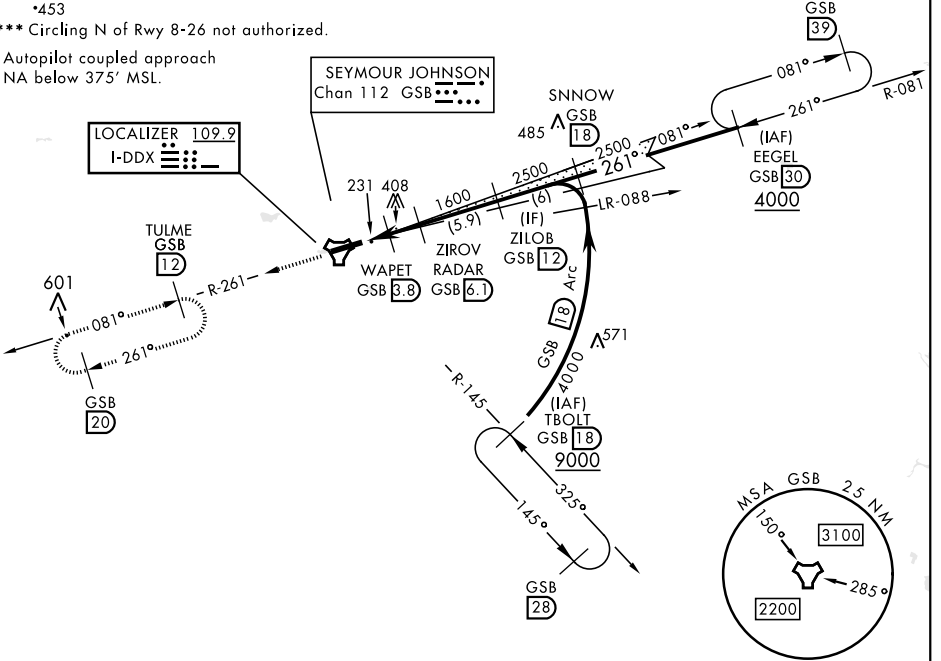
MISSED APPROACH: Climb to 2200 via GSB TACAN R-261 to TULME and hold.

▼ \* When ALS inop, increase RVR to 40 and vis to 3/4 mile.  
 \*\* When ALS inop, increase CAT AB RVR to 55 and vis to 1 mile, CAT CDE RVR to 60 and vis to 1 1/2 miles.

ATIS ★ <b>317.625</b>	APP CON <b>123.7 290.9</b> (258°-110°) <b>119.7 273.6</b> (111°-257°)	TOWER ★ <b>126.25 370.875</b>	GND CON <b>132.45 275.8</b>	CLNC DEL <b>128.025 270.8</b>
--------------------------	-----------------------------------------------------------------------------	----------------------------------	--------------------------------	----------------------------------

\*453  
 \*\*\* Circling N of Rwy 8-26 not authorized.

Autopilot coupled approach  
NA below 375' MSL.



SE-2, 20 FEB 2025 to 20 MAR 2025

SE-2, 20 FEB 2025 to 20 MAR 2025

EMERG SAFE ALT 100 NM 3700

ELEV 109	TDZE 109	2200 GSB R-261	TULME R-261 12					
HIRL Rwy 8-26								
FAF to MAP 4 NM								
Knots		60	90	120	150	180		
Min:Sec		4:00	2:40	2:00	1:36	1:20		
<input checked="" type="checkbox"/> CIRCLING ***								
CATEGORY	A	B	C	D	E			
S-ILS 26*	309/24		200	(200-1/2)				
S-LOC 26**	500/24	391 (400-1/2)	500/35	391 (400-3/4)				
580-1		600-1	680-1 1/2	740-2	740-2 1/4			
471 (500-1)		491 (500-1)	571 (600-1 1/2)	631 (700-2)	631 (700-2 1/4)			

GOLDSBORO, NORTH CAROLINA

35°20'N-77°58'W

SEYMOUR JOHNSON AFB (KGSB)

Amdt 9 03NOV22

# ILS or LOC Y RWY 26