

GOLDSBORO, NORTH CAROLINA

# TACAN Y RWY 26

TACAN GSB Chan <b>112</b>	APCH CRS <b>261°</b>	Rwy ldg <b>11,760</b> TDZE <b>109</b> Arprt Elev <b>109</b>
---------------------------	----------------------	---

[USAF]

SEYMOUR JOHNSON AFB (KGSB)

▼ \* When ALS inop, increase CAT AB RVR to 55, vis to 1 mile, CAT CDE vis to 1½ miles.  
 \*\* Circling N of Rwy 8-26 not authorized.

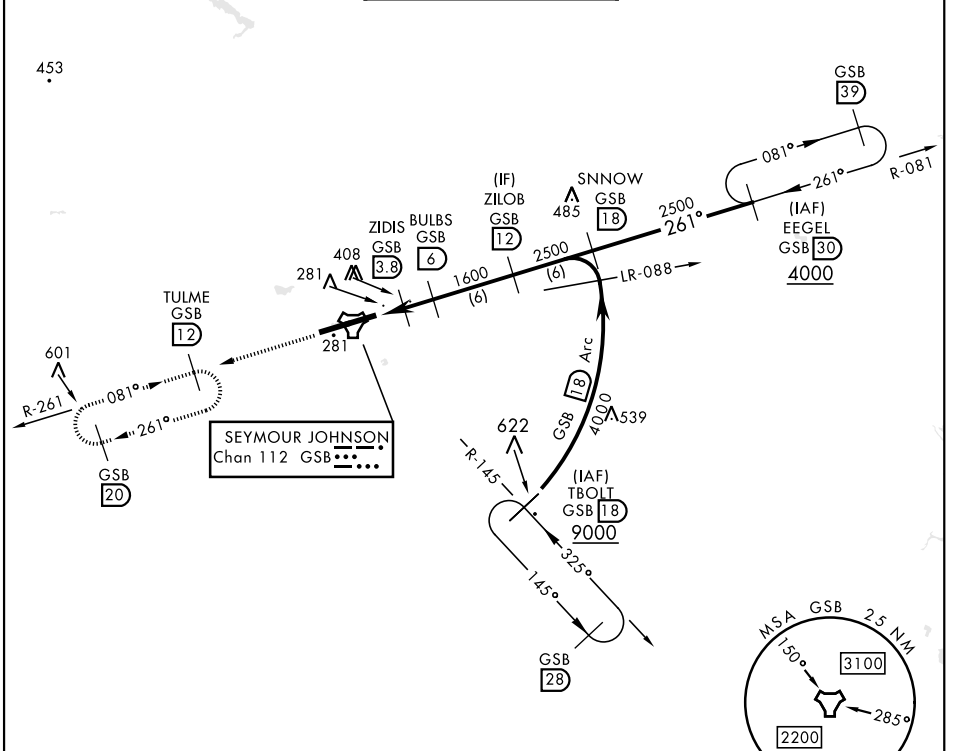


MISSED APPROACH: Climb to 2200 via GSB R-261 to TULME and hold.

ATIS ★ <b>317.625</b>	APP CON <b>123.7 290.9</b> (258°-110°) <b>119.7 273.6</b> (111°-257°)	TOWER ★ <b>126.25 370.875</b>	GND CON <b>132.45 275.8</b>	CLNC DEL <b>128.025 270.8</b>
-----------------------	--	-------------------------------	-----------------------------	-------------------------------

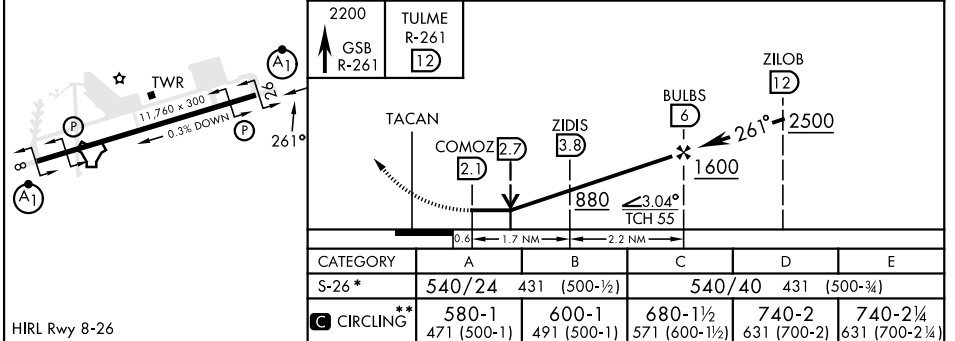
SE-2, 20 FEB 2025 to 20 MAR 2025

SE-2, 20 FEB 2025 to 20 MAR 2025



EMERG SAFE ALT 100 NM 3700

ELEV 109	TDZE 109
----------	----------



GOLDSBORO, NORTH CAROLINA

35° 20'N-77° 58'W

SEYMOUR JOHNSON AFB (KGSB)

Amdt 8 03NOV22

# TACAN Y RWY 26