

GOLDSBORO, NORTH CAROLINA

TACAN Y RWY 8

TACAN GSB Chan 112	APCH CRS 081°	Rwy Idg 11,760 TDZE 73 Arpt Elev 109
---------------------------	----------------------	---

[USAF]

SEYMOUR JOHNSON AFB (KGSB)

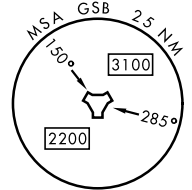
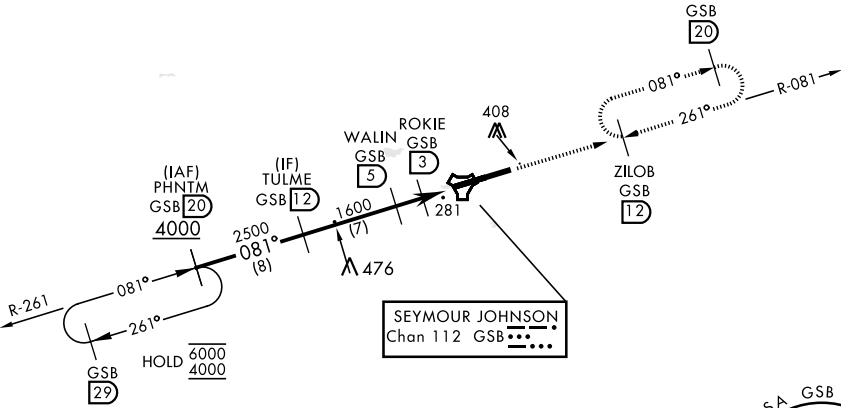
▼ * When ALS inop, increase CAT AB RVR to 55, vis to 1 mile, CAT CDE vis to 1 3/8 miles.
 ** Circling N of Rwy 8-26 not authorized.



MISSED APPROACH: Climb to 2300 via GSB R-081 to ZILOB and hold.

ATIS ★ 317.625	APP CON 123.7 290.9 (258°- 110°) 119.7 273.6 (111°- 257°)	TOWER ★ 126.25 370.875	GND CON 132.45 275.8	CLNC DEL 128.025 270.8
-----------------------	--	-------------------------------	-----------------------------	-------------------------------

453

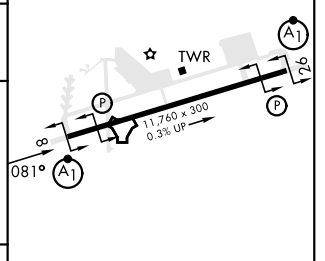
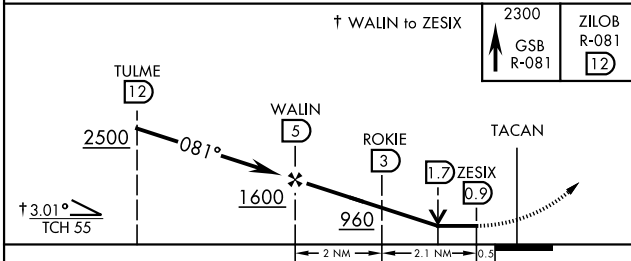


SE-2, 20 FEB 2025 to 20 MAR 2025

SE-2, 20 FEB 2025 to 20 MAR 2025

EMERG SAFE ALT 100 NM 3700

ELEV 109	TDZE 73
----------	---------



CATEGORY	A	B	C	D	E
S-8*	540/24 467 (500-1/2)		540/50 467 (500-1)		
CIRCLING**	580-1 471 (500-1)	600-1 491 (500-1)	680-1 1/2 571 (600-1 1/2)	740-2 631 (700-2)	740-2 1/4 631 (700-2 1/4)

HIRL Rwy 8-26

GOLDSBORO, NORTH CAROLINA

35°20'N-77°58'W

SEYMOUR JOHNSON AFB (KGSB)

Amdt 8 03NOV22

TACAN Y RWY 8