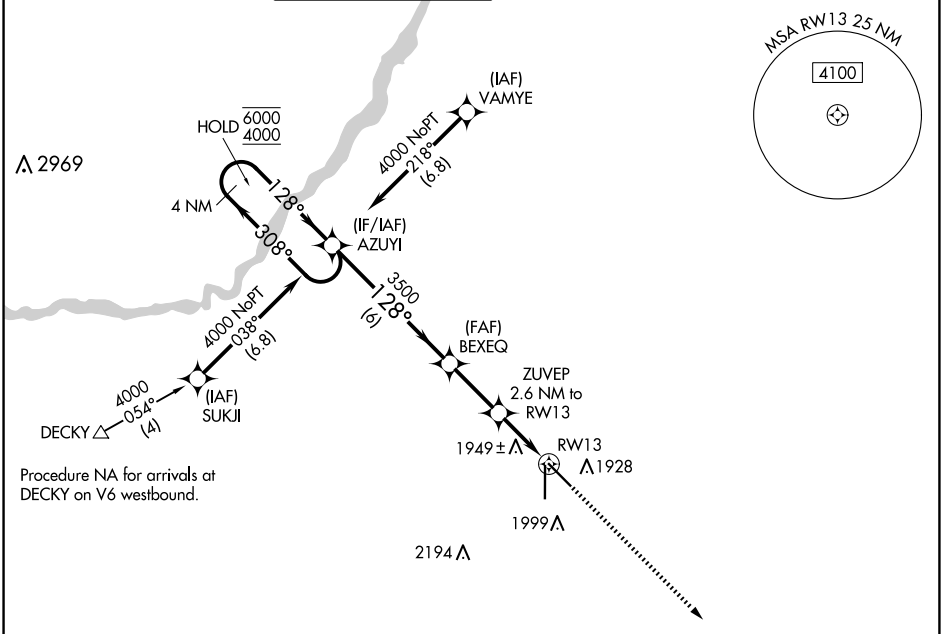


APP CRS	Rwy Idg	6608
128°	TDZE	1842
	Apt Elev	1847

RNAV (GPS) RWY 13

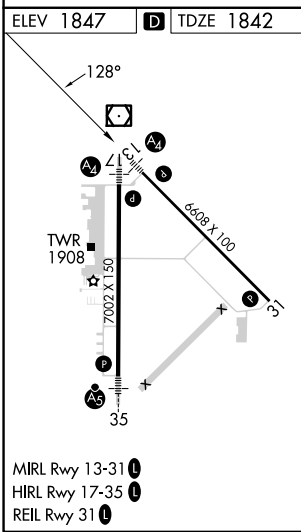
CENTRAL NEBRASKA RGNL (GRI)

RNP APCH - GPS.				MALS	MISSED APPROACH: Climb to 4100 direct AGEKY and hold.		
ATIS	MINNEAPOLIS CENTER	GRAND ISLAND TOWER *	GND CON	CLNC DEL	CLNC DEL	UNICOM	
127.4	119.4 278.8	118.2 (CTAF) 0 259.3	121.9 259.3	121.9	126.05 (when twr closed)	122.95	



NC-2, 20 FEB 2025 to 20 MAR 2025

NC-2, 20 FEB 2025 to 20 MAR 2025



VGS1 and descent angles not coincident (VGS1 Angle 3.00/TCH 35).				4100	AGEKY
4 NM Holding Pattern		BEXEQ	ZUVEP		
6000 ← 308°			2.6 NM to RWY13		
4000 → 128°			1 NM to RWY13		
		3500	2700		
		3.00° TCH 45			
		6 NM	2.5 NM	1.5 NM	1 NM
CATEGORY	A	B	C	D	
LNAV MDA	2200-3/4		358 (400-3/4)		
CIRCLING	2300-1	453 (500-1)	2400-1 1/2	2560-2 1/4	
			553 (600-1 1/2)	713 (800-2 1/4)	