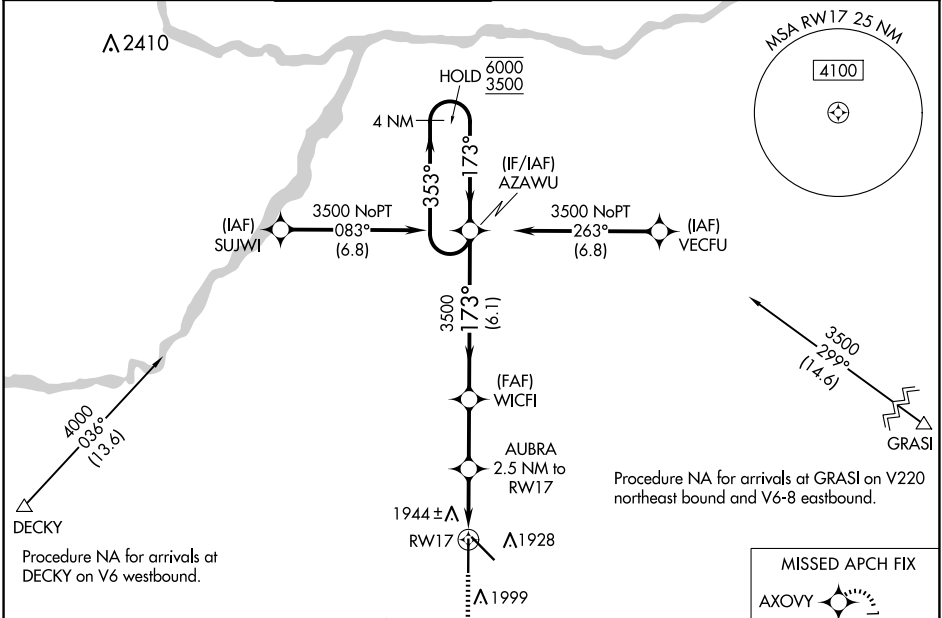


WAAS CH <b>60999</b> <b>W17A</b>	APP CRS <b>173°</b>	Rwy Idg TDZE <b>1844</b> Apt Elev <b>1847</b>	<b>7002</b> <b>1844</b> <b>1847</b>
--	------------------------	---	---

# RNAV (GPS) RWY 17

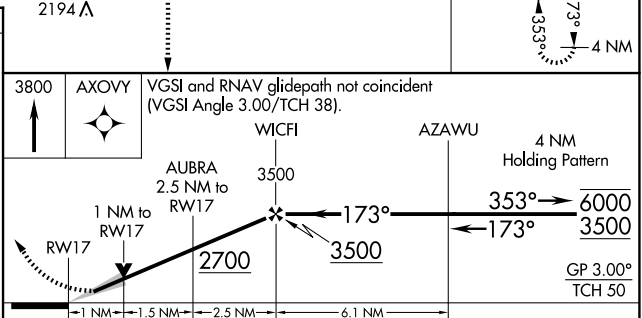
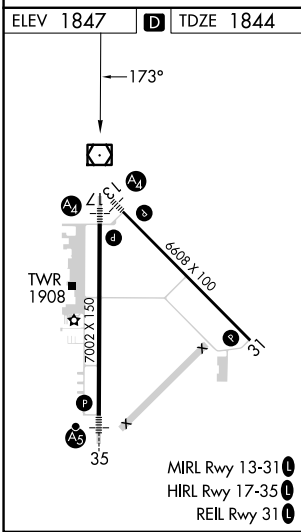
CENTRAL NEBRASKA RGNL (GRI)

RNP APCH - GPS.		MALSP		MISSED APPROACH: Climb to 3800 direct AXOVY and hold.		
<p>▼ Inop table does not apply to LPV. For uncompensated Baro-VNAV systems, LNAV/VNAV NA below -23°C or above 54°C. For inop ALS, increase LNAV/VNAV all Cats visibility to ½ SM.</p>		<p>⚠</p>				
ATIS <b>127.4</b>	MINNEAPOLIS CENTER <b>119.4 278.8</b>	GRAND ISLAND TOWER * <b>118.2 (CTAF) 0 259.3</b>	GND CON <b>121.9 259.3</b>	CLNC DEL <b>121.9</b>	CLNC DEL <b>126.05</b> (when twr closed)	UNICOM <b>122.95</b>



NC-2, 20 FEB 2025 to 20 MAR 2025

NC-2, 20 FEB 2025 to 20 MAR 2025



CATEGORY	A	B	C	D
LPV DA		2044-¾	200 (200-¾)	
LNAV/ VNAV DA		2125-¾	281 (300-¾)	
LNAV MDA		2200-¾	356 (400-¾)	
CIRCLING	2300-1	453 (500-1)	2400-1½ 553 (600-1½)	2560-2¼ 713 (800-2¼)