

WAAS CH <b>86799</b> <b>W35A</b>	APP CRS <b>353°</b>	Rwy Idg <b>7002</b> TDZE <b>1847</b> Apt Elev <b>1847</b>
--	------------------------	---


# RNAV (GPS) RWY 35

CENTRAL NEBRASKA RGNL (G.R.I)

RNP APCH - GPS.

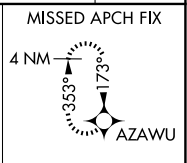
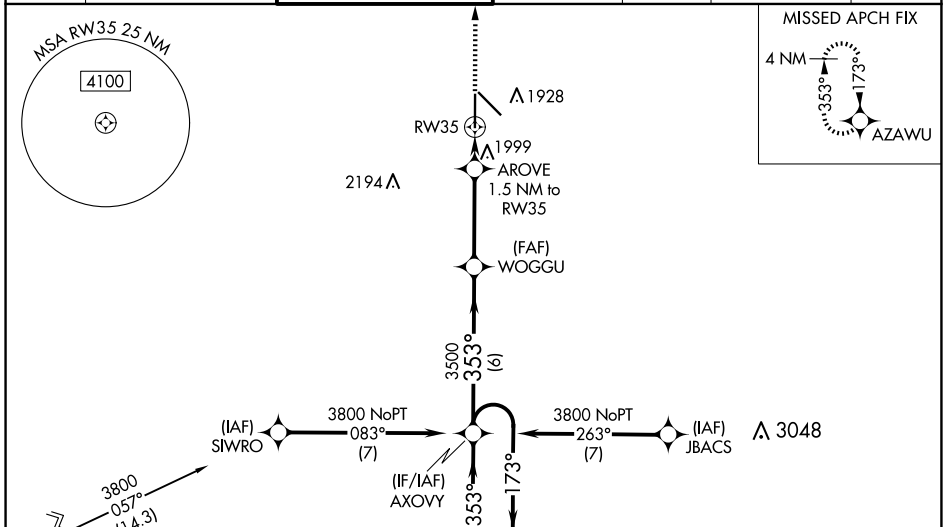
**▼** For uncompensated Baro-VNAV systems, LNAV/VNAV NA below -21°C or above 54°C.  
**▲** Baro-VNAV NA when using Aurora altimeter setting. Circling Rwy 13 and 17 NA at night.  
 For inop ALS, increase LNAV Cats C/D visibility to RVR 6000. When local altimeter setting not received, use Aurora altimeter setting and increase LPV DA to 2088 feet; increase LNAV/VNAV DA to 2328 feet and all visibilities to RVR 5000; increase all MDAs 60 feet and LNAV visibility Cats C/D to RVR 5000 and Circling visibility Cats C/D ¼ SM. For inop ALS when using Aurora altimeter setting, increase LNAV/VNAV all Cats visibility to 1 ¾ SM, increase LNAV Cats C/D visibility to 1 ¾ SM.

MALSRL

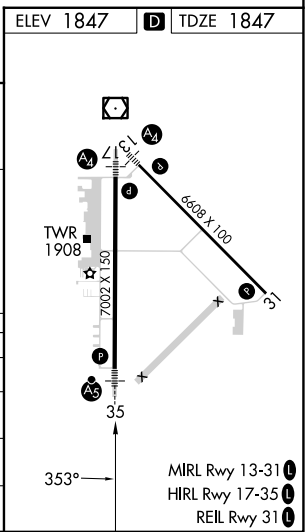
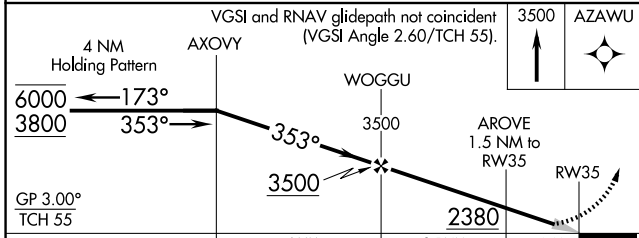


MISSED APPROACH:  
Climb to 3500 direct AZAWU and hold.

ATIS <b>127.4</b>	MINNEAPOLIS CENTER <b>119.4 278.8</b>	GRAND ISLAND TOWER * <b>118.2 (CTAF) 0 259.3</b>	GND CON <b>121.9 259.3</b>	CLNC DEL <b>121.9</b>	CLNC DEL <b>126.05</b> (when twr closed)	UNICOM <b>122.95</b>
----------------------	--	---	-------------------------------	--------------------------	--	-------------------------



ELEV 1847	D TDZE 1847
-----------	-------------



CATEGORY	A	B	C	D
LPV DA		2047/24	200 (200-½)	
LNAV/VNAV DA		2287/40	440 (500-¾)	
LNAV MDA	2260/24	413 (500-½)	2260/40	413 (500-¾)
CIRCLING	2300-1	453 (500-1)	2400-1½ 553 (600-1½)	2560-2¼ 713 (800-2¼)

NC-2, 20 FEB 2025 to 20 MAR 2025

NC-2, 20 FEB 2025 to 20 MAR 2025