

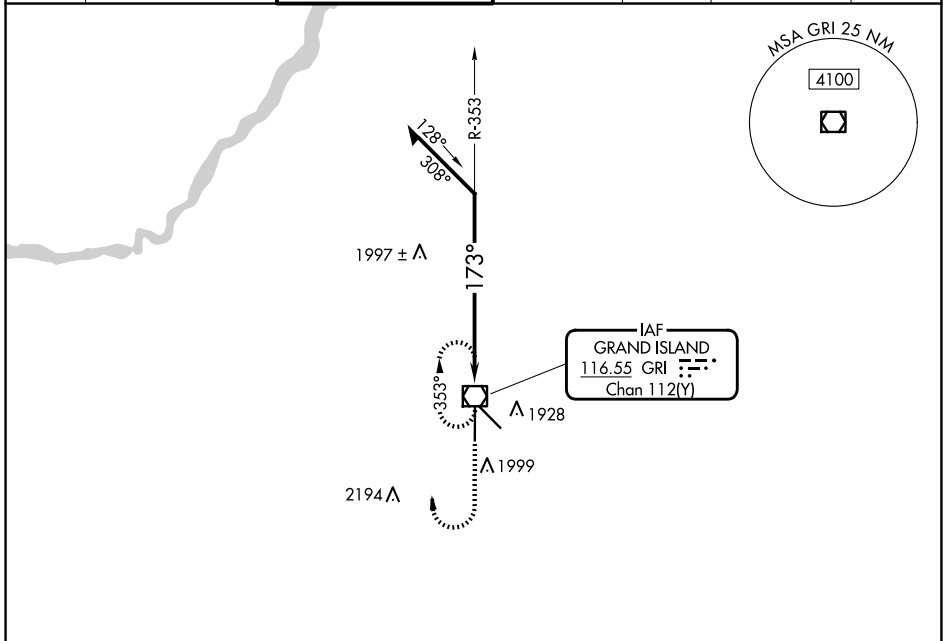
VOR/DME GRI 116.55 Chan 112(Y)	APP CRS 173°	Rwy Idg TDZE Apt Elev	7002 1844 1847
--	------------------------	-----------------------------	---

VOR RWY 17

CENTRAL NEBRASKA RGNL (GRI)

⚠ When local altimeter setting not received, use Aurora altimeter setting and increase all MDA 60 feet, increase S-17 Cats C/D and Circling Cats C/D visibility ¼ SM. Inop table does not apply to S-17 Cat C.	MALS 	MISSED APPROACH: Climb to 3600, then right turn direct GRI VOR/DME and hold.
---	----------	--

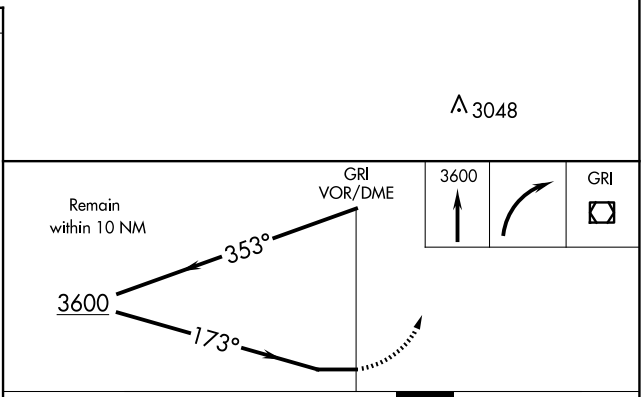
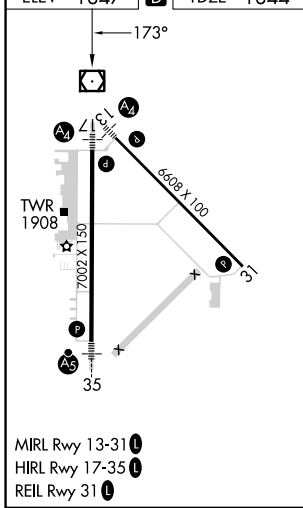
ATIS 127.4	MINNEAPOLIS CENTER 119.4 278.8	GRAND ISLAND TOWER * 118.2 (CTAF) 259.3	GND CON 121.9 259.3	CLNC DEL 121.9	CLNC DEL 126.05 (when twr closed)	UNICOM 122.95
----------------------	--	---	-------------------------------	--------------------------	--	-------------------------



NC-2, 20 FEB 2025 to 20 MAR 2025

NC-2, 20 FEB 2025 to 20 MAR 2025

ELEV 1847	D	TDZE 1844
-----------	----------	-----------



CATEGORY	A	B	C	D
S-17	2300-¾ 456 (500-¾)	456 (500-¾)	2300-1¼ 456 (500-1¼)	2300-1½ 456 (500-1½)
CIRCLING	2300-1 453 (500-1)	453 (500-1)	2400-1½ 553 (600-1½)	2560-2¼ 713 (800-2¼)