


VOR/DME GRI <b>116.55</b> Chan <b>112(Y)</b>	APP CRS <b>353°</b>	Rwy Idg <b>7002</b> TDZE <b>1847</b> Apt Elev <b>1847</b>
--	------------------------	---

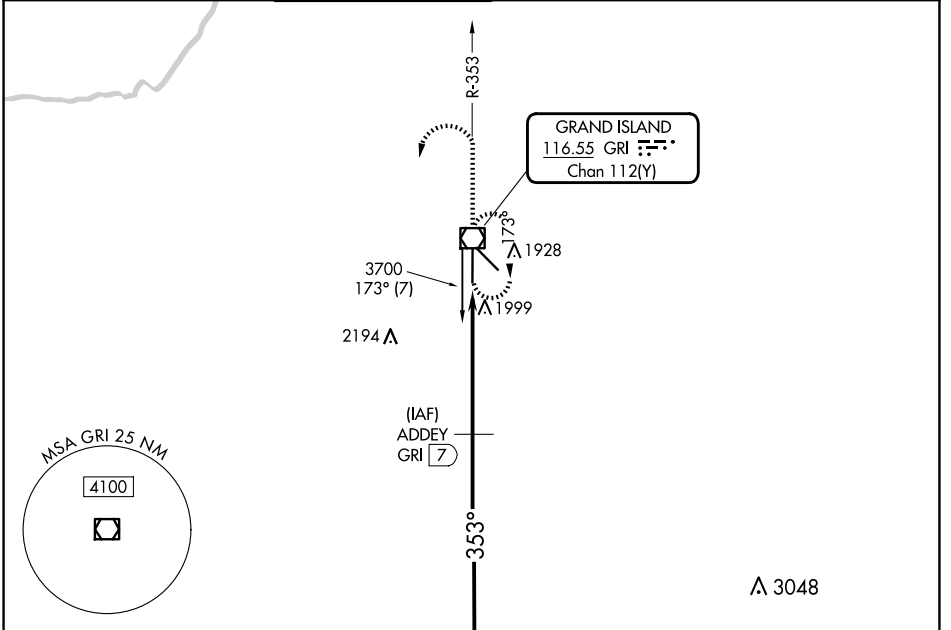
# VOR/DME RWY 35

CENTRAL NEBRASKA RGNL (GRI)

**⚠** VDP NA when using Aurora altimeter setting. When local altimeter setting not received, use Aurora altimeter setting and increase all MDA 60 feet, increase Circling Cats C/D visibility ¼ SM. For inop MALSRL, increase S-35 Cat D visibility to 1¼ mile.

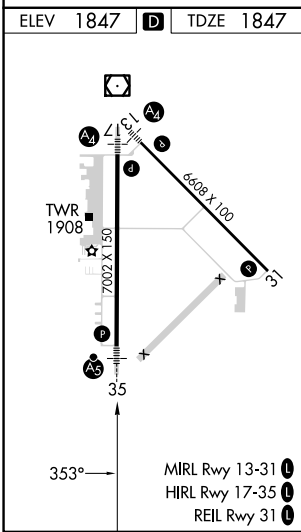
**MALSRL**  MISSED APPROACH: Climb to 2900, then climbing left turn to 3600 direct GRI VOR/DME and hold.


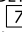
ATIS <b>127.4</b>	MINNEAPOLIS CENTER <b>119.4 278.8</b>	GRAND ISLAND TOWER* <b>118.2 (CTAF) 259.3</b>	GND CON <b>121.9 259.3</b>	CLNC DEL <b>121.9</b>	CLNC DEL <b>126.05</b> (when twr closed)	UNICOM <b>122.95</b>
----------------------	--	--	-------------------------------	--------------------------	--	-------------------------



NC-2, 20 FEB 2025 to 20 MAR 2025

NC-2, 20 FEB 2025 to 20 MAR 2025



2900 ↑	3600 ↙	GRI 	ADDEY GRI 	Remain within 10 NM
VGSI and descent angles not coincident (VGSI Angle 2.60/TCH 55).				
GRI 1.6	GRI 2.7	2.96° TCH 45	3600	3700
1.2	4.2 NM			
CATEGORY	A	B	C	D
S-35	2260-½	413 (500-½)	2260-¾ 413 (500-¾)	2260-1 413 (500-1)
CIRCLING	2300-1	453 (500-1)	2400-1½ 553 (600-1½)	2560-2¼ 713 (800-2¼)