

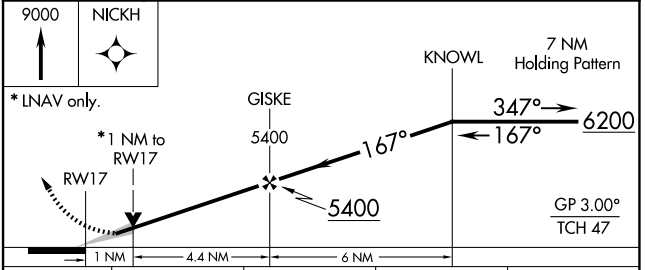
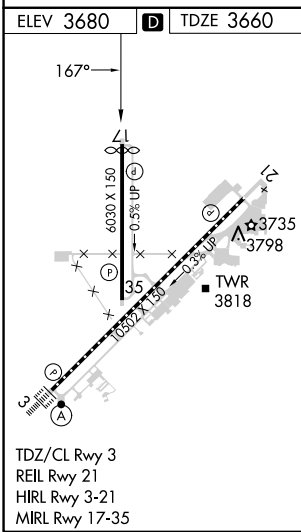
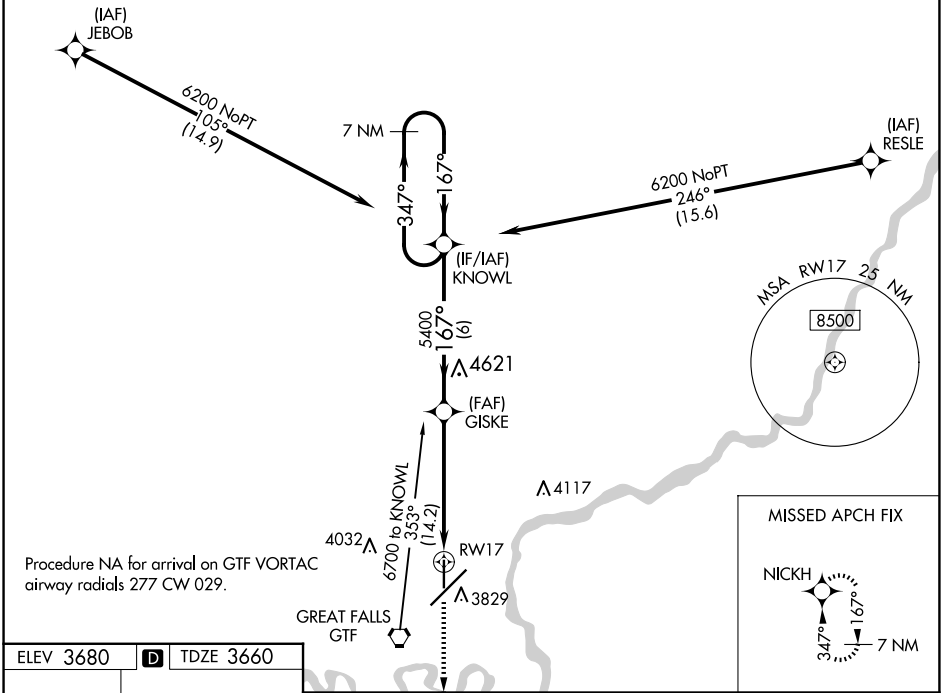
WAAS CH 49240 W17A	APP CRS 167°	Rwy Idg TDZE Apt Elev	5800 3660 3680
----------------------------------------	------------------------	-----------------------------	-------------------------------------------

RNAV (GPS) RWY 17

GREAT FALLS INTL (GTF)

RNP APCH - GPS.	MISSED APPROACH: Climb to 9000 direct NICKH and hold, continue climb-in-hold to 9000.
▼ For uncompensated Baro-VNAV systems, LNAV/VNAV NA below -26°C or above 52°C.	

ATIS 126.6 269.0	GREAT FALLS APP CON 128.6 379.175	GREAT FALLS TOWER 118.7 282.2	GND CON 121.7 348.6	CLNC DEL 121.7 348.6
----------------------------	---------------------------------------------	-----------------------------------------	-------------------------------	--------------------------------



CATEGORY	A	B	C	D
LPV DA		3910-3/4	250 (300-3/4)	
LNAV/VNAV DA		3910-3/4	250 (300-3/4)	
LNAV MDA		4000-1	340 (400-1)	
C CIRCLING	4140-1	460 (500-1)	4340-1 3/4 660 (700-1 3/4)	4420-2 1/4 740 (800-2 1/4)

NW-1, 20 FEB 2025 to 20 MAR 2025

NW-1, 20 FEB 2025 to 20 MAR 2025