

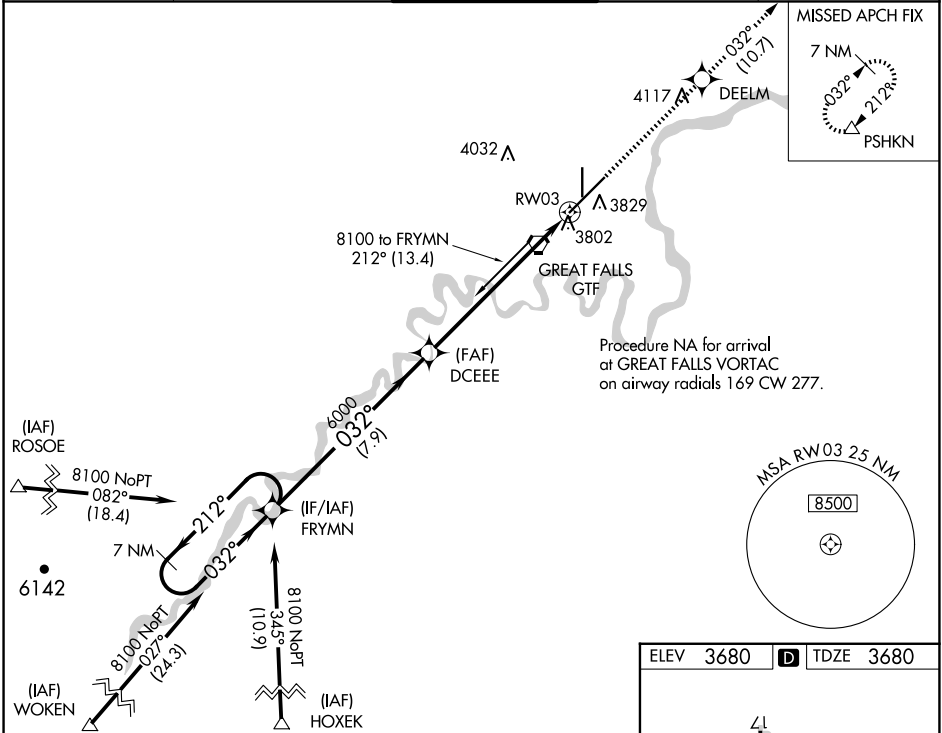
WAAS CH <b>70602</b> <b>W03A</b>	APP CRS <b>032°</b>	Rwy Idg <b>10502</b> TDZE <b>3680</b> Apt Elev <b>3680</b>
--	------------------------	--

# RNAV (GPS) Y RWY 3

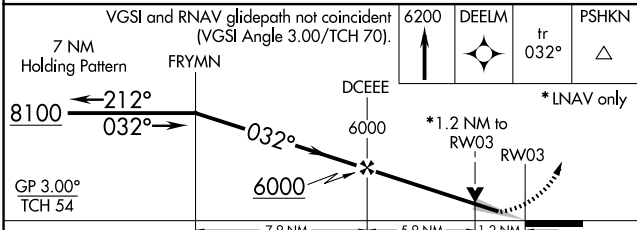
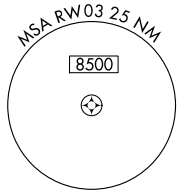
GREAT FALLS INTL (GTF)

RNP APCH - GPS.	ALSF-2	MISSED APPROACH: Climb to 6200 direct DEELM and on track 032° to PSHKN and hold.
<p>▼ For uncompensated Baro-VNAV systems, LNAV/VNAV NA below -25°C or above 50°C. For inop ALS, increase LNAV/VNAV all Cats visibility to RVR 4500.</p>		

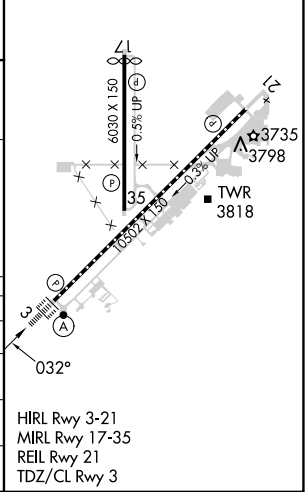
ATIS <b>126.6 269.0</b>	GREAT FALLS APP CON <b>128.6 379.175</b>	GREAT FALLS TOWER <b>118.7 282.2</b>	GND CON <b>121.7 348.6</b>	CLNC DEL <b>121.7 348.6</b>
----------------------------	---	---	-------------------------------	--------------------------------



Procedure NA for arrival at GREAT FALLS VORTAC on airway radials 169 CW 277.



ELEV 3680	<b>D</b> TDZE 3680
-----------	--------------------



CATEGORY	A	B	C	D
LPV DA	3880/18		200 (200-½)	
LNAV/VNAV DA	3963/24		283 (300-½)	
LNAV MDA	4140/24 460 (500-½)		4140/45 460 (500-¾)	
<b>C</b> CIRCLING	4140-1 460 (500-1)		4340-1¾ 660 (700-1¾) 4420-2¼ 740 (800-2¼)	

NW-1, 20 FEB 2025 to 20 MAR 2025

NW-1, 20 FEB 2025 to 20 MAR 2025