

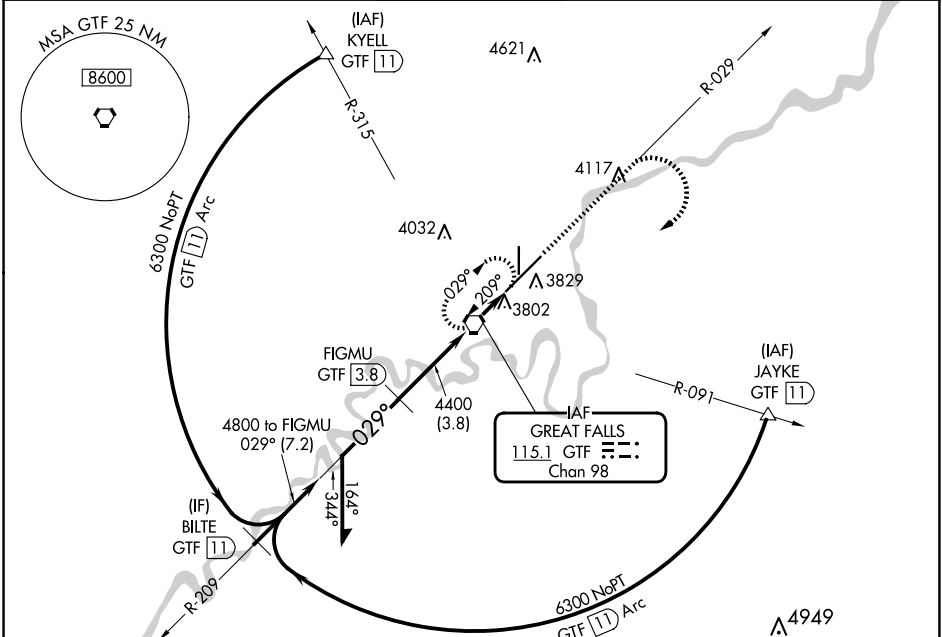
VORTAC GTF 115.1 Chan 98	APP CRS 029°	Rwy Idg 10502 TDZE 3680 Apt Elev 3680
--	------------------------	--

VOR RWY 3

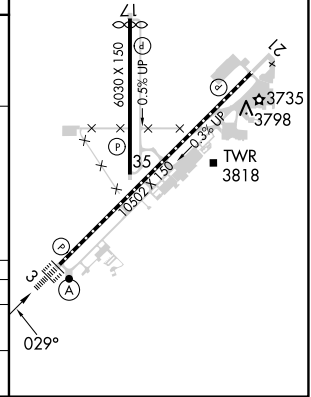
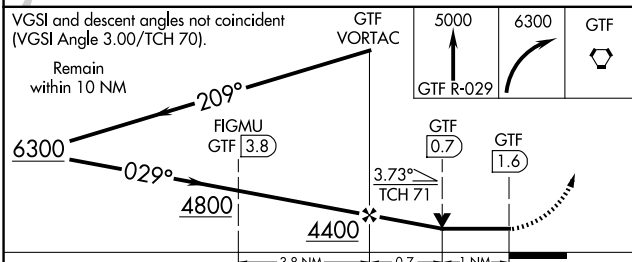
GREAT FALLS INTL (GTF)

DME required. ▼ For inoperative ALS, increase Cat C visibility to RVR 5500.	ALSIF-2 A	MISSED APPROACH: Climb to 5000 on GTF VORTAC R-029 then climbing right turn to 6300 direct GTF VORTAC and hold, continue climb-in-hold to 6300.
--	--------------	---

ATIS 126.6 269.0	GREAT FALLS APP CON 128.6 379.175	GREAT FALLS TOWER 118.7 282.2	GND CON 121.7 348.6	CLNC DEL 121.7 348.6
----------------------------	---	---	-------------------------------	--------------------------------



ELEV 3680	TDZE 3680
TDZ/CL Rwy 3 REIL Rwy 21 MIREL Rwy 17-35 HIRL Rwy 3-21	



CATEGORY	A	B	C	D
S-3	4060/24 380 (400-½)			NA
CIRCLING	4140-1	460 (500-1)	4320-1¾ 640 (700-1¾)	NA

NW-1, 20 FEB 2025 to 20 MAR 2025

NW-1, 20 FEB 2025 to 20 MAR 2025