

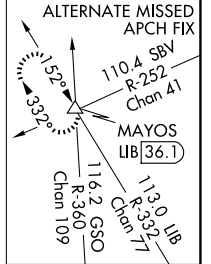
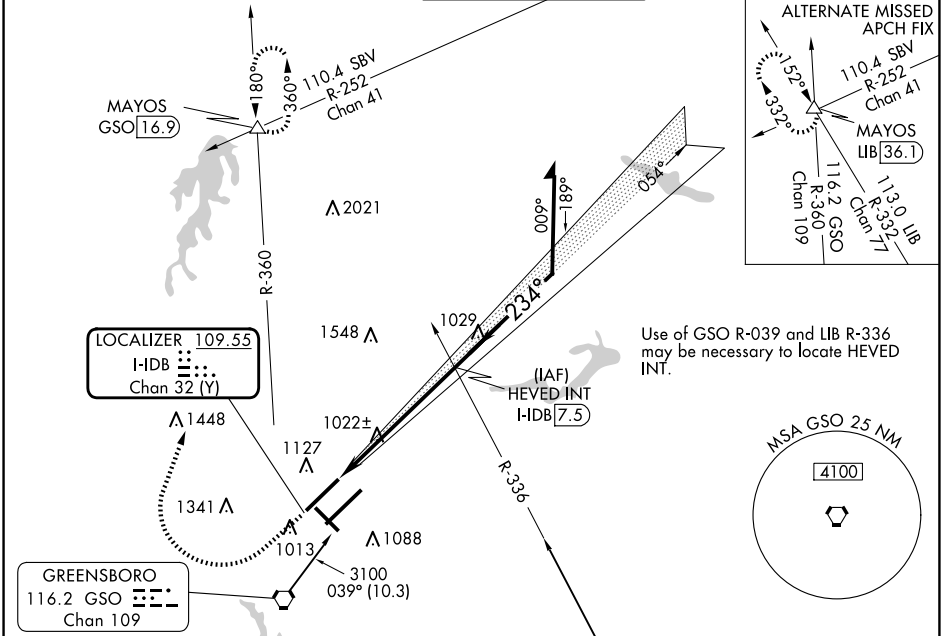
LOC/DME I-IDB 109.55 Chan 32 (Y)	APP CRS 234°	Rwy Idg TDZE 9000 864	Apt Elev 926
---	------------------------	---------------------------------	------------------------

ILS or LOC RWY 23R

PIEDMONT TRIAD INTL (GSO)

<p>Simultaneous approach authorized.</p>	<p>MALSR</p>	<p>MISSED APPROACH: Climb to 1500 then climbing right turn to 3100 on heading 015° and GSO VORTAC R-360 to MAYOS INT/GSO 16.9 DME and hold.</p>	
		<p>Use of GSO R-039 and LIB R-336 may be necessary to locate HEVED INT.</p>	

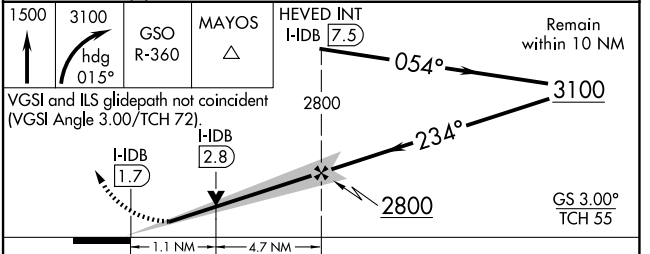
D-ATIS 128.55	GREENSBORO APP CON 124.35 269.225 (250°-049°) 126.6 327.075 (050°-249°)	GREENSBORO TOWER 119.1 290.325	GND CON 121.9 348.6	CLNC DEL 121.75
-------------------------	---	--	-------------------------------	---------------------------



SE-2, 20 FEB 2025 to 20 MAR 2025

SE-2, 20 FEB 2025 to 20 MAR 2025

ELEV 926	D	TDZE 864
----------	----------	----------



TDZ/CL Rws 5L, 23R and 23L
REIL Rwy 32
HIRL Rws 14-32, 5R-23L and 5L-23R
FAF to MAP 5.8 NM

Knots	60	90	120	150	180
Min:Sec	5:48	3:52	2:54	2:19	1:56

CATEGORY	A	B	C	D
S-ILS 23R	1064/18		200 (200-1/2)	
S-LOC 23R	1280/24	416 (400-1/2)	1280/40	416 (400-3/4)
CIRCLING	1440-1	514 (600-1)	1700-2 1/4 774 (800-2/4)	1700-2 1/2 774 (800-2/2)