

LOC/DME I-LZY 111.9 Chan 56	APP CRS 054°	Rwy Idg 10001 TDZE 900 Apt Elev 926
---	------------------------	--

ILS or LOC RWY 5R

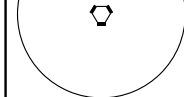
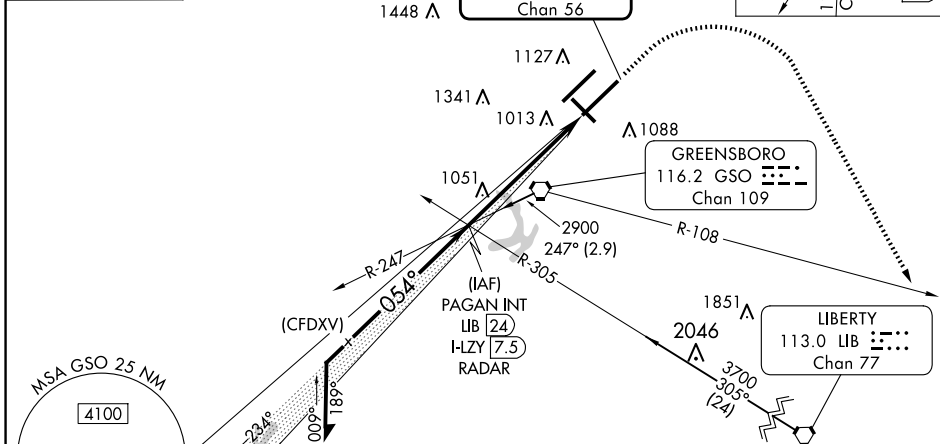
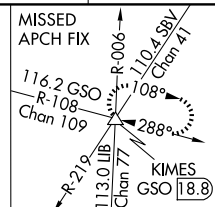
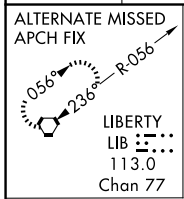
PIEDMONT TRIAD INTL (GSO)

Simultaneous approach authorized. For inop ALS, increase S-LOC 5R Cat C/D to RVR 6000.
****RVR 1800 authorized with the use of FD or AP or HUD to DA.**

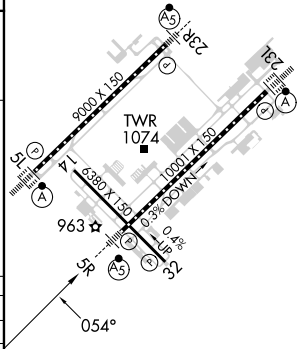
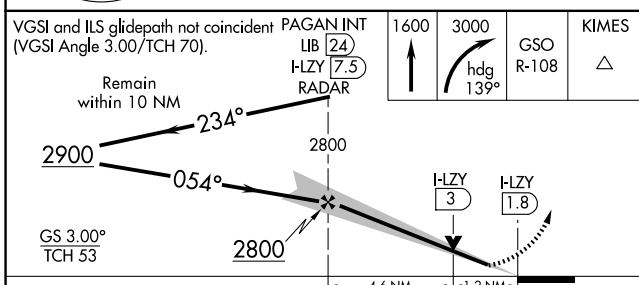


MISSED APPROACH: Climb to 1600 then climbing right turn to 3000 on heading 139° and GSO VORTAC R-108 to KIMES INT/GSO 18.8 DME and hold.

D-ATIS 128.55	GREENSBORO APP CON 124.35 269.225 (250°-049°) 126.6 327.075 (050°-249°)	GREENSBORO TOWER 119.1 290.325	GND CON 121.9 348.6	CLNC DEL 121.75
-------------------------	---	--	-------------------------------	---------------------------



ELEV 926	D TDZE 900
TDZ/CL Rwy 5L, 23R and 23L	
REIL Rwy 32	
HIRL Rwy 14-32, 5R-23L and 5L-23R	



CATEGORY	A	B	C	D
S-ILS 5R **		1100/24	200 (200-½)	
S-LOC 5R	1320/24	420 (400-½)	1320/40	420 (400-¾)
C CIRCLING	1440-1	514 (600-1)	1700-2¼ 774 (800-2¼)	1700-2½ 774 (800-2½)

FAF to MAP 5.7 NM

Knots	60	90	120	150	180
Min:Sec	5:42	3:48	2:51	2:17	1:54

SE-2, 20 FEB 2025 to 20 MAR 2025

SE-2, 20 FEB 2025 to 20 MAR 2025