

LOC/DME I-GFN 111.15 Chan 48 (Y)	APP CRS 325°	Rwy Idg TDZE Apt Elev 6380 902 926
---	------------------------	--

ILS Y or LOC Y RWY 32

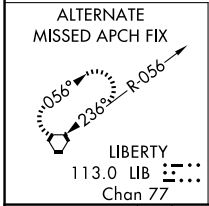
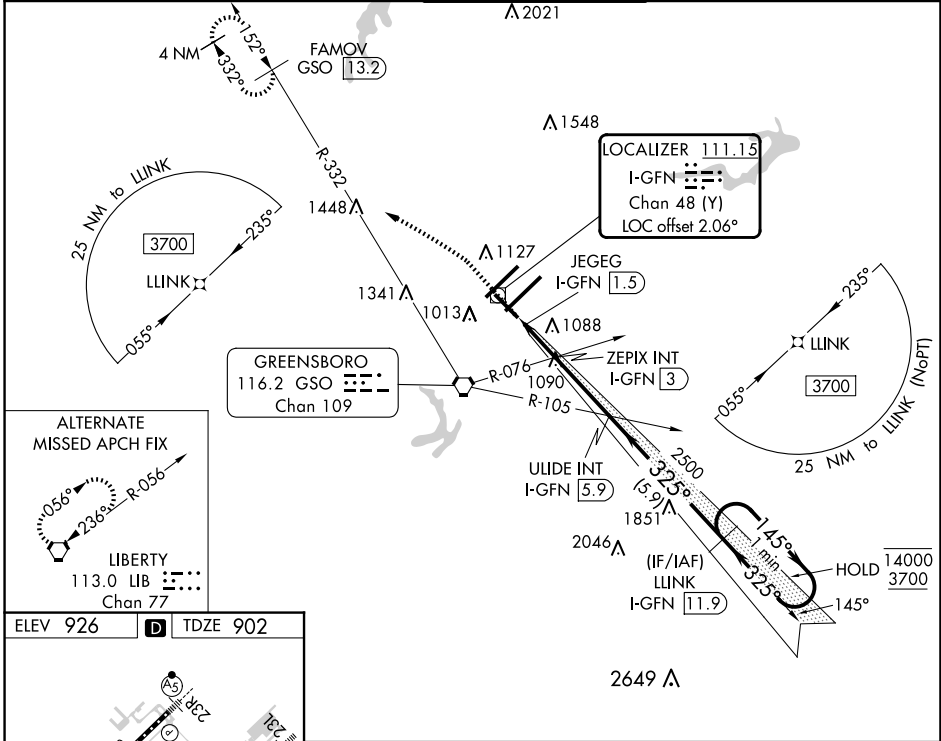
PIEDMONT TRIAD INTL (GSO)

RNAV 1-GPS or RADAR required for procedure entry.
DME required.

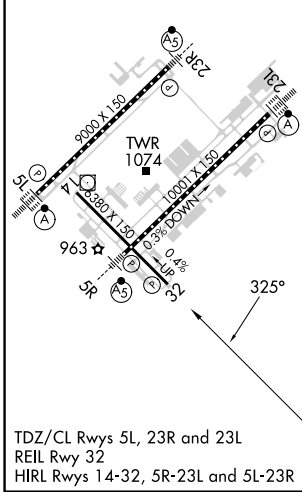
▼
▲ Rwy 32 helicopter visibility reduction below 3/4 SM NA.

MISSED APPROACH: Climb to 1400 then climbing left turn to 3700 on heading 307° and GSO VORTAC R-332 to FAMOV/GSO 13.2 DME and hold.

D-ATIS 128.55	GREENSBORO APP CON 124.35 269.225 126.6 327.075 (050°-249°)	GREENSBORO TOWER 119.1 290.325	GND CON 121.9 348.6	CLNC DEL 121.75
-------------------------	---	--	-------------------------------	---------------------------



ELEV 926	D	TDZE 902
----------	----------	----------



1400	3700	GSO R-332	FAMOV GSO 13.2	ULIDE INT I-GFN 5.9	LLINK I-GFN 11.9	One Minute Holding Pattern
hdg 307°						
		JEGEG I-GFN 1.5	ZEPIX INT I-GFN 3	2500	145°	4000
					325°	3700
						GS 3.00° TCH 53
CATEGORY	A	B	C	D		
S-ILS 32		1152-3/4	250 (300-3/4)			
S-LOC 32	1400-1	498 (500-1)		1400-13/8	498 (500-13/8)	
C CIRCLING	1440-1	514 (600-1)		1700-2 1/4	1700-2 1/2	774 (800-2 1/2)

SE-2, 20 FEB 2025 to 20 MAR 2025

SE-2, 20 FEB 2025 to 20 MAR 2025