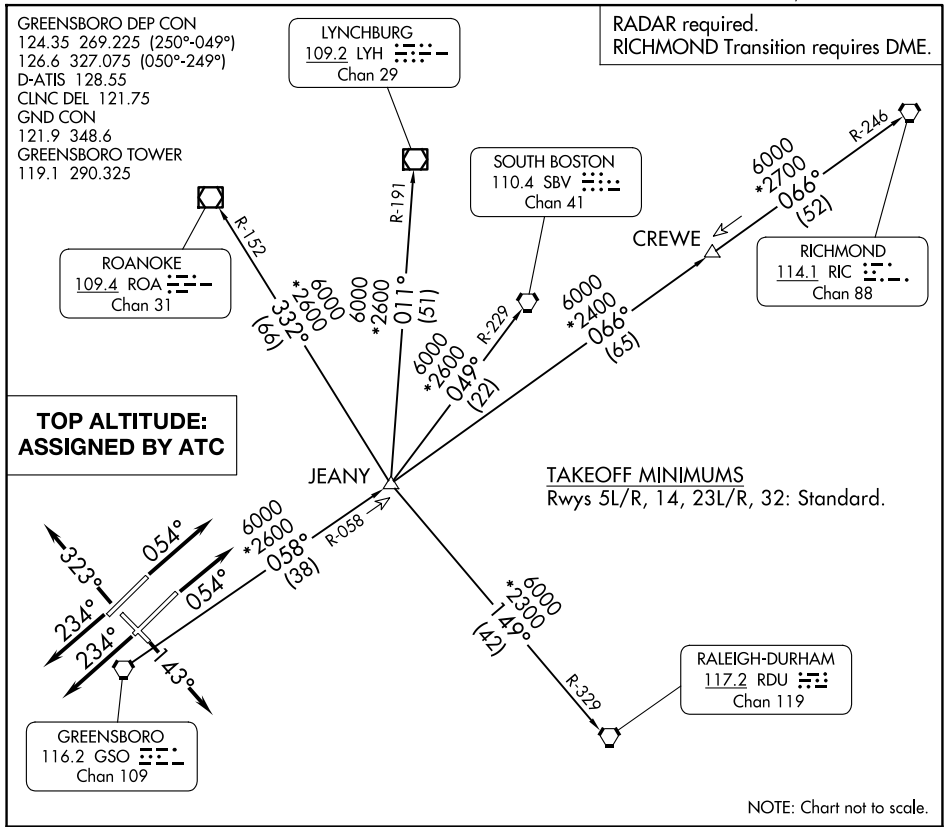


# QUAKER EIGHT DEPARTURE



SE-2, 20 FEB 2025 to 20 MAR 2025

SE-2, 20 FEB 2025 to 20 MAR 2025

**DEPARTURE ROUTE DESCRIPTION**

TAKEOFF RUNWAYS 5L/R: Climb on heading 054°, thence. . . .

TAKEOFF RUNWAY 14: Climb on heading 143°, thence. . . .

TAKEOFF RUNWAYS 23L/R: Climb on heading 234°, thence. . . .

TAKEOFF RUNWAY 32: Climb on heading 323°, thence. . . .

. . . .maintain altitude assigned by ATC. RADAR vectors will be provided to intercept assigned radial associated with the issued transition, or if no transition assigned, RADAR vectors will be provided to the appropriate fix. Expect requested altitude/flight level 10 minutes after departure.

LYNCHBURG TRANSITION (QUAK8.LYH): From over GSO VORTAC on GSO R-058 to JEANY then on LYH R-191 to LYH VOR/DME.

RALEIGH/DURHAM TRANSITION (QUAK8.RDU): From over GSO VORTAC on GSO R-058 to JEANY then on RDU R-329 to RDU VORTAC.

RICHMOND TRANSITION (QUAK8.RIC): From over GSO VORTAC on GSO R-058 to JEANY then on GSO R-058 and RIC R-246 to CREWE then on RIC R-246 to RIC VORTAC.

ROANOKE TRANSITION (QUAK8.ROA): From over GSO VORTAC on GSO R-058 to JEANY then on ROA R-152 to ROA VOR/DME.

SOUTH BOSTON TRANSITION (QUAK8.SBV): From over GSO VORTAC on GSO R-058 to JEANY then on SBV R-229 to SBV VORTAC.