

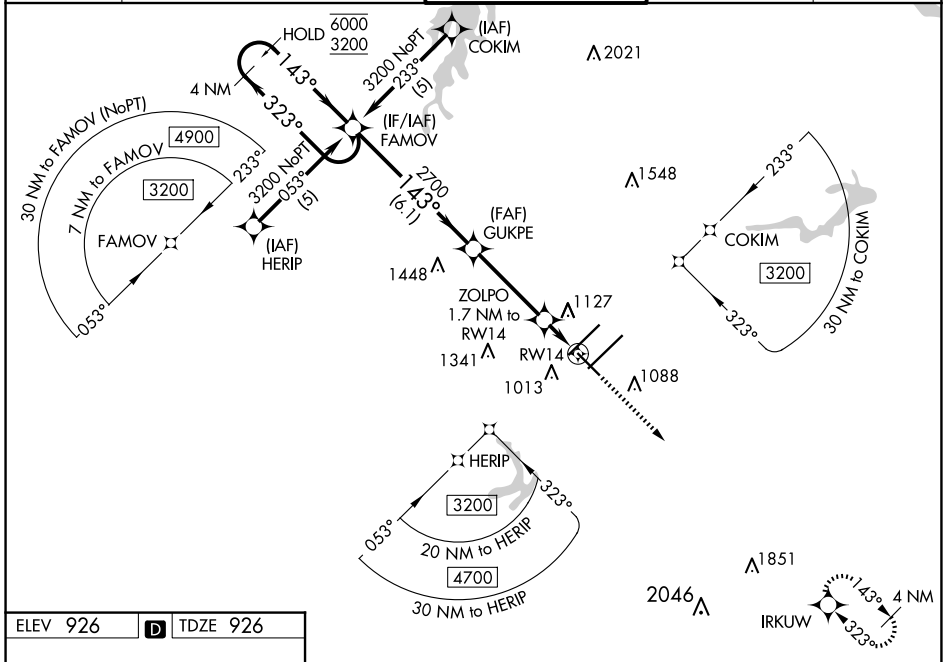
WAAS CH <b>93919</b>	APP CRS <b>143°</b>	Rwy Idg TDZE Apt Elev	<b>6380</b> <b>926</b> <b>926</b>
-------------------------	------------------------	-----------------------------	---

# RNAV (GPS) RWY 14

PIEDMONT TRIAD INTL (GSO)

RNP APCH - GPS.		MISSED APPROACH: Climb to 3700 direct IRKUW and hold, continue climb-in-hold to 3700.		
For uncompensated Baro-VNAV systems, LNAV/VNAV NA below -7°C or above 54°C.				

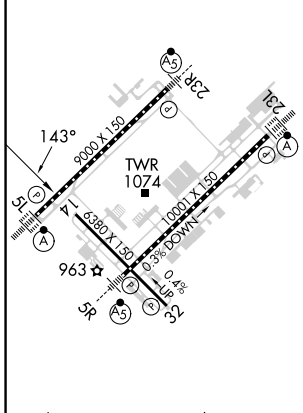
D-ATIS <b>128.55</b>	GREENSBORO APP CON <b>124.35 269.225</b> <b>126.6 327.075</b> (050°-249°)	GREENSBORO TOWER <b>119.1 290.325</b>	GND CON <b>121.9 348.6</b>	CLNC DEL <b>121.75</b>
-------------------------	---	--	-------------------------------	---------------------------



SE-2, 20 FEB 2025 to 20 MAR 2025

SE-2, 20 FEB 2025 to 20 MAR 2025

ELEV 926	<b>D</b>	TDZE 926
----------	----------	----------



TDZ/CL Rwy 5L, 23R and 23L  
REIL Rwy 32  
HIRL All Rwy

4 NM Holding Pattern FAMOV	3700 IRKUW			
6000 ← 323°	3200 → 143°			
GP 3.00°	TCH 59			
2700	2700			
1520	1520			
1.7 NM to RW14	1.2 NM to RW14			
6.1 NM	3.6 NM			
0.5	1.2			
CATEGORY	A	B	C	D
LPV DA	1126-3/4		200 (200-3/4)	
LNAV/VNAV DA	1424-1 3/8		498 (500-1 3/8)	
LNAV MDA	1360-1	434 (500-1)	1360-1 1/4	434 (500-1 1/4)
<b>C</b> CIRCLING	1440-1	514 (600-1)	1700-2 1/4	1700-2 1/2
			774 (800-2 1/4)	774 (800-2 1/2)