

WAAS CH <b>69526</b> <b>W05A</b>	APP CRS <b>053°</b>	Rwy ldg TDZE Apt Elev	<b>5011</b> <b>149</b> <b>162</b>
--	------------------------	-----------------------------	---

# RNAV (GPS) RWY 5

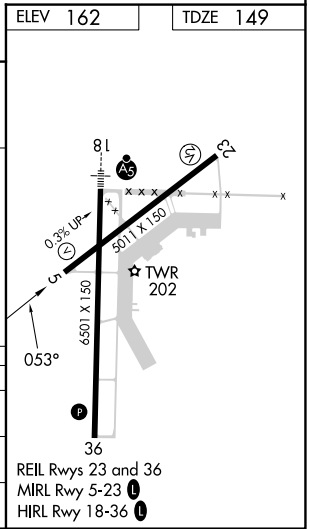
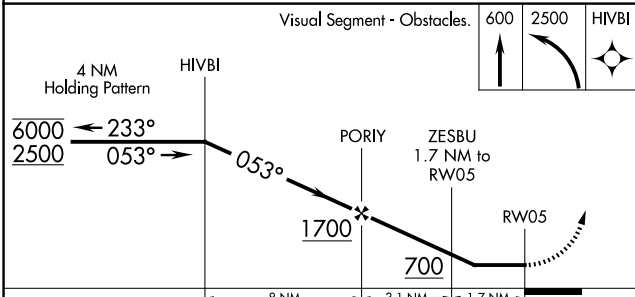
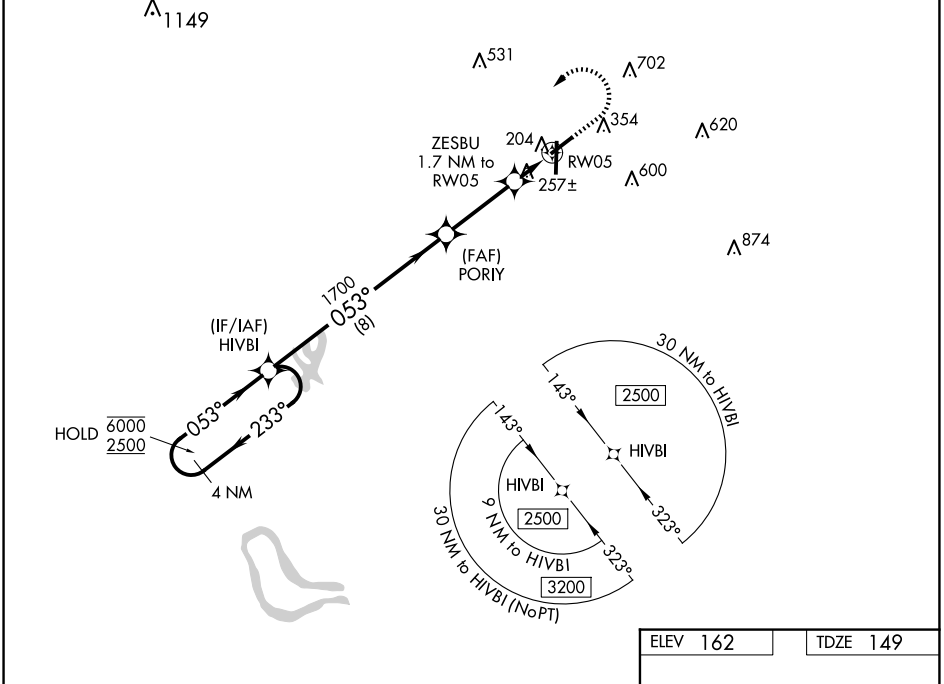
GREENWOOD-LEFLORE (GWO)

RNP APCH - GPS.

**▼** Rwy 5 helicopter visibility reduction below 1 SM NA. When local altimeter setting not received, use Greenville altimeter setting and increase all MDAs 120 feet and visibility LP Cat C/D 3/8 SM, LNAV Cat C/D 1/4 SM and Circling Cat C 1/2 SM. Straight-in Rwy 5 NA at night, Circling Rwy 5, 23 NA at night.

**MISSED APPROACH:** Climb to 600 then climbing left turn to 2500 direct HIVBI and hold.

ASOS <b>119.975</b>	MEMPHIS CENTER <b>132.5 259.1</b>	<b>GREENWOOD TOWER *</b> <b>118.35 (CTAF) 0 367.6</b>	GND CON <b>125.55 373.4</b>	CLNC DEL <b>125.55</b>	UNICOM <b>122.95</b>
------------------------	--------------------------------------	--	--------------------------------	---------------------------	-------------------------



CATEGORY	A	B	C	D
LP MDA	520-1 371 (400-1)			
LNAV MDA	540-1	391 (400-1)	540-1 1/8	391 (400-1 1/8)
<b>C</b> CIRCLING	760-1	598 (600-1)	1000-2 1/2 838 (900-2 1/2)	1120-3 958 (1000-3)