

TOLEDO, OHIO

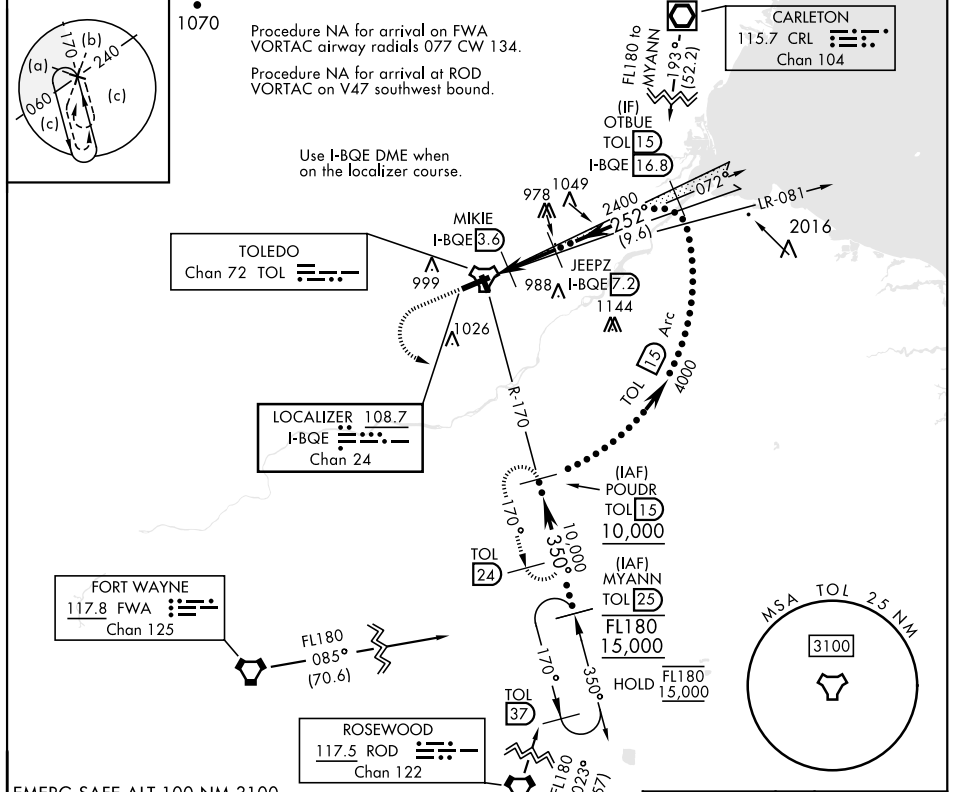
HI-ILS Y or LOC Y RWY 25

LOC/DME I-BQE 108.7 Chan 24	APCH CRS 252°	Rwy ldg 10,599 TDZE 678 Arpt Elev 684	[USAF]	EUGENE F KRANZ TOLEDO EXPRESS (KTOL)
---	-------------------------	--	--------	--------------------------------------

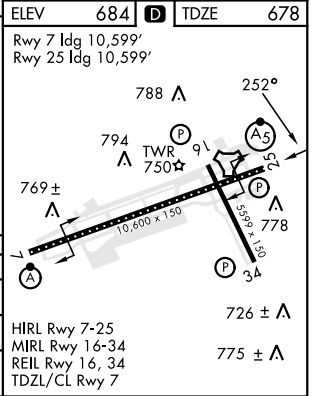
DME required
 * When ALS inop, increase vis to 1½ miles.

MALSRS (A5)
 MISSED APPROACH: Climb to 2500 then climbing left turn to 3000 on TOL R-170 to POUDR (TOL R-170/1.5 DME) and hold.

ATIS 118.75 290.225	TOLEDO APP CON 126.1 317.55	TOLEDO TOWER 118.1 285.4	GND CON 121.9 348.6	CLNC DEL 121.75 348.6	ASR
-------------------------------	---------------------------------------	------------------------------------	-------------------------------	---------------------------------	-----



EMERG SAFE ALT 100 NM 3100	2500 ↑	3000 TOL R-170	POUDR TOL 15	VGSI and ILS glidepath not coincident (VGSI Angle 3.00/TCH 69). TOL 15 I-BQE 16.8	OTBUE TOL 15 I-BQE 16.8	TDZE 678
				JEEPZ I-BQE 7.2		
				MIKIE I-BQE 3.6		
				JEVRI I-BQE 2.4		
					GS 3.00° TCH 52	
CATEGORY	C	D	E			
S-ILS 25	945/20	267	(300-½)			
S-LOC 25 *	1200/55	522	(600-1)			
CIRCLING	1300-1¾ 616 (700-1¾)	1360-2¼ 676 (700-2¼)	1360-2½ 676 (700-2½)			



TOLEDO, OHIO 41° 35'N-83° 48'W EUGENE F KRANZ TOLEDO EXPRESS (KTOL)
 Amdt 6C 23JAN25

HI-ILS Y or LOC Y RWY 25

EC-2, 20 FEB 2025 to 20 MAR 2025

EC-2, 20 FEB 2025 to 20 MAR 2025