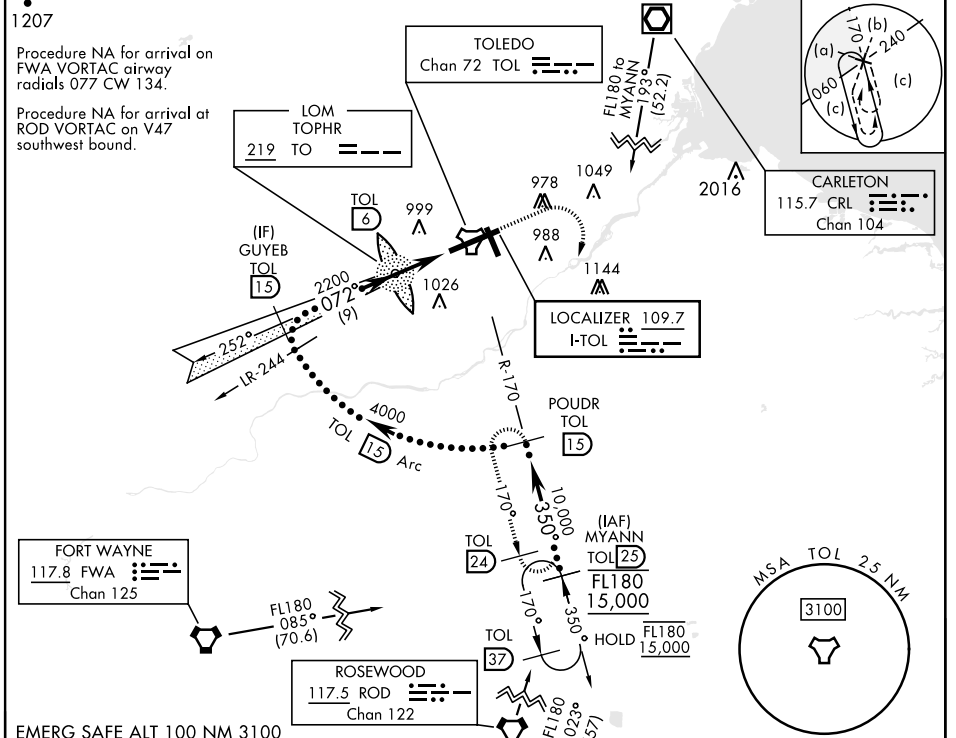


# HI-ILS Y or LOC Y RWY 7

LOC I-TOL <b>109.7</b>	APCH CRS <b>072°</b>	Rwy ldg <b>10,599</b> TDZE <b>683</b> Arpt Elev <b>684</b>	[USAF]	EUGENE F KRANZ TOLEDO EXPRESS (KTOL)
---------------------------	-------------------------	--	--------	--------------------------------------

DME required	ALSIF-2	MISSED APPROACH: Climb to 2500, then climbing right turn to 3000 on TOL TACAN R-170 to POUDR/15 DME and hold.
<p>*When ALS inop, increase CAT E RVR to 40, vis to 3/4 mile.</p> <p>**When ALS inop, increase CAT E RVR to 60, vis to 1 1/4 miles.</p>		

ATIS <b>118.75 290.225</b>	TOLEDO APP CON <b>126.1 317.55</b>	TOLEDO TOWER <b>118.1 285.4</b>	GND CON <b>121.9 348.6</b>	CLNC DEL <b>121.75 348.6</b>	ASR
-------------------------------	---------------------------------------	------------------------------------	-------------------------------	---------------------------------	-----



EMERG SAFE ALT 100 NM 3100			ELEV 684	TDZE 683
<p>GUYEB TOL 15</p> <p>4000</p> <p>072°</p> <p>2200</p> <p>LOM TOL 6</p> <p>2162</p> <p>TOL 2.7</p> <p>TOL 1.6</p> <p>4.4 NM</p>			<p>2500</p> <p>3000</p> <p>POUDR TOL 15</p>	<p>794 TWR 750</p> <p>91</p> <p>725</p> <p>778</p> <p>34</p> <p>726 ± A</p> <p>775 ± A</p>
GS 3.00°				
TCH 59				
CATEGORY	C	D	E	
S-ILS 7 *	886/18	203 (300-1/2)		
S-LOC 7 **	1140/45	457 (500-7/8)		
CIRCLING	1300-1 3/4 616 (700-1 3/4)	1400-2 1/4 716 (800-2 1/4)	1400-2 1/2 716 (800-2 1/2)	<p>HIRL Rwy 7-25</p> <p>MIRL Rwy 16-34</p> <p>REIL Rwy 16, 34</p> <p>TDZL/CL Rwy 7</p> <p>Rwy 7 ldg 10,599'</p> <p>Rwy 25 ldg 10,599'</p>

# HI-ILS Y or LOC Y RWY 7

EC-2, 20 FEB 2025 to 20 MAR 2025

EC-2, 20 FEB 2025 to 20 MAR 2025