

HI-TACAN RWY 7

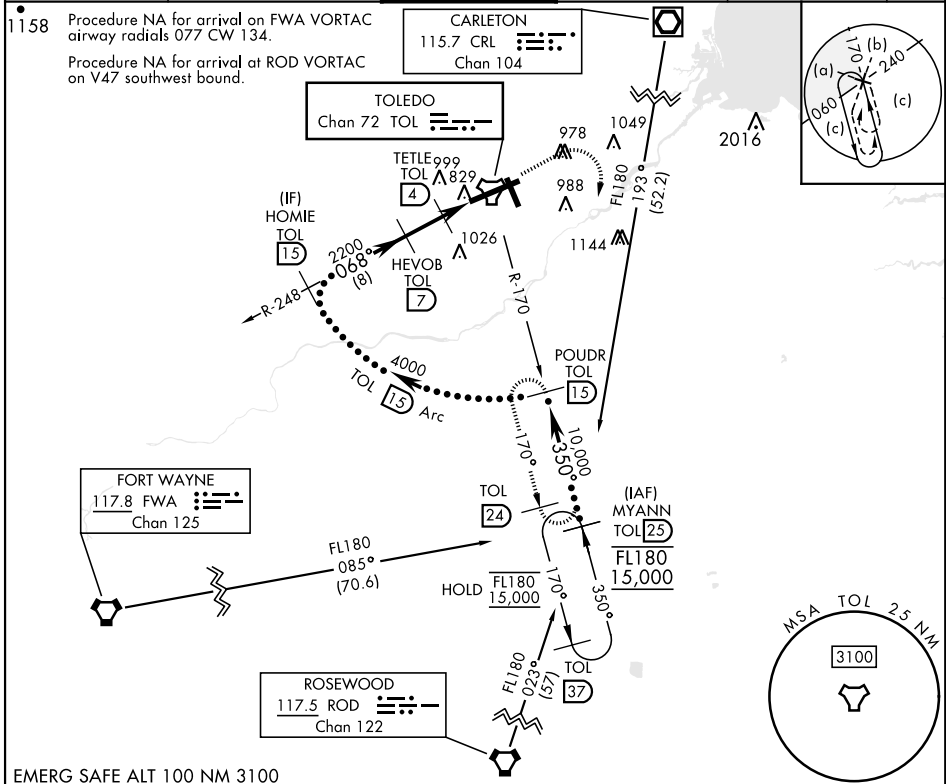
TACAN TOL Chan 72	APCH CRS 068°	Rwy ldg 10,599 TDZE 683 Arprt Elev 684
-----------------------------	-------------------------	---

[USAF]

EUGENE F KRANZ TOLEDO EXPRESS (KTOL)

<p>V * When ALS inop, increase CAT E vis to 1$\frac{1}{2}$ mile.</p>	<p>ALS-F-2</p>	<p>MISSED APPROACH: Climb to 3000 then right turn on TOL TACAN R-170 to POWDR/15 DME and hold.</p>
--	----------------	--

<p>ATIS 118.75 290.225</p>	<p>TOLEDO APP CON 126.1 317.55</p>	<p>TOLEDO TOWER 118.1 285.4</p>	<p>GND CON 121.9 348.6</p>	<p>CLNC DEL 121.75 348.6</p>	<p>ASR</p>
---------------------------------------	---	--	---------------------------------------	---	------------



EMERG SAFE ALT 100 NM 3100

	<p>POWDR TOL 15</p>	<p>ELEV 684 TDZE 683</p>
<p>HOME TOL 15</p>	<p>HEVOB TOL 7</p>	<p>TETLE TOL 4</p>
<p>TOL 29</p>	<p>TOL 13</p>	<p>TOL TACAN</p>
<p>CATEGORY C</p>	<p>D</p>	<p>E</p>
<p>S-7 * 1140/45</p>	<p>457 (500-7%)</p>	<p>HIRL Rwy 7-25 MIRL Rwy 16-34 REIL Rwy 16, 34 TDZL/CL Rwy 7</p>
<p>CIRCLING 1360-2 676 (700-2)</p>	<p>1400-2 1/4 716 (800-2 1/4)</p>	<p>1400-2 1/2 716 (800-2 1/2)</p>

HI-TACAN RWY 7

EC-2, 20 FEB 2025 to 20 MAR 2025

EC-2, 20 FEB 2025 to 20 MAR 2025