

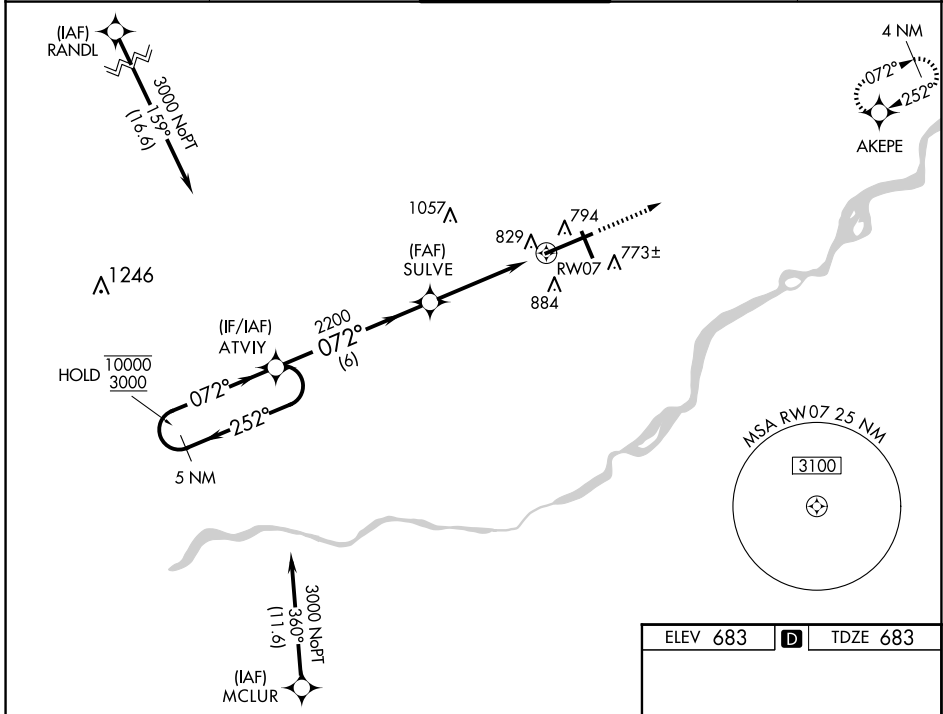
WAAS CH 99399 W07A	APP CRS 072°	Rwy Idg TDZE Apt Elev	10599 683 683
--	------------------------	-----------------------------	--

RNAV (GPS) RWY 7

EUGENE F KRANZ TOLEDO EXPRESS (TOL)

RNP APCH.	ALSF-2	MISSED APPROACH: Climb to 3000 direct AKEPE and hold.
<p>T For uncompensated Baro-VNAV systems, LNAV/VNAV NA below -17°C or above 52°C.</p> <p>A For inop ALS, increase LPV all Cats visibility to RVR 5000. Increase LNAV/VNAV Cat E and LNAV Cat E visibility to 1½ SM.</p> <p>ASR</p>		

ATIS 118.75 290.225	TOLEDO APP CON 134.35 317.55	TOLEDO TOWER 118.1 285.4	GND CON 121.9 348.6	CLNC DEL 121.75 348.6
-------------------------------	--	------------------------------------	-------------------------------	---------------------------------



5 NM Holding Pattern		<table border="1"> <tr> <td>3000</td> <td>↑</td> </tr> <tr> <td>AKEPE</td> <td>✧</td> </tr> </table>		3000	↑	AKEPE	✧
3000	↑						
AKEPE	✧						
<p>10000 ← 252°</p> <p>3000 → 072°</p> <p>GP 3.00°</p> <p>TCH 55</p>	<p>ATVIY</p> <p>SULVE 2200</p> <p>RW07</p> <p>*LNAV only.</p> <p>*1.3 NM to RW07</p>						
CATEGORY	A	B	C	D	E		
LPV DA	1018/40 335 (400-¾)						
LNAV/VNAV DA	1129/50 446 (500-1)						
LNAV MDA	1140/24	457 (500-½)	1140/40 457 (500-¾)	1140/50	457 (500-1)		
C CIRCLING	1200-1	517 (600-1)	1300-1¾ 617 (700-1¾)	1360-2¼ 677 (700-2¼)	1360-2½ 677 (700-2½)		

ELEV 683	D	TDZE 683
<p>TDZ/CL Rwy 7</p> <p>HIRL Rwy 7-25</p> <p>MIRL Rwy 16-34</p> <p>REIL Rws 16 and 34</p>		

EC-2, 20 FEB 2025 to 20 MAR 2025

EC-2, 20 FEB 2025 to 20 MAR 2025