

HI-ILS or LOC Z RWY 8

LOC I-LFI 109.9	APCH CRS 078°	Rwy Ildg 10,002	TDZE 8	Arprt Elev 8
---------------------------	-------------------------	--------------------	-----------	-----------------

[USAF]

LANGLEY AFB (KLFJ)

RADAR or DME required.

- ▲ * When ALS inop, increase RVR to 40 and vis to 3/8 mile.
- ** When ALS inop, increase vis to 1 3/8 miles.
- *** Circling S of Rwy 8-26 not authorized.

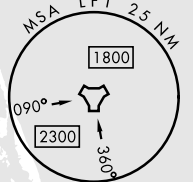
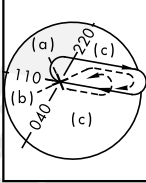
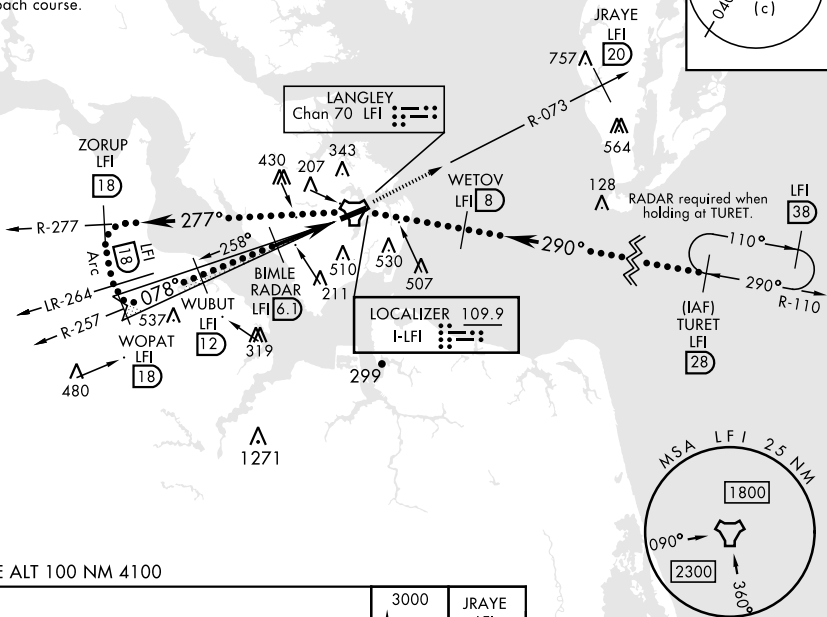


MISSED APPROACH: Climb to 3000 via LFI R-073 to 20 DME (JRAYE), then as instructed by ATC.

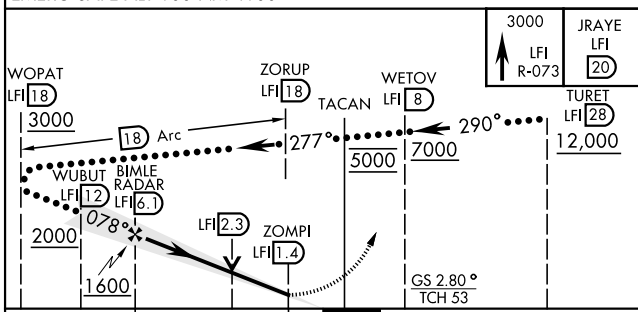
ATIS ★ 270.1	NORFOLK APP CON 125.7 335.625	TOWER ★ 125.0 253.5	GND CON 121.7 275.8	CLNC DEL 118.85 257.625
------------------------	---	-------------------------------	-------------------------------	-----------------------------------

Glideslope unusable for coupled approach below 750' MSL.

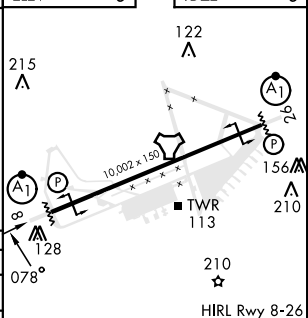
Expect RADAR vectors to IAF or Final Approach course.



EMERG SAFE ALT 100 NM 4100



ELEV	8	TDZE	8
------	---	------	---



CATEGORY	C	D	E
S-ILS 8*	208/24	200	(200-1/2)
S-LOC 8**	480/50	472	(500-1)
CIRCLING ***	700-2	760-2 1/2	760-2 3/4
	692 (700-2)	752 (800-2 1/2)	752 (800-2 3/4)

FAF to MAP 4.7 NM					
Knots	120	140	160	180	200
Min:Sec	2:21	2:01	1:46	1:34	1:25

HI-ILS or LOC Z RWY 8

NE-3, 20 FEB 2025 to 20 MAR 2025

NE-3, 20 FEB 2025 to 20 MAR 2025