

HI-TACAN Z RWY 8

TACAN Chan 70	LFI	APCH CRS 073°	Rwy ldg 10,002
			TDZE 8
			Arprt Elev 8

[USAF]

LANGLEY AFB (KLFJ)

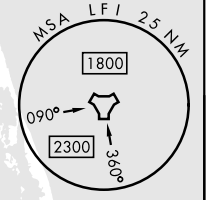
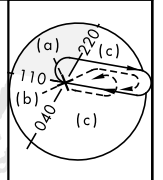
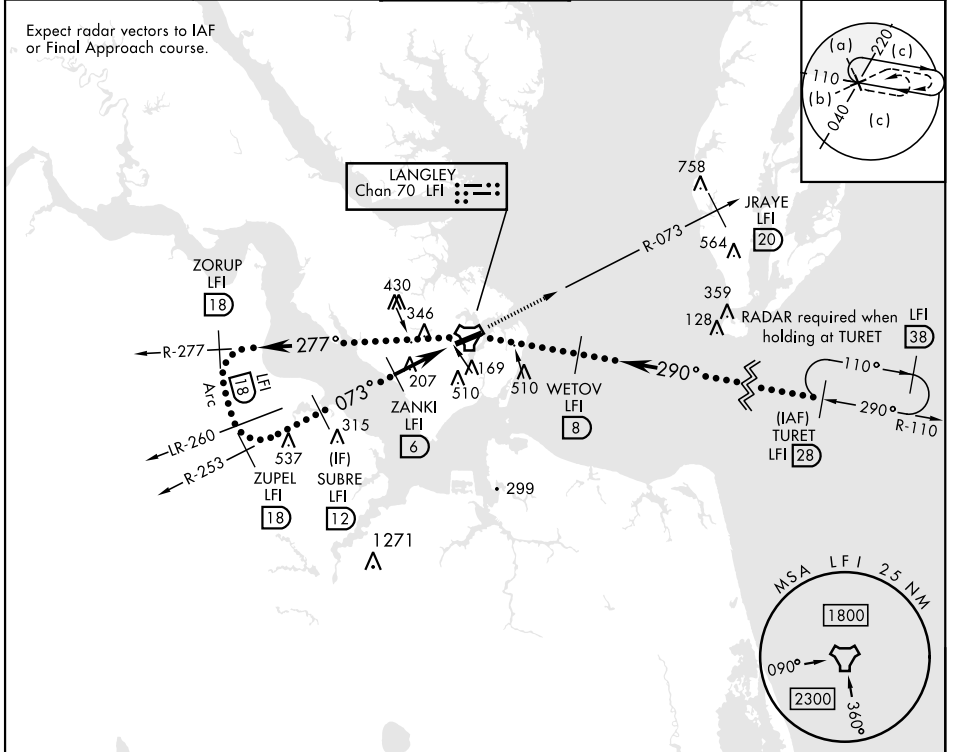
▼ * When ALS inop, increase CAT CDE vis to 1 3/8 miles.
 ** Circling S of Rwy 8-26 not authorized.



MISSED APPROACH: Climb to 3000 via LFI R-073 to 20 DME (JRAYE), then as instructed by ATC.

ATIS ★ 270.1	NORFOLK APP CON 125.7 335.625	TOWER ★ 125.0 253.5	GND CON 121.7 275.8	CLNC DEL 118.85 257.625
------------------------	---	-------------------------------	-------------------------------	-----------------------------------

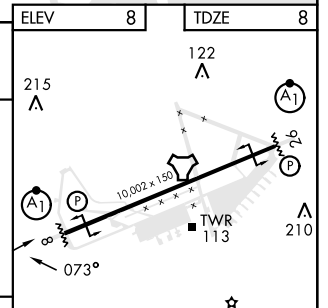
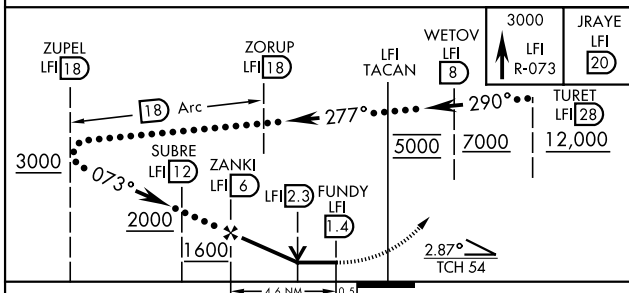
Expect radar vectors to IAF or Final Approach course.



NE-3, 20 FEB 2025 to 20 MAR 2025

NE-3, 20 FEB 2025 to 20 MAR 2025

EMERG SAFE ALT 100 NM 4100



CATEGORY	C	D	E
S-8 *	480/50	472 (500-1)	
☐ CIRCLING **	700-2 692 (700-2)	760-2 1/2 752 (800-2 1/2)	760-2 3/4 752 (800-2 3/4)

ELEV	8	TDZE	8
HIRL Rwy 8-26			

HI-TACAN Z RWY 8