

ILS or LOC Y RWY 8

LOC I-LFI 109.9	APCH CRS 078°	Rwy Ldg 10,002 TDZE Arprt Elev 8
---------------------------	-------------------------	--

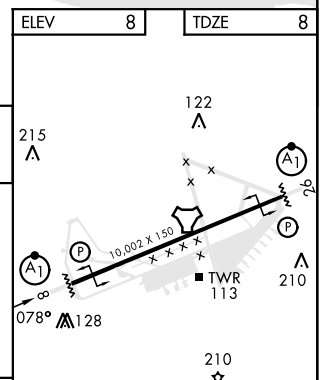
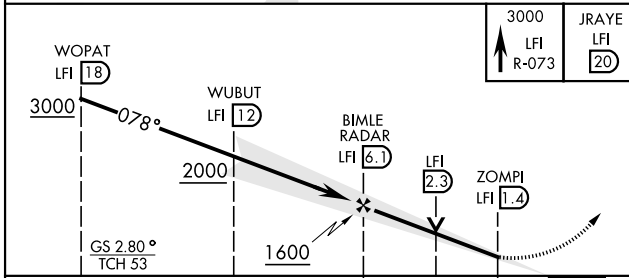
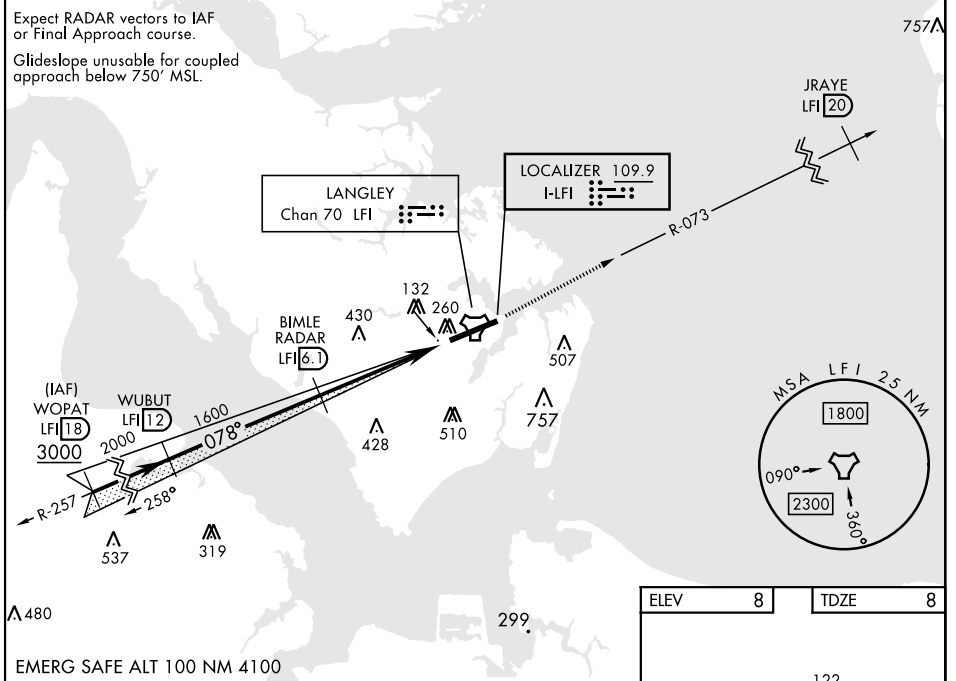
[USAF]

LANGLEY AFB (KLFJ)

RADAR or DME required		ALSF-1
<p>▼ * When ALS inop, increase RVR to 40 and vis to 3/4 mile.</p> <p>** When ALS inop, increase CAT AB RVR to 55 and vis to 1 mile, CAT CDE vis to 1 3/8 miles.</p>		MISSED APPROACH: Climb to 3000 via LFI R-073 to 20 DME (JRAYE), then as instructed by ATC.

ATIS * 270.1	NORFOLK APP CON 125.7 335.625	TOWER * 125.0 253.5	GND CON 121.7 275.8	CLNC DEL 118.85 257.625
------------------------	---	-------------------------------	-------------------------------	-----------------------------------

*** Circling not authorized S of Rwy 8-26.



CATEGORY	A		B		C		D		E	
	S-ILS 8 *		208/24		200		(200-1/2)			
S-LOC 8 **		480/24		472 (500-1/2)		480/50		472 (500-1)		
CIRCLING ***	540-1		580-1		700-2		760-2 1/2		760-2 3/4	
	532 (600-1)		572 (600-1)		692 (700-2)		752 (800-2 1/2)		752 (800-2 3/4)	

HIRL Rwy 8-26					
FAF to MAP 4.7 NM					
Knots	60	90	120	150	180
Min:Sec	4:42	3:08	2:21	1:53	1:34

ILS or LOC Y RWY 8

NE-3, 20 FEB 2025 to 20 MAR 2025

NE-3, 20 FEB 2025 to 20 MAR 2025