

HAMPTON, VIRGINIA

RNAV (GPS) RWY 26

WAAS CH 41171 W26A	APCH CRS 258°	Rwy ldg TDZE Arprt Elev	10,002 8 8
--------------------------	------------------	-------------------------------	------------------

-(USAF)

LANGLEY AFB (KLFJ)

RNP APCH

▼ * When ALS inop increase RVR to 40, vis to 3/4 mile.
 ** When ALS inop, increase RVR to 60, vis to 1 1/8 miles.

ALS-1

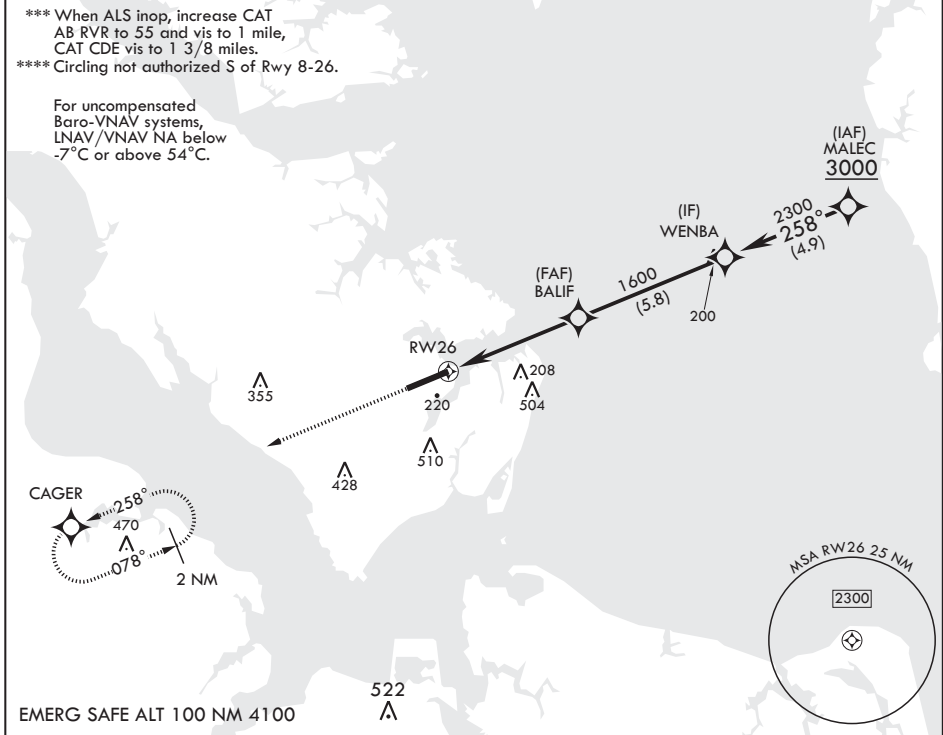


MISSED APPROACH: Climb to 3000 on course 258° to CAGER WPT and hold.

ATIS★ 270.1	NORFOLK APP CON/DEP CON 125.7 335.625	TOWER★ 125.0 253.5	GND CON 121.7 275.8	CLNC DEL 118.85 257.625
----------------	--	-----------------------	------------------------	----------------------------

*** When ALS inop, increase CAT
 AB RVR to 55 and vis to 1 mile,
 CAT CDE vis to 1 3/8 miles.
 **** Circling not authorized S of Rwy 8-26.

For uncompensated
 Baro-VNAV systems,
 LNAV/VNAV NA below
 -7°C or above 54°C.



NE-3, 20 FEB 2025 to 20 MAR 2025

NE-3, 20 FEB 2025 to 20 MAR 2025

EMERG SAFE ALT 100 NM 4100

3000 ↑ CAGER	WENBA 2300					ELEV 8	TDZE 8
RWY 26		BALIF		WENBA		2300	
1.4 NM to RWY 26		1600		GP 2.80°		TCH 57	
5.2 NM							
CATEGORY	A	B	C	D	E		
LPV DA*	208/24		200	(200-½)			
LNAV/VNAV DA**	404/35		396	(400-¾)			
LNAV MDA***	480/24	472 (500-½)	480/50	472	(500-1)		
Ⓢ CIRCLING****	540-1 532 (600-1)	580-1 572 (600-1)	700-2 692 (700-2)	760-2½ 752 (800-2½)	760-2¾ 752 (800-2¾)	HIRL all Rwys	

HAMPTON, VIRGINIA

37°05'N - 76°22'W

LANGLEY AFB (KLFJ)

Amdt 7 28DEC23

RNAV (GPS) RWY 26