

HAMPTON, VIRGINIA

RNAV (GPS) RWY 8

WAAS CH 41170 W08A	APCH CRS 078°	Rwy ldg TDZE Arprt Elev	10,002 8 8
--------------------------	------------------	-------------------------------	------------------

- (USAF)

LANGLEY AFB (KLFJ)

RNP APCH

▼ * When ALS inop, increase RVR to 40, vis to 3/4 mile.
** When ALS inop, increase vis to 1 3/8 miles.

ALSF-1



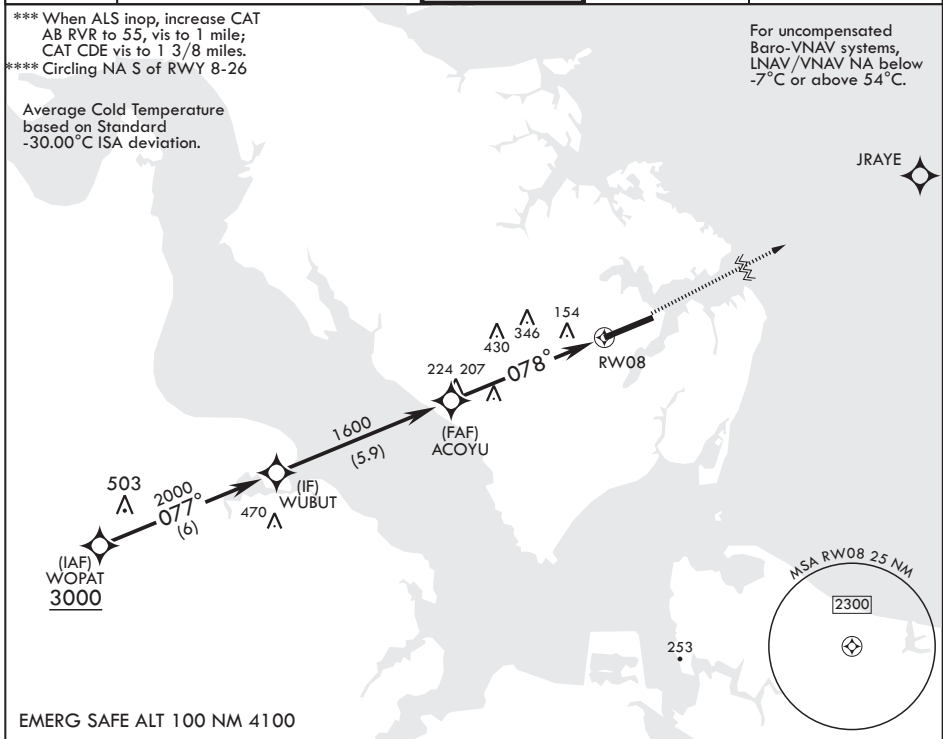
MISSED APPROACH: Climb to 3000 on course 073° to JRAYE, then as instructed by ATC.

ATIS★ 270.1	NORFOLK APP CON/DEP CON 125.7 335.625	TOWER★ 125.0 253.5	GND CON 121.7 275.8	CLNC DEL 118.85 257.625
----------------	--	-----------------------	------------------------	----------------------------

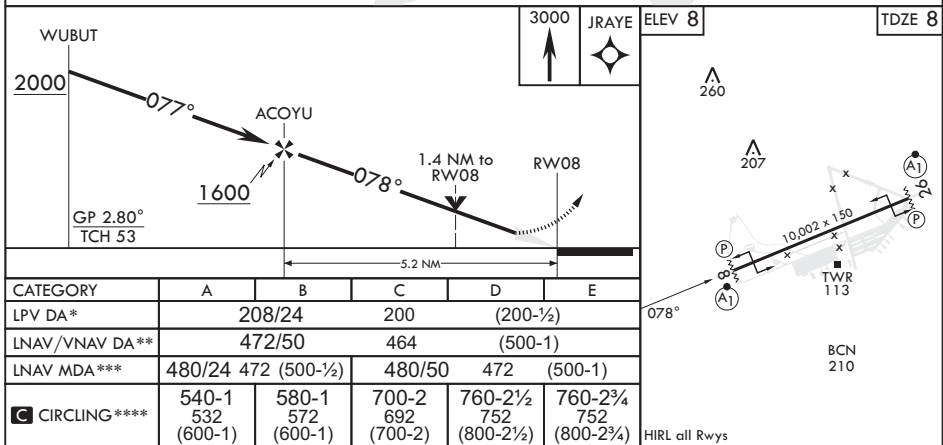
*** When ALS inop, increase CAT
AB RVR to 55, vis to 1 mile;
CAT CDE vis to 1 3/8 miles.
**** Circling NA S of RWY 8-26

For uncompensated
Baro-VNAV systems,
LNAV/VNAV NA below
-7°C or above 54°C.

Average Cold Temperature
based on Standard
-30.00°C ISA deviation.



EMERG SAFE ALT 100 NM 4100



HAMPTON, VIRGINIA

37°05'N - 76°22'W

LANGLEY AFB (KLFJ)

Amdt 1 11AUG22

RNAV (GPS) RWY 8

NE-3, 20 FEB 2025 to 20 MAR 2025

NE-3, 20 FEB 2025 to 20 MAR 2025