

TACAN Y RWY 26

TACAN LFI Chan 70	APCH CRS 263°	Rwy ldg 10,002 TDZE 8 Arprt Elev 8
--------------------------	----------------------	---

[USAF]

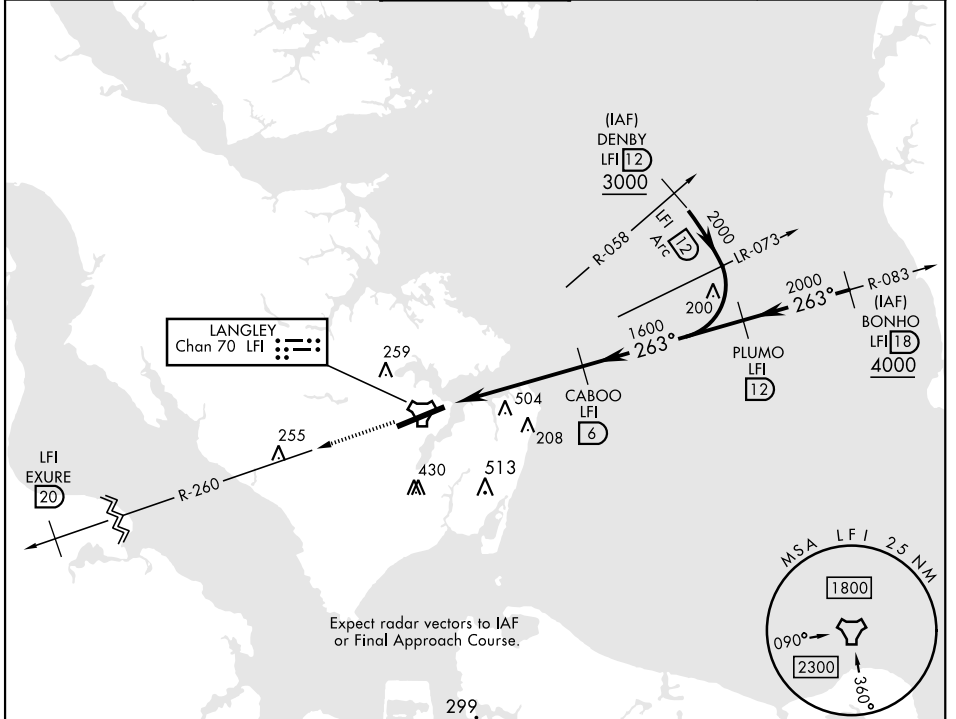
LANGLEY AFB (KLF1)

▼ *When ALS inop, increase CAT AB RVR to 55 and vis to 1 mile, CAT CDE vis to 1½ miles.
 ** Circling not authorized S of Rwy 8-26.



MISSED APPROACH: Climb to 3000 via LFI R-260 to 20 DME (EXURE), then as instructed by ATC.

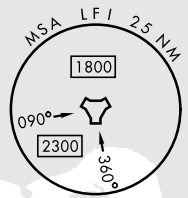
ATIS ★ 270.1	NORFOLK APP CON 125.7 335.625	TOWER ★ 125.0 253.5	GND CON 121.7 275.8	CLNC DEL 118.85 257.625
---------------------	--------------------------------------	----------------------------	----------------------------	--------------------------------



NE-3, 20 FEB 2025 to 20 MAR 2025

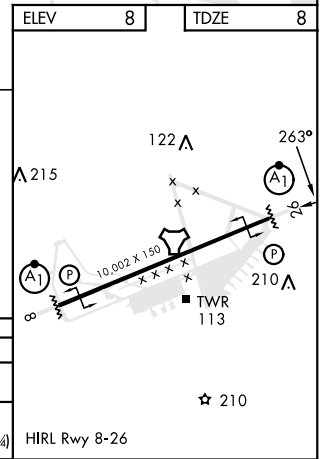
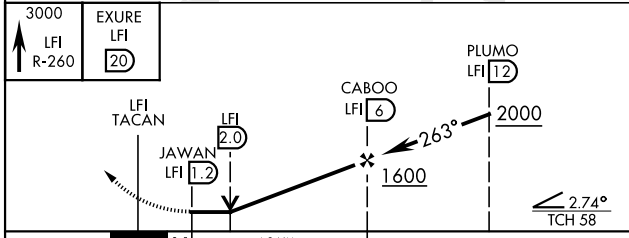
NE-3, 20 FEB 2025 to 20 MAR 2025

Expect radar vectors to IAF or Final Approach Course.



ELEV	8	TDZE	8
------	---	------	---

EMERG SAFE ALT 100 NM 4100



CATEGORY	A	B	C	D	E
S-26*	480/24 472 (500-½)		480/50 472 (500-1)		
CIRCLING**	540-1 532 (600-1)	580-1 572 (600-1)	700-2 692 (700-2)	760-2½ 752 (800-2½)	760-2¾ 752 (800-2¾)

HAMPTON, VIRGINIA 37°05'N-76°22'W LANGLEY AFB (KLF1)

Amtd 6 11AUG22

TACAN Y RWY 26