

LOC I-MDT 110.9	APP CRS 128°	Rwy Idg 8070
		TDZE 308
		Apt Elev 310

ILS or LOC RWY 13

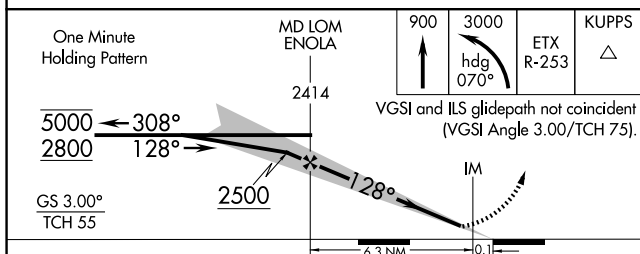
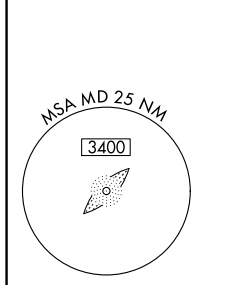
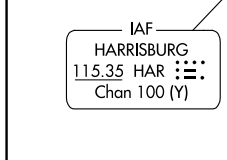
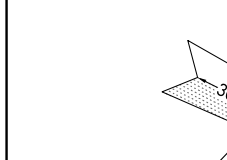
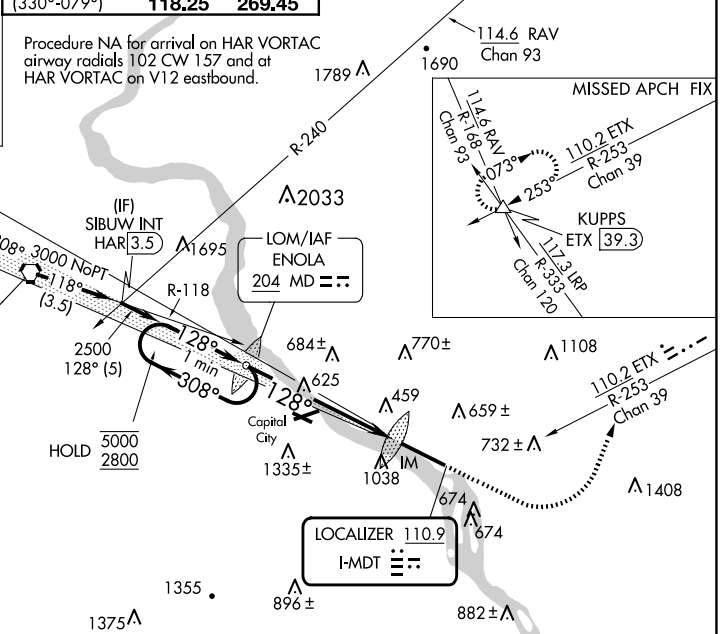
HARRISBURG INTL (MDT)

<p>Circling NA south of Rwy 13-31. -17°C</p>	<p>ALSIF-2</p>	<p>MISSED APPROACH: Climb to 900 then climbing left turn to 3000 on heading 070° and on ETX VOR/DME R-253 to KUPPS INT/ETX 39.3 DME and hold.</p>
--	----------------	---

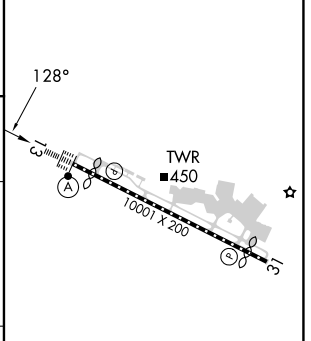
<p>ATIS 118.8</p>	<p>HARRISBURG APP CON</p> <table border="1"> <tr> <td>(080°-179°)</td> <td>126.45</td> <td>281.525</td> </tr> <tr> <td>(180°-329°)</td> <td>124.1</td> <td>273.525</td> </tr> <tr> <td>(330°-079°)</td> <td>118.25</td> <td>269.45</td> </tr> </table>	(080°-179°)	126.45	281.525	(180°-329°)	124.1	273.525	(330°-079°)	118.25	269.45	<p>HARRISBURG INTL TOWER 124.8 269.35</p>	<p>GND CON 121.7 348.6</p>
(080°-179°)	126.45	281.525										
(180°-329°)	124.1	273.525										
(330°-079°)	118.25	269.45										

ALTERNATE MISSED APCH FIX

HARRISBURG HAR 115.35
Chan 100 (Y)



ELEV 310	D	TDZE 308
----------	----------	----------



CATEGORY	A	B	C	D
S-ILS 13		508/18	200 (200-½)	
S-LOC 13	900/24	592 (600-½)	900-1¼	592 (600-1¼)
CIRCLING	900-1 590 (600-1)	980-1 670 (700-1)	1000-2 690 (700-2)	1420-3 1110 (1200-3)

TDZ/CL Rwy 13				
REIL Rwy 31				
HIRL Rwy 13-31				
FAF to MAP 6.4 NM				
Knots	60	90	120	150
Min:Sec	6:24	4:16	3:12	2:34
			2:08	

NE-4, 20 FEB 2025 to 20 MAR 2025

NE-4, 20 FEB 2025 to 20 MAR 2025