

WAAS CH <b>86313</b> <b>W13A</b>	APP CRS <b>128°</b>	Rwy Idg TDZE Apt Elev	<b>8070</b> <b>308</b> <b>310</b>
--	------------------------	-----------------------------	---

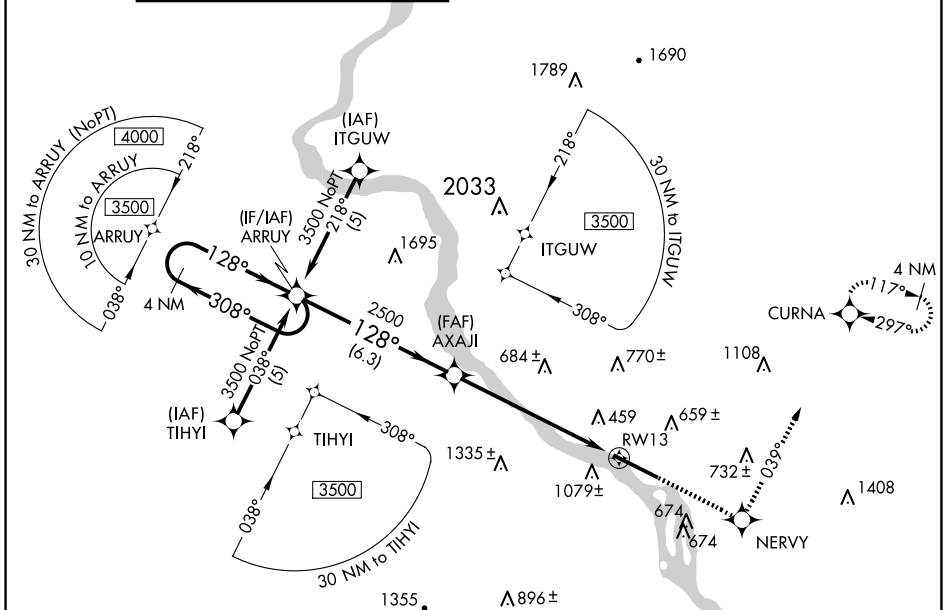
# RNAV (GPS) RWY 13

HARRISBURG INTL (MDT)

**⚠** Circling NA south of Rwy 13-31. For uncompensated Baro-VNAV systems, LNAV/VNAV NA below -1.5°C (5°F) or above 48°C (118°F). DME/DME RNP-0.3 NA. Inop table does not apply to LNAV/VNAV all Cats.

**ALSF-2**  
**(A)** MISSED APPROACH: Climb to 3500 direct NERVY and via track 039° to CURNA and hold, continue climb-in-hold to 3500.

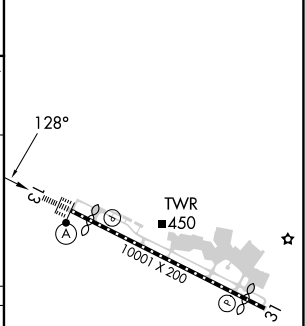
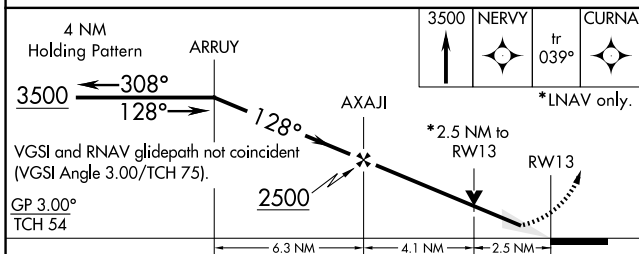
ATIS <b>118.8</b>	HARRISBURG APP CON (080°-179°) <b>126.45 281.525</b> (180°-329°) <b>124.1 273.525</b> (330°-079°) <b>118.25 269.45</b>	HARRISBURG INTL TOWER <b>124.8 269.35</b>	GND CON <b>121.7 348.6</b>
----------------------	---	--	-------------------------------



NE-4, 20 FEB 2025 to 20 MAR 2025

NE-4, 20 FEB 2025 to 20 MAR 2025

ELEV 310	<b>D</b> TDZE 308
----------	-------------------



CATEGORY	A	B	C	D
LPV DA		558/24	250 (300-1/2)	
LNAV/VNAV DA		1572-5	1264 (1300-5)	
LNAV MDA	1180/24 872 (900-1/2)	1180/40 872 (900-3/4)	1180-2 872 (900-2)	1180-2 1/4 872 (900-2 1/4)
CIRCLING	1180-1 870 (900-1)	1180-1 1/4 870 (900-1 1/4)	1180-2 1/2 870 (900-2 1/2)	1440-3 1130 (1200-3)

TDZ/CL Rwy 13  
REIL Rwy 31  
HIRL Rwy 13-31