

APP CRS	Rwy Idg	<b>4006</b>
<b>002°</b>	TDZE	<b>17</b>
	Apt Elev	<b>18</b>

# RNAV (GPS) RWY 2

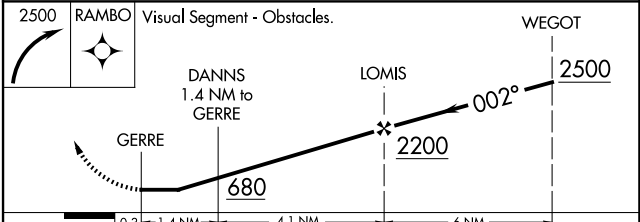
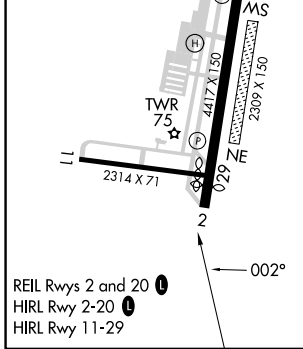
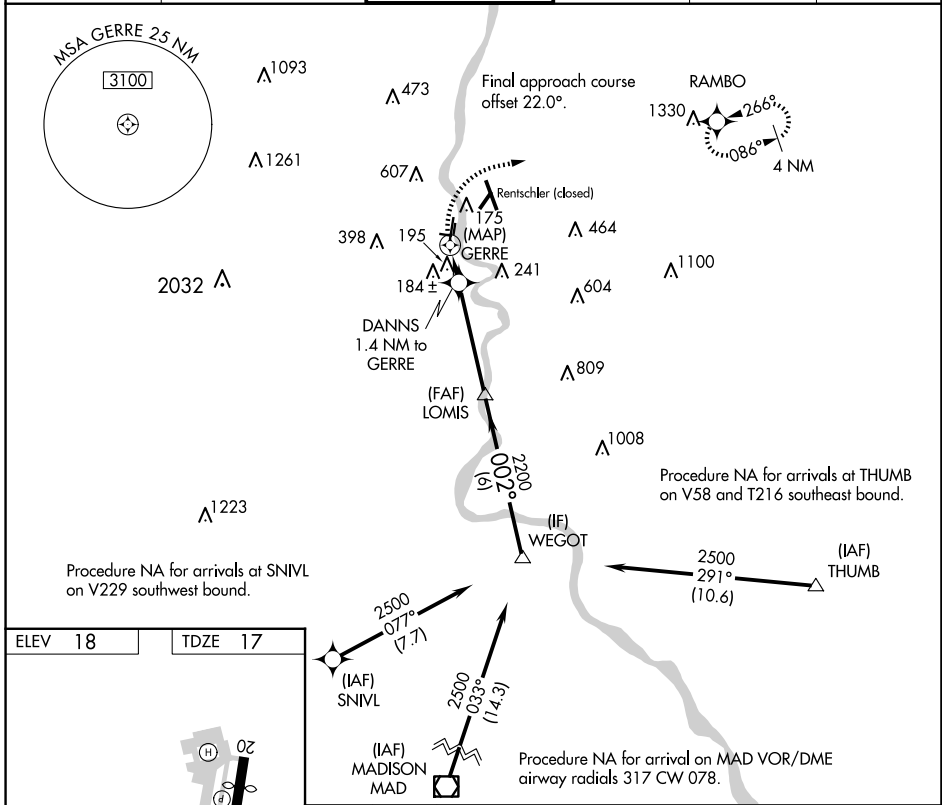
HARTFORD-BRAINARD (HF'D)

RNP APCH.

**▼** Circling NA at night. Rwy 2 helicopter visibility reduction below 1 SM NA.  
**▲** Straight-in Rwy 2 at night, operational VGSI required, remain on or above VGSI glidepath until threshold.

MISSED APPROACH: Climbing right turn to 2500 direct RAMBO and hold.

ATIS <b>126.45</b>	BRADLEY APP CON <b>127.8 269.325</b>	<b>BRAINARD TOWER *</b> <b>119.6 (CTAF) 0 248.2</b>	GND CON <b>121.6</b>	CLNC DEL <b>121.6</b>	UNICOM <b>122.95</b>
-----------------------	---	--	-------------------------	--------------------------	-------------------------



CATEGORY	A	B	C	D
LNAV MDA	460-1	443 (500-1)	460-1 <sup>3</sup> / <sub>8</sub>	443 (500-1 <sup>3</sup> / <sub>8</sub> )
CIRCLING	580-1 562 (600-1)	900-1 <sup>1</sup> / <sub>4</sub> 882 (900-1 <sup>1</sup> / <sub>4</sub> )	920-2 <sup>3</sup> / <sub>4</sub> 902 (1000-2 <sup>3</sup> / <sub>4</sub> )	920-3 902 (1000-3)

NE-1, 20 FEB 2025 to 20 MAR 2025

NE-1, 20 FEB 2025 to 20 MAR 2025