

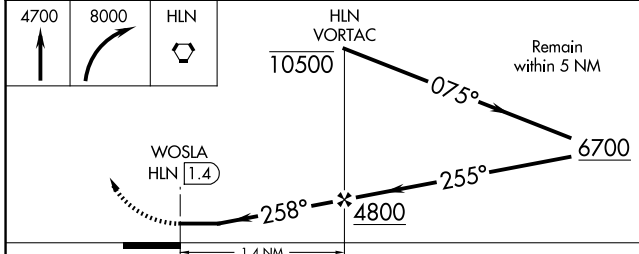
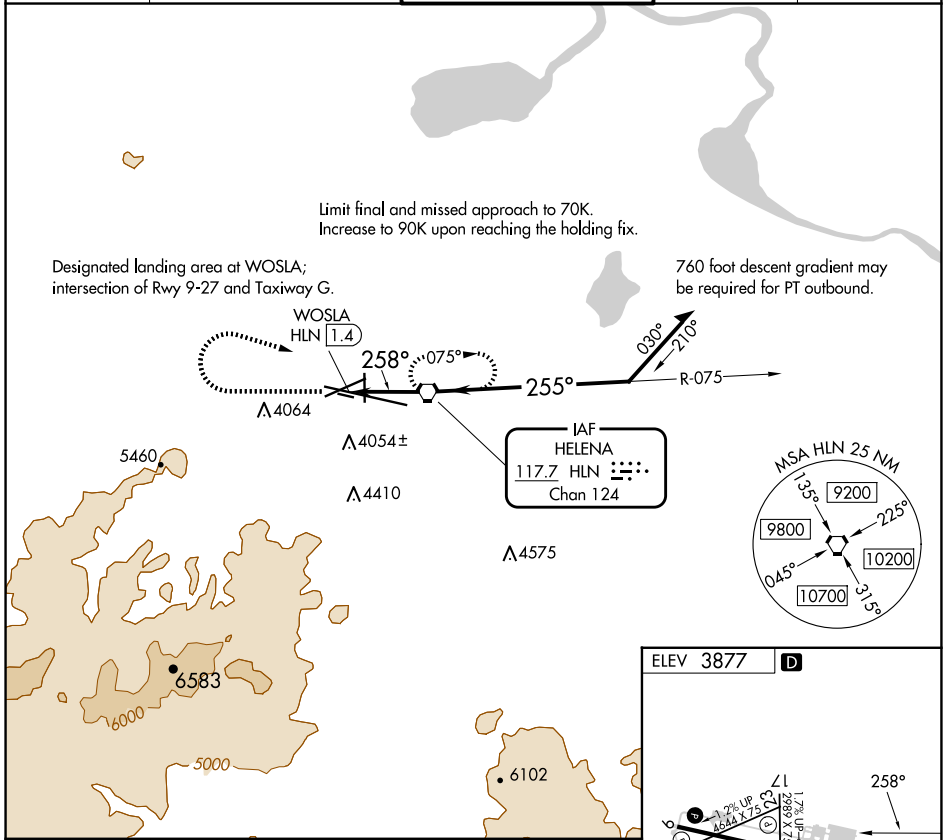
VORTAC HLN <b>117.7</b> Chan <b>124</b>	APP CRS <b>258°</b>	Rwy Idg Surface Elev <b>3846</b> Apt Elev <b>3877</b>	<b>N/A</b> <b>3846</b> <b>3877</b>
---	------------------------	---	--

# COPTER VOR 258°

HELENA RGNL (HLN)

<p>▲ NA ⚠ -17°C</p> <p>When local altimeter setting not received, procedure NA.</p>	<p>MISSED APPROACH: Climb to 4700 then climbing right turn to 8000 direct HLN VORTAC and hold, continue climb-in-hold to 8000.</p>
---	--

<p>ATIS <b>120.4</b></p>	<p>HELENA APP CON * <b>119.5 229.4</b></p>	<p>HELENA TOWER * <b>118.3 (CTAF) 257.8</b></p>	<p>GND CON <b>121.9</b></p>	<p>UNICOM <b>122.95</b></p>
------------------------------	--	---	---------------------------------	---------------------------------



ELEV 3877

REIL Rwys 9, 17, and 35

MIRL Rwys 5-23 and 17-35

HIRL Rwy 9-27

FAF to MAP 1.4 NM

Knots	45	60	75	90	105
Min:Sec	1:52	1:24	1:07	0:56	0:48

CATEGORY	COPTER		FAF to MAP 1.4 NM					
H-258	4320-1	474 (500-1)	Knots	45	60	75	90	105
			Min:Sec	1:52	1:24	1:07	0:56	0:48

NW-1, 20 FEB 2025 to 20 MAR 2025

NW-1, 20 FEB 2025 to 20 MAR 2025