

LOC	I-HLN	APP CRS	Rwy Idg TDZE	N/A
	110.1	091°	Apt Elev	3877

LOC BC-C

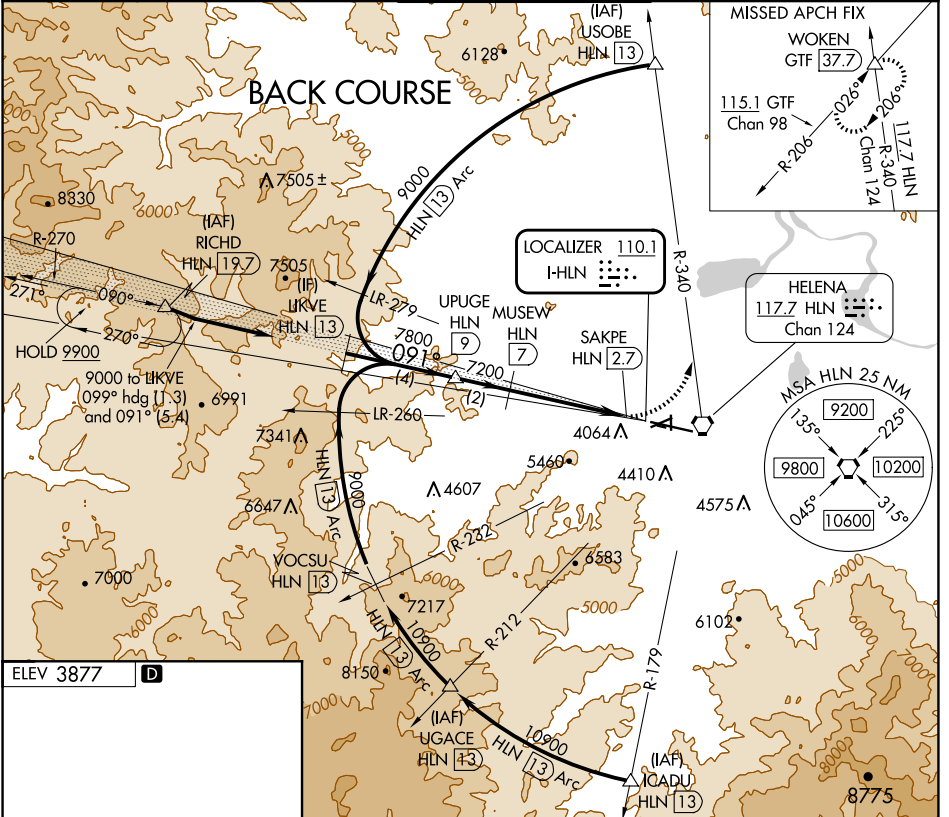
HELENA RGNL (HLN)

DME required.

⚠ Circling NA to Rwys 10 and 28. Circling Rwy 5, 23, 35 NA at night.
⚠ DME from HLN VORTAC. Simultaneous reception of I-HLN and HLN DME required. Rwy 5, 23, 35 helicopter visibility reduction below 1 SM NA.
❄ -17°C

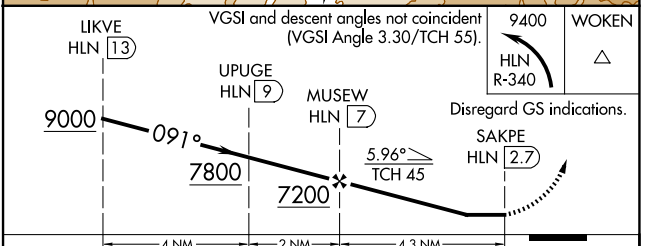
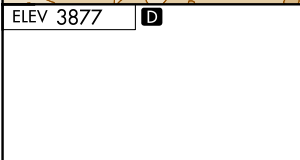
MISSED APPROACH: Climbing left turn to 9400 on HLN VORTAC R-340 to WOKEN INT/GTF 37.7 DME and hold, continue climb-in-hold to 9400.

ATIS	HELENA APP CON *	HELENA TOWER *	GND CON	UNICOM
120.4	119.5 229.4	118.3 (CTAF) 0 257.8	121.9	122.95



NW-1, 20 FEB 2025 to 20 MAR 2025

NW-1, 20 FEB 2025 to 20 MAR 2025



REIL Rws 9, 17, and 35
 MIRL Rws 5-23 and 17-35
 HIRL Rwy 9-27

CATEGORY	A	B	C	D
C CIRCLING	5140-1¼ 1263 (1300-1¼)	5140-1½ 1263 (1300-1½)	6000-3 2123 (2200-3)	NA