

APP CRS 091°	Rwy Idg TDZE Apt Elev	9000 3864 3877
------------------------	-----------------------------	---

RNAV (GPS) Y RWY 9

HELENA RGNL (HLN)

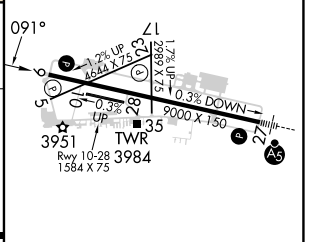
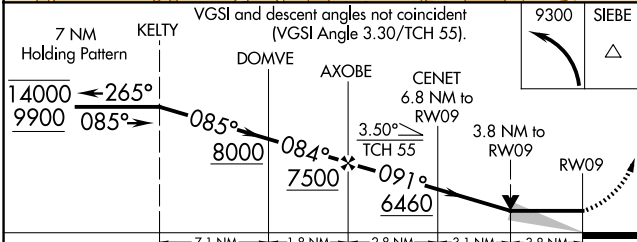
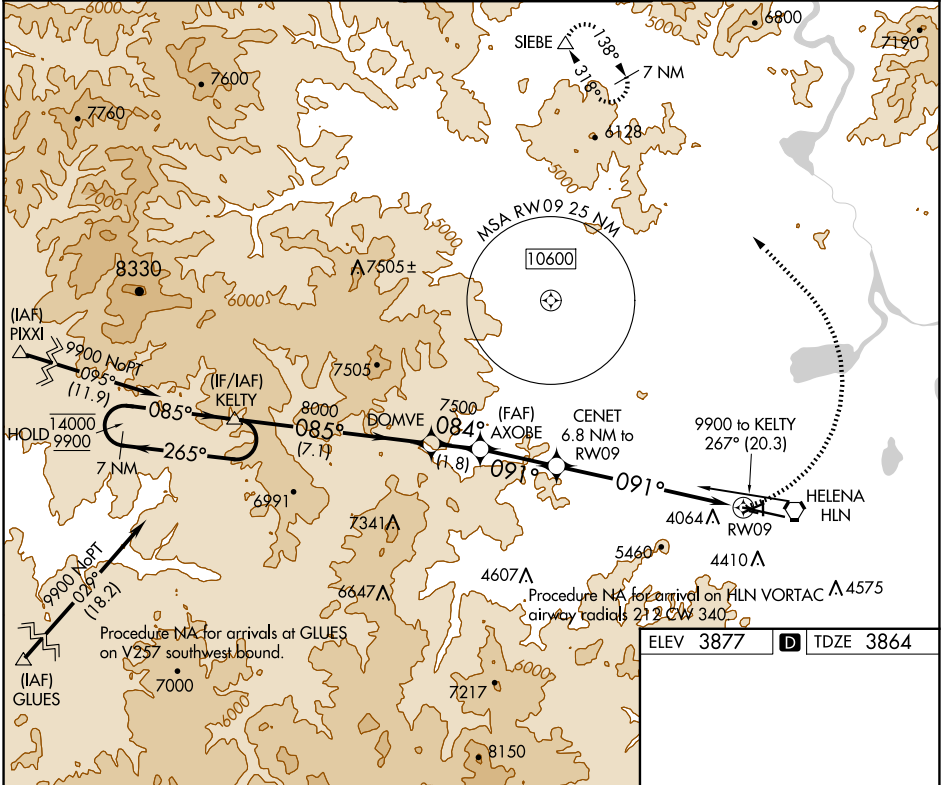
RNP APCH - GPS.

⚠ Circling NA to Rwy 10 and 28. Circling NA for Cat D south of Rwy 9-27. Circling Rwy 5, 23, 35, NA at night.

⚠ -17°C

MISSED APPROACH: Climbing left turn to 9300 direct SIEBE and hold, continue climb-in-hold to 9300.

ATIS 120.4	HELENA APP CON ★ 119.5 229.4	HELENA TOWER ★ 118.3 (CTAF) 257.8	GND CON 121.9	UNICOM 122.95
----------------------	--	---	-------------------------	-------------------------



CATEGORY	A	B	C	D
LNVA MDA	5220-1¼ 1356 (1400-1¼)	5220-1½ 1356 (1400-1½)	5220-3	1356 (1400-3)
C CIRCLING	5220-1¼ 1343 (1400-1¼)	5220-1½ 1343 (1400-1½)	6000-3	2123 (2200-3)

ELEV 3877 **D** TDZE 3864

REIL Rwy 5, 17, and 35 **Ⓛ**
MIRL Rwy 5-23 and 17-35 **Ⓛ**
HIRL Rwy 9-27 **Ⓛ**

NW-1, 20 FEB 2025 to 20 MAR 2025

NW-1, 20 FEB 2025 to 20 MAR 2025